

CITY OF DARIEN BUDGET

FISCAL YEAR ENDING 2027

May 1, 2026 – April 30, 2027

CITY OF DARIEN

FISCAL YEAR ENDING 2027

TABLE OF CONTENTS

	Page
INTRODUCTION	
Table of Contents	i
Principal Officials	1
Budget Message	2
 GENERAL FUND	
General Fund	6
General Fund Summary – <i>spreadsheet summary</i>	8
General Fund Revenue Summary	9
General Fund Revenue Budget – <i>spreadsheet summary</i>	15
Administration Budget – <i>spreadsheet summary</i>	17
Administration Budget – <i>expenditure analysis</i>	18
Mayor/City Council Budget – <i>spreadsheet summary</i>	21
Mayor/City Council Budget – <i>expenditure analysis</i>	22
DBA & Community Events Budget – <i>spreadsheet summary</i>	24
DBA & Community Events Budget – <i>expenditure analysis</i>	25
Community Development Budget – <i>spreadsheet summary</i>	27
Community Development Budget – <i>expenditure analysis</i>	28
Police Department Budget – <i>spreadsheet summary</i>	30
Police Department Budget – <i>expenditure analysis</i>	31
Municipal Services Streets/Engineering Budget – <i>spreadsheet summary</i>	34
Municipal Services Streets/Engineering Budget – <i>expenditure analysis</i>	35
Capital Projects Fund – <i>spreadsheet summary</i>	40
Capital Projects Fund – <i>expenditure analysis</i>	41
Capital Improvements Plan Guidelines	42
 ENTERPRISE FUNDS -	
Enterprise Funds	45
Enterprise Funds Summary	46
Municipal Services Water Fund Summary – <i>spreadsheet summary</i>	47
Municipal Services Water Fund Budget – <i>spreadsheet summary</i>	48
Municipal Services Water Fund Budget – <i>expenditure analysis</i>	49

SPECIAL REVENUE FUNDS –

Special Revenue Funds	53
Special Revenue Funds Summary	54
Motor Fuel Tax (MFT) Fund Budget – <i>spreadsheet summary</i>	55
Motor Fuel Tax (MFT) Fund Budget – <i>expenditure analysis</i>	56
Special Service Area #1 Fund Budget – <i>spreadsheet summary</i>	57

SUPPLEMENTAL INFORMATION –

Organizational Charts	58
Staffing Levels	61
Pay Ranges & Job Classifications.....	62
Pay Range & Step Schedule	63

CITY OF DARIEN
PRINCIPAL OFFICIALS

MAYOR

Joseph Marchese

CITY COUNCIL

Ted Schauer Ward 1
Ralph Stompanato Ward 2
Joseph Kenny Ward 3
Gerry Leganski Ward 4
Mary Sullivan Ward 5
Eric Gustafson Ward 6
Thomas Belczak Ward 7

CITY TREASURER

Mike Coren

CITY CLERK

JoAnne Ragona

CITY ADMINISTRATOR

Bryon D. Vana

STAFF

Gregory Thomas	Chief of Police
Daniel Gombac	Director of Municipal Services
Julie Saenz	Finance Director
Lisa Klemm	Admin Assistant to City Administrator

BUDGET MESSAGE
FISCAL YEAR
May 1, 2026 – April 30, 2027

CITY OF DARIEN

MEMO

TO: Mayor Marchese and City Council

FROM: Bryon D. Vana, City Administrator

DATE: March 16, 2026

SUBJECT: 2026-27 Budget Message

It is my pleasure to submit the fiscal year 2026-27 budget for the City of Darien. In summary, the budget includes no property tax increase to the City's portion of the property tax bill over the next 3 years.

A review of the City's three major funds (General, Capital Project, and Water) are as follows:

General Fund

This year's General Fund and Capital Projects Fund budgets continue many popular programs and efficiencies introduced in recent years. Highlights include:

- No increase to last year's property tax extension of \$2,519,824. In FYE 28 and FYE 29, there is also no projected property tax increase. All of the property taxes collected by the City are allocated to the police pension fund.
- A 3-month operating reserve while still transferring funds to the capital projects funds
- All current core services provided by the city including, but not limited to, tree trimming 1750 trees, residential brush pickup, enhanced snow plowing operations, snow removal from established safety sidewalks, maintenance and fertilization of the City's previous beautification projects
- Vehicle and equipment replacements as outlined in City's replacement policy
- Assistance for residential rear yard drainage improvements based on City policy
- Funds for the improvement of property maintenance enforcement and related software improvements
- Meeting funding requirements for annual employee pension obligations
- Membership and Council participation in the DuPage Mayors and Managers Conference, Metropolitan Mayors Caucus, and the Illinois Municipal League
- Provides funds to conduct three music/seasonal events, one fall fest, dancing with the Darien stars and the annual Darien Fest.
- Continuation of police department participation in intergovernmental cooperatives
- A building *Permit Fee Holiday*. The fee waiver would apply to simple permits such as fences, roofs, patios, driveways, patios and sheds.
- Includes various equipment and vehicle carryovers from FYE 26 and new replacements in accordance with the vehicle replacement plan, including the purchase of an EV truck primarily with grant money
- Replacement of 2 entranceway signs

The City's General Fund accounts for all revenues and expenditures except those required to be accounted for in another fund. This is the main operating fund in our budget and covers the City Council, Administration, Community Development, Municipal Services-Street Division and Police Departments. It is also the main source of revenue for the Capital Projects Fund. Any surplus above the General Fund 3-month reserve is transferred to the Capital Projects Fund for neighborhood and public improvements. The various budget funds expenses are separated into two categories:

1. **Maintenance Budget**-The Maintenance Budget includes no new programs, no new employees and no new activities. It reflects only the anticipated cost to continue current essential activities, programs and carryover items approved but not completed in the previous fiscal year.
2. **Discretionary Budget**-Discretionary Budget expenditures relate to City services and employee items that would be reduced first if budget adjustments were necessary; however, they are important in maintaining the level of citizen services and employee expenses that have been provided in previous years.

The General Fund expenses do not fluctuate greatly from year to year. Primary changes stem from vehicle and equipment replacements and employee expenses. The majority of the General Fund expenses come from the Police Department (60%) and the Municipal Services Department (23%).

Capital Projects Fund

The Capital Projects Fund includes the items included in the City's Capital Improvement Plan (CIP). This is a multi-year plan identifying capital projects to be funded or identified during the 3-year planning period. These CIP guidelines identify each capital project to be undertaken, the year the improvement project will be started, the amount of funds expected to be expended in each year of the CIP, and the way the expenditure will be funded. The City's Capital Projects Fund is used to plan for the City's maintenance and construction of larger infrastructure, excluding the water system, which is accounted for in the Water Fund. Primary expenditures include road maintenance, storm water maintenance, beautification projects, and larger rights-of-way maintenance projects. The City Council adopted a CAPITAL IMPROVEMENTS PLAN GUIDELINE that provides the City Council with guidelines when planning and funding capital projects. All the Guidelines have been met in accordance with the guidelines.

Capital Projects Fund Highlights includes:

- A road maintenance program of approximately 5.2 miles, allows for additional road base repair as needed and curb and gutter replacement
- A \$500,000 reserve balance for emergencies or economic development incentives as directed by the council.
- Revenues sufficient to continue capital projects over the three-year budget period including an annual transfer from the general fund
- Concrete and road crack sealing maintenance
- Increased the annual sidewalk replacement program to include concrete milling to reduce sidewalk mis-matches
- Following the *capital improvement guidelines* approved by the council in 2012

Water Fund

Governmental water operations are established as enterprise funds. An enterprise fund is established to account for operations that are financed and operated in a manner similar to private business enterprises. The intent of the governing body is that the costs (operating and capital improvement expenses, including depreciation) of providing water to the public on a continuing basis be financed or recovered primarily through user charges. The definition of an enterprise fund implies that sufficient user fees should be established to ensure that the utility could operate on a self-sustaining basis. The major source of revenue for the water fund is user fees. Determining a *fair* user fee is a factor of two issues:

- analyzing our operating expenses, projecting system capital projects, determining sufficient cash reserves, and setting aside funds to replace portions of the system as needed
- analyzing the number of gallons of water billed to all customers in order to determine the rate that covers the expenses mentioned above

The staff conducts this determination of a fair user fee every year when preparing the draft budget for City Council consideration. The last increase to the city's water rates occurred in 2025. The staff is not recommending a water rate increase as part of the FYE 27 water fund budget. However, any major emergency repair or approval of any new capital projects would require additional adjustments to the rate structure. Approximately 70% of the water fund expenses are for the direct purchase of Lake Michigan water from the DuPage Water Commission (DWC).

Water Fund highlights include:

- Truck and equipment replacement following the City's vehicle replacement policy.
- Continuing to add items that help reduce water loss in the system
- Trench box and shoring plates to improve employee safety
- Maintenance projects planned for various water plants
- \$200,000 per year over the next 3 years to repair and replace water mains

Darien has over \$20,000,000 of capital assets in the water system. The system is made up of water distribution, water storage and buildings/equipment. There are approximately 140 miles of water mains that bring customers over 815,000,000 gallons of safe and fresh water. The system includes three water towers that provide emergency water storage and keep the water pressure at required levels. The city also has vehicles and equipment needed to maintain the system, especially during emergency water main breaks. The city continually reinvests in the water system including the recent improvement to installing an automated meter reading system.

Several other funds are routine and involve smaller expenditures including Motor Fuel Tax (MFT) and Special Service Area 1.

If you have any questions regarding this year's budget document, please feel free to contact me.

A thank you to all the elected officials, staff and residents that play a critical role in the budget process.

CITY OF DARIEN

GENERAL FUND BUDGET FISCAL YEAR May 1, 2026 – April 30, 2027

**GENERAL FUND BUDGET SUMMARY
GENERAL FUND REVENUE SUMMARY
GENERAL FUND REVENUE BUDGET
ADMINISTRATION BUDGET
MAYOR/CITY COUNCIL BUDGET
DBA AND COMMUNITY EVENTS
COMMUNITY DEVELOPMENT BUDGET
POLICE BUDGET
MUNICIPAL SERVICES - STREETS BUDGET
CAPITAL PROJECTS FUND BUDGET
DEBT SERVICE FUND**

GENERAL FUND

The General Fund accounts for all revenues and expenditures which are not accounted for in other funds. This is the largest fund of the City, providing for the majority of the City's revenues, expenditures and services. The General Fund is supported predominately with taxes, licenses and fees. It funds the operations of the City's Police Department, Municipal Services Department - Community Development and Streets Divisions, Mayor/City Council, Administration, and DBA/Community Events.

ADMINISTRATION - The Administration Department provides overall management and support for City operations, including the City Administrator's office, the finance division, the City Clerk's office, and the citizen service division.

MAYOR/CITY COUNCIL - This Department includes support for the operations of the City Council and the Mayor's offices.

DBA/COMMUNITY EVENTS - The DBA/Community Events Department provides oversight of local business engagement and business outreach including special event management for community events including concerts, Darien Fest and Oktoberfest.

POLICE - The Police Department is the largest Department in the City. The Department is the City's law enforcement agency, providing traffic control and enforcement, crime prevention services, patrol, investigation, records and short-term incarceration.

MUNICIPAL SERVICES - COMMUNITY DEVELOPMENT DIVISION - The Community Development division of the Municipal Services Department includes all functions related to the planning and development of the community, including building and development review, building inspection, code enforcement, comprehensive planning, and economic development.

MUNICIPAL SERVICES - STREETS DIVISION - The Street division is responsible for maintenance and repairs to the City's streets, storm sewers, catch basins and street lights; as well as plowing snow, mowing the rights-of-way, and maintaining and repairing the City's fleet of vehicles and equipment.

City of Darien

3/5/2026

GENERAL FUND SUMMARY FYE 27

ACCOUNT	FYE 25 ACTUAL	FYE 26 BUDGET	FYE 26 EST ACT	FYE 27 BUD REQ	DEPT MAINT BUDGET REQUEST	COUNCIL DISCRETIONARY EXPENDITURES	FYE 28 FORCAST	FYE 29 FORCAST
GENERAL FUND REVENUE	\$ 20,566,393	\$ 18,292,407	\$ 19,824,353	\$ 19,440,650	\$ 19,290,650	\$ 150,000	\$ 19,384,833	\$ 19,440,319
Sale of Capital Assets	\$ -	\$ -	\$ -	\$ -	\$ -	\$ -	\$ -	\$ -
TOTAL REVENUE	\$ 20,566,393	\$ 18,292,407	\$ 19,824,353	\$ 19,440,650	\$ 19,290,650	\$ 150,000	\$ 19,384,833	\$ 19,440,319
DEPT. EXPENDITURES								
Administration	\$ 1,460,290	\$ 1,606,359	\$ 1,734,670	\$ 2,065,684	\$ 1,944,842	\$ 120,842	\$ 2,006,795	\$ 2,066,680
City Council	\$ 79,120	\$ 90,821	\$ 80,371	\$ 94,246	\$ 55,021	\$ 39,225	\$ 95,246	\$ 95,746
Bus Alliance/Comm Events	\$ 33,055	\$ 184,910	\$ 184,618	\$ 208,724	\$ 106,607	\$ 102,117	\$ 191,347	\$ 186,445
Community Development	\$ 1,219,471	\$ 1,207,476	\$ 1,294,662	\$ 1,099,918	\$ 1,058,718	\$ 41,200	\$ 1,083,902	\$ 1,108,897
Police	\$ 10,499,522	\$ 10,852,368	\$ 10,561,910	\$ 11,412,204	\$ 11,133,214	\$ 278,990	\$ 11,981,373	\$ 12,793,599
PW - Streets	\$ 3,728,749	\$ 4,179,934	\$ 3,460,346	\$ 3,935,751	\$ 3,182,266	\$ 753,485	\$ 2,921,890	\$ 3,173,417
Water Fund Reimb	\$ (350,000)							
TOTAL EXPENDITURES	\$ 16,670,207	\$ 18,121,868	\$ 17,316,577	\$ 18,816,527	\$ 17,480,668	\$ 1,335,859	\$ 18,280,553	\$ 19,424,784
FISCAL YEAR BAL	\$ 3,896,186	\$ 170,539	\$ 2,507,776	\$ 624,123	N/A	N/A	\$ 1,104,280	\$ 15,535
BEGINNING FUND BAL	\$ 8,480,224	\$ 7,056,227	\$ 8,549,986	\$ 6,607,762	N/A	N/A	\$ 4,581,885	\$ 4,886,165
ENDING FUND BAL	\$ 12,376,410	\$ 7,226,766	\$ 11,057,762	\$ 7,231,885	N/A	N/A	\$ 5,686,165	\$ 4,901,700
Transfer to Capital Fund	\$ 3,500,000	\$ 2,750,000	\$ 4,450,000	\$ 2,650,000	N/A	N/A	\$ 800,000	\$ 600,000
ENDING FUND BAL	\$ 8,549,986	\$ 4,476,766	\$ 6,607,762	\$ 4,581,885	N/A	N/A	\$ 4,886,165	\$ 4,301,700

**FY 26-27 BUDGET
GENERAL FUND REVENUE SUMMARY**

TAXES

Real Estate Taxes

Description: General Fund share of property taxes collected from real property in City.

Basis of Projection: Amount determined by the City when tax levy was approved and any additional abatement approved by the City Council.

Road & Bridge Taxes

Description: City share of County's taxes collected inside City.

Basis of Projection: Estimate based on current year estimated actual.

Gasoline Tax

Description: 2 cents (\$0.02) added to each gallon of gas sold from Darien Gas stations.

Basis of Projection: Estimate based on current year estimated actual.

Food and Beverage Tax

Description: 1.25% added on food and beverages (alcoholic and non-alcoholic), which can be consumed on the premises where purchased.

Basis of Projection: Estimate based on current year estimated actual.

State Income Tax

Description: City's share (based on population) of State's Income Tax Collections distributed to municipalities.

Basis of Projection: Budget reflects State funding formula estimates.

Local Use Tax

Description: City's share (based on population) of the additional revenue from state use tax receipts collected on personal property from out of state retailers.

Basis of Projection: Reflects State funding formula estimates formula.

Sales Tax

Description: 1.00% of retail sales within the City. Also, an additional 1.25% Home Rule Sales Tax on applicable goods.

Basis of Projection: Estimated to reflect sales tax allocated to the General Fund based on previous year estimates and current economic climate.

Municipal Utility Tax

Description: 5.0% charge on natural gas and electric bills in City.

Basis of Projection: Projections based on historical average receipts.

Amusement Tax

Description: 3% tax on gross receipts from all amusement activities in the City.

Basis of Projection: Projected to equal current year-end estimated revenue.

Hotel/Motel Tax

Description: 5% tax imposed on the business of renting rooms in a Hotel/Motel

Basis of Projection: Projected based on previous average year's revenue.

Video Gaming Tax

Description: City share of video gaming tax collected within the city.

Basis of Projection: Projected based on previous average year's revenue.

Cannabis Use Tax

Description: City share of state tax distributed to municipalities imposed on the business of cultivating or selling Cannabis throughout the state.

Basis of Projection: Projected based on previous average year's revenue.

LICENSES

Business Licenses

Description: Fee levied on retail and commercial businesses in City.

Basis of Projection: Projected to equal current year-end estimated revenue.

Liquor Licenses

Description: Fee levied on all businesses engaged in sale of alcoholic beverages.

Basis of Projection: Based on current year-end estimated revenue.

Contractor Licenses

Description: Fee levied on all contractors who operate or do work in the City.

Basis of Projection: Projected based on previous year's revenue

FINES/FEES/PERMITS

Court Fines

Description: Fines levied by Court for violations of City traffic ordinances.

Basis of Projection: Projected based on previous year's revenue

Towing Fees

Description: An administrative fee collected when a vehicle has to be towed and impounded due to the arrest or detention of the owner or driver for violation of a local law or ordinance.

Basis of Projection: Projected based on previous year's revenue

Ordinance Fines

Description: Fines levied by Court for violations of City codes and ordinances, other than Traffic Code.

Basis of Projection: Projected based on previous average year's revenue

Building Permit Fees

Description: Fee, based on value, for new and remodeling construction projects in City.

Basis of Projection: Estimated conservative and reduced from last year's estimated actual budget.

Municipal Telecommunications Tax

Description: 6.0% of gross revenues of telecommunication retailers. This revenue is collected by the state and distributed to communities based on local ordinances.

Basis of Projection: Projections based on historical average receipts.

Nicor Franchise Fee

Description: Value of franchise-required free gas service to municipal facilities. Amount of free gas based on population. Value determined by floating average of natural gas prices.

Basis of Projection: Projections estimated to reflect current year estimated actual.

Cable TV Franchise Fee

Description: 5% on gross receipts of cable company operations in City plus a 1% PEG fee for cable broadcast improvements.

Basis of Projection: Based on current year-end estimated revenue.

Public Hearing Fees (Reimbursements)

Description: Reimbursement for costs of conducting public hearings.

Basis of Projection: Projected at last year's budget amount.

Elevator Inspection Fees

Description: Reimbursement for semi-annual inspection of elevators in City.

Basis of Projection: Projected at last year's budget amount

Public Improvement Permit Fee

Description: Fee charged for inspection of any work done by private contractor on municipal property.

Basis of Projection: Expect about the same for next year.

Engineering/Professional Fees (Reimbursements)

Legal Fees (Reimbursements)

Description: Reimbursement for City's out-of-pocket costs for engineering and legal reviews and projects requiring professional service contracts.

Basis of Projections: Estimate equals approximate amount budgeted for reimbursable expenditures.

Police Special Service

Description: Reimbursement for special services provided by Police Department such as school liaison officer, traffic control, and additional details requested by banks.

Basis of Projection: Based on current year-end estimated revenue and estimated future demand.

D.U.I Technology

Description: Portion of fines received for D.U.I. convictions.

Basis of Projection: Based on current year-end estimated revenue.

Stormwater Management/Review Fees

Description: Reimbursement for stormwater management engineering fees – out-of-pocket costs of City.

Basis of Projections: Based on last year's budget.

Developer Contributions/Impact Fees

Description: \$125/housing unit development and impact fee.

Basis of Projection: Estimate minimal revenue.

OTHER INCOME

Water Fund Share

Description: Fee paid by Water Fund to General Fund to offset administrative costs incurred by General Fund. Examples of cost include staff time, computer use, accounting and payroll services and other support activities.

Basis of Projection: Amount equal to previous year's contribution with updates for current estimated expenses.

Interest

Description: Interest earnings on General Fund revenues.

Basis of Projection: Based on estimated interest rates and available cash for investments.

Police Reports/Prints

Description: Charges for copies of reports and documents and for fingerprinting requests.

Basis of Projection: Based on last year's budget estimated actual.

Rents

Description: Rent from City properties.

Basis of Projection: Rent revenue from telecommunication leases on City properties.

Other Reimbursements

Description: Reimbursements for expenditures not otherwise identified. Includes insurance reimbursements, payments for damage to City property, etc.

Basis of Projection: Based on last year's budget estimated actual.

Sale of Equipment

Description: Revenue from sale of City equipment – vehicles, trucks, etc.

Basis of Projection: No anticipated sales.

Miscellaneous

Description: Unanticipated receipts, one-time receipts, small revenues not otherwise shown.

Basis of Projection: Projection based on historic receipts.

Grants

Description: State and Federal grants

Basis of Projection: No grants identified in the General Fund budget. The City will apply for grants during the year, which will revise this estimate if the grants are authorized.

**GENERAL FUND REVENUE BUDGET
FISCAL YEAR ENDING 2027**

ACCOUNT	FYE 25 ACTUAL	FYE 26 BUDGET	FYE 26 ESTIMATED ACTUAL	FYE 27 REQUEST	DEPT MAINT BUDGET REQUEST	COUNCIL DISCRETIONARY EXPENDITURES	FYE 28 FORECAST	FYE 29 FORECAST
TAXES								
Real Estate Tax	\$ 2,509,234	\$ 2,511,961	\$ 2,519,824	\$ 2,513,053	\$ 2,513,053	\$ -	\$ 2,513,053	\$ 2,513,053
Road & Bridge Tax	\$ 271,852	\$ 220,000	\$ 281,041	\$ 271,852	\$ 271,852	\$ -	\$ 271,852	\$ 271,852
Local Gasoline Tax	\$ 220,890	\$ 213,970	\$ 213,784	\$ 215,922	\$ 215,922	\$ -	\$ 218,081	\$ 220,262
Food & Beverage Tax	\$ 749,754	\$ 737,765	\$ 728,018	\$ 735,298	\$ 735,298	\$ -	\$ 742,651	\$ 750,078
State Income Tax	\$ 3,825,609	\$ 3,191,595	\$ 3,797,903	\$ 3,801,925	\$ 3,801,925	\$ -	\$ 3,801,925	\$ 3,801,925
Local Use Tax	\$ 573,378	\$ 782,396	\$ 132,066	\$ 134,612	\$ 134,612	\$ -	\$ 134,612	\$ 134,612
Sales Tax	\$ 7,811,750	\$ 7,141,480	\$ 8,060,216	\$ 8,060,216	\$ 8,060,216	\$ -	\$ 8,221,420	\$ 8,303,635
Video Gaming Tax	\$ 365,366	\$ 326,378	\$ 389,412	\$ 369,942	\$ 369,942	\$ -	\$ 373,641	\$ 377,378
Replacement Tax	\$ 10,804	\$ 4,693	\$ 8,938	\$ 7,150	\$ 7,150	\$ -	\$ 7,150	\$ 7,150
Municipal Utility Tax	\$ 1,061,760	\$ 832,962	\$ 1,013,000	\$ 1,013,000	\$ 1,013,000	\$ -	\$ 1,013,000	\$ 1,013,000
Amusement Tax	\$ 97,781	\$ 77,098	\$ 76,707	\$ 76,236	\$ 76,236	\$ -	\$ 80,830	\$ 80,830
Hotel / Motel Tax	\$ 74,394	\$ 67,722	\$ 75,120	\$ 70,608	\$ 70,608	\$ -	\$ 70,608	\$ 70,608
Cannabis Use Tax	\$ 36,791	\$ 32,448	\$ 33,096	\$ 33,039	\$ 33,039	\$ -	\$ 33,039	\$ 33,039
SUBTOTAL	\$ 17,609,363	\$ 16,140,468	\$ 17,329,125	\$ 17,302,853	\$ 17,302,853	\$ -	\$ 17,481,863	\$ 17,577,421
LICENSES								
Business Licenses	\$ 73,818	\$ 35,000	\$ 32,000	\$ 35,000	\$ 35,000	\$ -	\$ 35,000	\$ 35,000
Liquor Licenses	\$ 78,200	\$ 80,150	\$ 75,950	\$ 75,900	\$ 75,900	\$ -	\$ 75,900	\$ 75,900
Contractor Licenses	\$ 14,460	\$ 13,000	\$ 13,110	\$ 13,000	\$ 13,000	\$ -	\$ 13,000	\$ 13,000
SUBTOTAL	\$ 166,478	\$ 128,150	\$ 121,060	\$ 123,900	\$ 123,900	\$ -	\$ 123,900	\$ 123,900
FINES, FEES, PERMITS								
Court Fines	\$ 120,951	\$ 120,000	\$ 121,137	\$ 120,000	\$ 120,000	\$ -	\$ 120,000	\$ 120,000
Towing Fees	\$ 61,400	\$ 50,400	\$ 47,600	\$ 38,080	\$ 38,080	\$ -	\$ 38,080	\$ 38,080
Ordinance Fines	\$ 24,368	\$ 16,000	\$ 69,119	\$ 69,119	\$ 69,119	\$ -	\$ 20,000	\$ 20,000
Building Permit Fees	\$ 104,337	\$ 35,000	\$ 109,000	\$ 35,000	\$ 35,000	\$ -	\$ 35,000	\$ 35,000
Telecommunications / Excise Tax	\$ 227,085	\$ 200,000	\$ 179,411	\$ 200,000	\$ 200,000	\$ -	\$ 200,000	\$ 200,000
Cable TV Franchise	\$ 348,122	\$ 341,800	\$ 315,837	\$ 269,100	\$ 269,100	\$ -	\$ 234,200	\$ 203,900
Peg Fees - AT&T	\$ 4,920	\$ 3,000	\$ 3,700	\$ 3,000	\$ 3,000	\$ -	\$ 3,000	\$ 3,000
Nicor Franchise Fee	\$ 48,426	\$ 33,000	\$ 39,000	\$ 39,000	\$ 39,000	\$ -	\$ 39,000	\$ 39,000
Public Hearing Fees	\$ 8,930	\$ 2,000	\$ 2,715	\$ 2,000	\$ 2,000	\$ -	\$ 2,000	\$ 2,000
Elevator Inspections	\$ 5,790	\$ 3,500	\$ 3,485	\$ 3,500	\$ 3,500	\$ -	\$ 3,500	\$ 3,500
Public Improvement Permit	\$ -	\$ -	\$ -	\$ -	\$ -	\$ -	\$ -	\$ -
Engineering/Professional Fees (Reimb)	\$ 158,963	\$ 99,500	\$ 130,585	\$ 99,500	\$ 99,500	\$ -	\$ 104,500	\$ 104,500
Legal Fee (Reimb)	\$ 620	\$ -	\$ -	\$ -	\$ -	\$ -	\$ -	\$ -
Police Special Service	\$ 132,777	\$ 114,606	\$ 163,466	\$ 114,606	\$ 114,606	\$ -	\$ 116,399	\$ 118,226
DUI Technology	\$ 14,553	\$ 3,500	\$ 10,519	\$ 3,500	\$ 3,500	\$ -	\$ 3,500	\$ 3,500
Stormwater Management Fees	\$ -	\$ -	\$ -	\$ -	\$ -	\$ -	\$ -	\$ -
Inspection / Tap On / Permits	\$ 1,225	\$ -	\$ -	\$ -	\$ -	\$ -	\$ -	\$ -
Developer Contribution	\$ -	\$ -	\$ -	\$ -	\$ -	\$ -	\$ -	\$ -
E-Citation Fees	\$ 2,214	\$ -	\$ -	\$ -	\$ -	\$ -	\$ -	\$ -
NSF Check Fees	\$ 105	\$ -	\$ -	\$ -	\$ -	\$ -	\$ -	\$ -
SUBTOTAL	\$ 1,264,786	\$ 1,022,306	\$ 1,195,574	\$ 996,405	\$ 996,405	\$ -	\$ 919,179	\$ 890,706
OTHER INCOME								
Water Fund Share	\$ 250,000	\$ 350,000	\$ 350,000	\$ 350,000	\$ 350,000	\$ -	\$ 350,000	\$ 350,000
Transfer From Other Funds	\$ -	\$ -	\$ -	\$ -	\$ -	\$ -	\$ -	\$ -
Reimbursements - Workman's Comp	\$ 113,323	\$ -	\$ 56,202	\$ -	\$ -	\$ -	\$ -	\$ -
Interest Income	\$ 200,134	\$ 185,000	\$ 125,000	\$ 105,600	\$ 105,600	\$ -	\$ 98,000	\$ 86,400

Lease Interest Income	\$ 74,586	\$ -	\$ -	\$ -	\$ -	\$ -	\$ -	\$ -
Drug Forfeiture Receipts	\$ 99	\$ -	\$ -	\$ -	\$ -	\$ -	\$ -	\$ -
Police Reports & Prints	\$ 4,040	\$ 5,000	\$ 3,175	\$ 5,000	\$ 5,000	\$ -	\$ 5,000	\$ 5,000
Impact Fee Revenue	\$ 125	\$ -	\$ -	\$ -	\$ -	\$ -	\$ -	\$ -
Grants	\$ 22,491	\$ 100,000	\$ 105,405	\$ 150,000	\$ -	\$ 150,000	\$ -	\$ -
Rents	\$ 218,644	\$ 223,483	\$ 234,141	\$ 234,141	\$ 234,141	\$ -	\$ 234,141	\$ 234,141
Mailbox Replacement	\$ 3,659	\$ -	\$ 2,455	\$ -	\$ -	\$ -	\$ -	\$ -
Other Reimbursements	\$ 150,727	\$ 50,000	\$ 110,000	\$ 50,000	\$ 50,000	\$ -	\$ 50,000	\$ 50,000
Reimbursements - Rear Yard	\$ 18,637	\$ -	\$ 16,300	\$ -	\$ -	\$ -	\$ -	\$ -
Residential Concrete Reimbursements	\$ 12,336	\$ -	\$ 16,330	\$ -	\$ -	\$ -	\$ -	\$ -
Sale of Equipment	\$ 167,350	\$ 5,000	\$ 39,552	\$ 5,000	\$ 5,000	\$ -	\$ 5,000	\$ 5,000
Sale of Wood Chips	\$ 3,620	\$ 3,000	\$ 3,125	\$ 3,000	\$ 3,000	\$ -	\$ 3,000	\$ 3,000
Miscellaneous Revenue	\$ 273,829	\$ 20,000	\$ 12,612	\$ 20,000	\$ 20,000	\$ -	\$ 20,000	\$ 20,000
Community Events & DBA Activities	\$ 12,166	\$ 60,000	\$ 104,296	\$ 94,750	\$ 94,750	\$ -	\$ 94,750	\$ 94,750
SUBTOTAL	\$ 1,525,766	\$ 1,001,483	\$ 1,178,594	\$ 1,017,491	\$ 867,491	\$ 150,000	\$ 859,891	\$ 848,291
TOTAL REVENUES	\$ 20,566,393	\$ 18,292,407	\$ 19,824,353	\$ 19,440,650	\$ 19,290,650	\$ 150,000	\$ 19,384,833	\$ 19,440,319

City of Darien

3/6/2026

ADMINISTRATION DEPARTMENT BUDGET FISCAL YEAR 2027

ACCOUNT	FYE 25 ACTUAL	FYE 26 BUDGET	FYE 26 ESTIMATED ACTUAL	FYE 27 REQUEST	DEPT MAINT BUDGET REQUEST	COUNCIL DISCRETIONARY EXPENDITURES	FYE 28 FORECAST	FYE 29 FORECAST
PERSONNEL								
Salaries	\$ 430,599	\$ 479,503	\$ 533,597	\$ 571,856	\$ 571,856	\$ -	\$ 586,152	\$ 600,806
Overtime	\$ 1,692	\$ -	\$ 5,000	\$ -	\$ -	\$ -	\$ -	\$ -
SUB-TOTAL	\$ 432,291	\$ 479,503	\$ 538,597	\$ 571,856	\$ 571,856	\$ -	\$ 586,152	\$ 600,806
BENEFITS								
Social Security	\$ 25,562	\$ 29,729	\$ 33,393	\$ 35,455	\$ 35,455	\$ -	\$ 36,341	\$ 37,250
Medicare	\$ 5,978	\$ 6,953	\$ 7,810	\$ 8,292	\$ 8,292	\$ -	\$ 8,499	\$ 8,712
IMRF	\$ 26,402	\$ 31,455	\$ 32,283	\$ 33,220	\$ 33,220	\$ -	\$ 34,050	\$ 34,901
Medical / Life Insurance	\$ 69,136	\$ 76,337	\$ 76,337	\$ 76,337	\$ 76,337	\$ -	\$ 78,246	\$ 80,202
Supplemental Pension	\$ 4,984	\$ 4,800	\$ 4,800	\$ 6,000	\$ 6,000	\$ -	\$ 6,000	\$ 6,000
SUB-TOTAL	\$ 132,062	\$ 149,274	\$ 154,623	\$ 159,304	\$ 159,304	\$ -	\$ 163,136	\$ 167,065
OPERATING COSTS								
Dues & Subscriptions	\$ 1,824	\$ 2,181	\$ 2,600	\$ 2,342	\$ -	\$ 2,342	\$ 2,362	\$ 2,362
Liability Insurance	\$ 251,773	\$ 309,540	\$ 415,000	\$ 587,106	\$ 587,106	\$ -	\$ 598,796	\$ 611,070
Legal Notices	\$ 1,903	\$ 2,500	\$ 2,000	\$ 2,500	\$ 2,500	\$ -	\$ 2,800	\$ 2,800
Maintenance - Equipment	\$ 9,452	\$ 10,850	\$ 10,000	\$ 11,700	\$ 11,700	\$ -	\$ 12,240	\$ 12,840
Maintenance - Vehicles	\$ 1,433	\$ 2,000	\$ 1,600	\$ 2,000	\$ 2,000	\$ -	\$ 1,500	\$ 1,500
Postage & Mailings	\$ 3,216	\$ 3,350	\$ 3,200	\$ 3,350	\$ 3,350	\$ -	\$ 3,350	\$ 3,350
Printing & Forms	\$ 4,024	\$ 4,500	\$ 3,500	\$ 4,500	\$ 4,500	\$ -	\$ 4,500	\$ 4,500
Public Relations	\$ 104,275	\$ 79,700	\$ 72,700	\$ 72,700	\$ -	\$ 72,700	\$ 74,700	\$ 76,700
Rent - Equipment	\$ 1,638	\$ 3,040	\$ 1,800	\$ 3,040	\$ 3,040	\$ -	\$ 3,040	\$ 3,040
Supplies - Office	\$ 9,136	\$ 8,000	\$ 9,500	\$ 9,500	\$ 9,500	\$ -	\$ 9,500	\$ 9,500
Supplies - Other	\$ -	\$ 500	\$ 100	\$ 500	\$ 500	\$ -	\$ 500	\$ 500
Training & Education	\$ -	\$ 1,500	\$ 250	\$ 1,500	\$ -	\$ 1,500	\$ 1,500	\$ 1,500
Travel & Meetings	\$ 104	\$ 550	\$ 300	\$ 550	\$ -	\$ 550	\$ 550	\$ 550
Telephone	\$ 30,673	\$ 43,600	\$ 30,000	\$ 37,500	\$ 37,500	\$ -	\$ 37,800	\$ 37,800
Utilities	\$ 3,536	\$ 4,500	\$ 3,000	\$ 4,500	\$ 4,500	\$ -	\$ 4,500	\$ 4,500
Vehicle Gas & Oil	\$ 1,883	\$ 1,500	\$ 1,800	\$ 1,500	\$ 1,500	\$ -	\$ 1,500	\$ 1,500
Other	\$ 900	\$ -	\$ -	\$ -	\$ -	\$ -	\$ -	\$ -
SUB-TOTAL	\$ 425,770	\$ 477,811	\$ 557,350	\$ 744,788	\$ 667,696	\$ 77,092	\$ 759,138	\$ 774,012
CONTRACTUAL SERVICES								
Audit	\$ 16,075	\$ 19,000	\$ 18,600	\$ 19,000	\$ 19,000	\$ -	\$ 19,500	\$ 20,000
Consulting / Prof Servs	\$ 428,401	\$ 439,671	\$ 430,000	\$ 518,737	\$ 495,987	\$ 22,750	\$ 429,929	\$ 452,624
Contingency	\$ 1,267	\$ 10,000	\$ 10,000	\$ 10,000	\$ -	\$ 10,000	\$ 10,000	\$ 10,000
Janitorial Service	\$ 24,424	\$ 26,100	\$ 25,000	\$ 31,000	\$ 31,000	\$ -	\$ 33,940	\$ 37,174
SUB-TOTAL	\$ 470,167	\$ 494,771	\$ 483,600	\$ 578,737	\$ 545,987	\$ 32,750	\$ 493,369	\$ 519,798
CAPITAL								
Building Improvements	\$ -	\$ -	\$ -	\$ -	\$ -	\$ -	\$ -	\$ -
Equipment	\$ -	\$ 5,000	\$ 500	\$ 11,000	\$ -	\$ 11,000	\$ 5,000	\$ 5,000
SUB-TOTAL	\$ -	\$ 5,000	\$ 500	\$ 11,000	\$ -	\$ 11,000	\$ 5,000	\$ 5,000
TOTAL EXPENDITURES	\$ 1,460,290	\$ 1,606,359	\$ 1,734,670	\$ 2,065,684	\$ 1,944,842	\$ 120,842	\$ 2,006,795	\$ 2,066,680

2027 BUDGET SUMMARY

	SALARIES	571,856	-
	BENEFITS	159,304	-
	OPERATING COSTS	667,696	77,092
	CONTRACTUAL	545,987	32,750
	CAPITAL	-	11,000
	TOTAL	<u>1,944,842</u>	<u>120,842</u>

Account #	Description	Department Maintenance Budget Request	City Council Discretionary Expenditures
SALARIES			
10-4010	SALARIES - 5 Full time, 1 Part time	571,856	-
10-4030	OVERTIME	-	-
BENEFITS			
10-4110	SOCIAL SECURITY	35,455	-
10-4111	MEDICARE	8,292	-
10-4115	IMRF	33,220	-
10-4120	MEDICAL/LIFE INSURANCE	76,337	-
10-4135	SUPPLEMENTAL PENSION	6,000	-
OPERATING			
10-4213	DUES & SUBSCRIPTIONS	-	2,342
	Books/Publications	-	1,112
	ILGFOA Members	-	350
	Notaries	-	150
	IPELRA	-	230
	GFOA	-	500
	Total	-	2,342
10-4219	LIABILITY INSURANCE	587,106	-
	Liability Insurance	552,106	-
	Deductible	10,000	-
	Legal Services	25,000	-
	Total	587,106	-
10-4221	LEGAL NOTICES	2,500	-
10-4225	MAINTENANCE - EQUIPMENT	11,700	-
	Equipment Maintenance	1,000	-
	Abila Maintenance/Software	9,700	-
	Copier Maintenance	1,000	-
	Total	11,700	-
10-4229	MAINTENANCE - VEHICLES	2,000	-
	Maintenance / Repairs	2,000	-
	Total	2,000	-
10-4233	POSTAGE/MAILINGS	3,350	-
	Regular Postage	2,500	-
	Meter Permit/Supplies	450	-
	FedEx/UPS	400	-
	Total	3,350	-
10-4235	PRINTING & FORMS	4,500	-
	Checks	2,420	-
	W-2's & Tax Forms	400	-
	Business License	600	-
	Handicap Stickers	200	-
	Letterhead/Envelopes/Cards	880	-
	Total	4,500	-

10-4239	PUBLIC RELATIONS			-		72,700
	Citizen of the Year			-	8,100	
	Monthly Retainer - Communications			-	36,600	
	Newsletter 2-4 issues @ 4 pages			-	28,000	
				-	72,700	
10-4243	RENT - EQUIPMENT			3,040		-
	Postage Meter			2,040	-	
	Other			1,000	-	
		Total		3,040	-	
10-4253	SUPPLIES - OFFICE			9,500		-
10-4257	SUPPLIE - OTHER			500		-
	Meeting Supplies			500	-	
		Total		500	-	
10-4263	TRAINING & EDUCATION			-		1,500
	Local Training			-	1,500	
		Total		-	1,500	
10-4265	TRAVEL/MEETINGS			-		550
	Association Meetings			-	250	
	Mileage - Staff			-	300	
		Total		-	550	
10-4267	TELEPHONE			37,500		-
	Verizon			13,000	-	
	Equipment Replacement			2,500	-	
	Comcast PW/City Hall			6,600	-	
	Comcast - SIP Svce (voice over internet)			5,900	-	
	Peerless (CallOne)			4,000	-	
	IP Communications			5,500	-	
		Total		37,500	-	
10-4271	UTILITIES - GAS/ELECTRIC/SEWER			4,500		-
10-4273	VEHICLE (Gas & Oil)			1,500		-
	Gasoline/Oil/Fluids			1,500	-	
		Total		1,500	-	
CONTRACTUAL SERVICES						
10-4320	AUDIT - GENERAL FUND			19,000		-
10-4325	CONSULTING/PROFESSIONAL SERVICES			495,987		22,750
	Computer Support			135,594	-	
	Computers and Parts			134,153	-	
	Code Internet Link			750	-	
	Web Site Maintenance			6,360	-	
	Web Site Maint - Text Messaging			3,600	-	
	Web Site Internet Link			2,000	-	
	Web Site Updates (if needed)			-	5,000	
	Consulting City Administrator			198,850	-	
	Annual disclosure filing			1,500	-	
	CJIS software maintenance			4,680	-	
	LRS elec recycle event - FYE27			-	9,750	
	Bank Fees - Service Charge			8,500	-	
	Update City Videos (FYE27 Strategic)			-	8,000	
	Future Resident Web Page (FYE28 Strategic)			-	-	
	Advertise - Attract new res (FYE28 Strategic)			-	-	
		Total		495,987	22,750	
10-4330	CONTINGENCY			-		10,000

10-4345	JANITORIAL SERVICES				31,000		-
	Janitorial Contract			29,400		-	
	Window Cleaning			600		-	
	Misc Cleaning			1,000		-	
			Total	31,000		-	
CAPITAL							
10-4810	BUILDING IMPROVEMENTS				-		-
10-4815	EQUIPMENT				-		11,000
	Cable Room Maintenance			-		5,000	
	Color Printer			-		6,000	
			Total	-		11,000	
				Total	1,944,842		120,842

City of Darien

3/6/2026

CITY COUNCIL BUDGET FISCAL YEAR 2027

ACCOUNT	FYE 25 ACTUAL	FYE 26 BUDGET	FYE 26 ESTIMATED ACTUAL	FYE 27 REQUEST	DEPT MAINT BUDGET REQUEST	COUNCIL DISCRETIONARY EXPENDITURES	FYE 28 FORECAST	FYE 29 FORECAST
PERSONNEL								
Salaries	\$ 42,750	\$ 42,750	\$ 42,750	\$ 42,750	\$ 42,750	\$ -	\$ 42,750	\$ 42,750
SUB-TOTAL	\$ 42,750	\$ 42,750	\$ 42,750	\$ 42,750	\$ 42,750	\$ -	\$ 42,750	\$ 42,750
BENEFITS								
Social Security	\$ 2,651	\$ 2,651	\$ 2,651	\$ 2,651	\$ 2,651	\$ -	\$ 2,651	\$ 2,651
Medicare	\$ 620	\$ 620	\$ 620	\$ 620	\$ 620	\$ -	\$ 620	\$ 620
SUB-TOTAL	\$ 3,271	\$ 3,271	\$ 3,271	\$ 3,271	\$ 3,271	\$ -	\$ 3,271	\$ 3,271
OPERATING COSTS								
Boards and Commissions	\$ 568	\$ 2,000	\$ 1,200	\$ 2,075	\$ 1,000	\$ 1,075	\$ 1,575	\$ 1,575
Cable Operations	\$ 5,195	\$ 7,200	\$ 6,600	\$ 8,400	\$ -	\$ 8,400	\$ 8,400	\$ 8,400
Dues and Subscriptions	\$ 23,181	\$ 27,350	\$ 21,000	\$ 27,350	\$ -	\$ 27,350	\$ 28,850	\$ 29,350
Liability Insurance	\$ -	\$ -	\$ -	\$ -	\$ -	\$ -	\$ -	\$ -
Public Relations	\$ 270	\$ 1,700	\$ 1,000	\$ 1,700	\$ -	\$ 1,700	\$ 1,700	\$ 1,700
Training and Education	\$ -	\$ 3,500	\$ 1,000	\$ 700	\$ -	\$ 700	\$ 700	\$ 700
Travel / Meetings	\$ 35	\$ 50	\$ 50	\$ 4,500	\$ 4,500	\$ -	\$ 4,500	\$ 4,500
SUB-TOTAL	\$ 29,249	\$ 41,800	\$ 30,850	\$ 44,725	\$ 5,500	\$ 39,225	\$ 45,725	\$ 46,225
CONTRACTUAL SERVICES								
Consulting / Prof Servs	\$ 3,850	\$ 3,000	\$ 3,500	\$ 3,500	\$ 3,500	\$ -	\$ 3,500	\$ 3,500
Trolley Contracts	\$ -	\$ -	\$ -	\$ -	\$ -	\$ -	\$ -	\$ -
SUB-TOTAL	\$ 3,850	\$ 3,000	\$ 3,500	\$ 3,500	\$ 3,500	\$ -	\$ 3,500	\$ 3,500
CAPITAL								
Equipment	\$ -	\$ -	\$ -	\$ -	\$ -	\$ -	\$ -	\$ -
SUB-TOTAL	\$ -	\$ -	\$ -	\$ -	\$ -	\$ -	\$ -	\$ -
TOTAL EXPENDITURES	\$ 79,120	\$ 90,821	\$ 80,371	\$ 94,246	\$ 55,021	\$ 39,225	\$ 95,246	\$ 95,746

2027 BUDGET SUMMARY

	Maintenance	Discretionary
SALARIES	42,750	-
BENEFITS	3,271	-
OPERATING COSTS	5,500	39,225
CONTRACTUAL	3,500	-
CAPITAL	-	-
TOTAL	<u>55,021</u>	<u>39,225</u>

Account #	Description	Department Maintenance Budget Request	City Council Discretionary Expenditures
SALARIES			
12-4010	SALARIES	42,750	-
BENEFITS			
12-4110	SOCIAL SECURITY	2,651	-
12-4111	MEDICARE	620	-
OPERATING			
12-4205	BOARDS AND COMMISSIONS	1,000	1,075
	Finger Printing - Liq Lic	1,000	-
	Holiday Decorating Contest	-	575
	Halloween Decorating Contest	-	500
	Total	1,000	1,075
12-4206	CABLE OPERATIONS	-	8,400
	Video & Tech Services Const	-	8,400
	Total	-	8,400
12-4213	DUES & SUBSCRIPTIONS	-	27,350
	IL municipal clerks assoc	-	100
	Illinois Municipal League Membership	-	1,750
	DMMC events and meetings	-	4,500
	DMMC Dues	-	20,000
	Metro Mayors Caucus	-	1,000
	Total	-	27,350
12-4219	LIABILITY INSURANCE	-	-
	Total	-	-
12-4239	PUBLIC RELATIONS	-	1,700
	Heart of Darien Award	-	1,200
	Pins, pens, misc	-	500
	Total	-	1,700

12-4263	TRAINING & EDUCATION			-		700	700
				-		700	
			Total	-		700	
12-4265	TRAVEL/MEETINGS			4,500		-	-
	attend municipal functions			4,500		-	
			Total	4,500		-	
CONTRACTUAL SERVICES							
12-4325	CONSULTING/PROF SERVICES			3,500		-	-
	Code Supplements			3,500		-	
			Total	3,500		-	
CAPITAL							
12-4815	EQUIPMENT			-		-	-
			Total	-		-	
						-	
					55,021		39,225

City of Darien

3/6/2026

DBA AND COMMUNITY EVENTS FISCAL YEAR 2027

ACCOUNT	FYE 25 ACTUAL	FYE 26 BUDGET	FYE 26 ESTIMATED ACTUAL	FYE 27 REQUEST	DEPT MAINT BUDGET REQUEST	COUNCIL DISCRETIONARY EXPENDITURES	FYE 28 FORECAST	FYE 29 FORECAST
PERSONNEL								
1 Full Time	\$ 23,207	\$ 80,000	\$ 80,000	\$ 87,050	\$ 87,050	\$ -	\$ 90,413	\$ 92,350
Overtime	\$ -	\$ -	\$ -	\$ -	\$ -	\$ -	\$ -	\$ -
SUB-TOTAL	\$ 23,207	\$ 80,000	\$ 80,000	\$ 87,050	\$ 87,050	\$ -	\$ 90,413	\$ 92,350
BENEFITS								
Social Security	\$ 1,230	\$ 5,580	\$ 4,960	\$ 5,397	\$ 5,397	\$ -	\$ 5,500	\$ 5,800
Medicare	\$ 288	\$ 1,305	\$ 1,160	\$ 1,216	\$ 1,216	\$ -	\$ 1,416	\$ 1,496
IMRF	\$ 1,333	\$ 3,375	\$ 5,248	\$ 6,094	\$ 6,094	\$ -	\$ 6,200	\$ 6,500
Medical / Life Insurance	\$ 1,505	\$ 6,000	\$ 6,000	\$ 6,000	\$ 6,000	\$ -	\$ 6,500	\$ 6,500
Supplemental Pension	\$ -	\$ 1,200	\$ -	\$ -	\$ -	\$ -	\$ -	\$ -
SUB-TOTAL	\$ 4,356	\$ 17,460	\$ 17,368	\$ 18,707	\$ 18,707	\$ -	\$ 19,616	\$ 20,296
OPERATING COSTS								
Dues & Subscriptions	\$ 3,284	\$ 2,400	\$ 2,400	\$ 3,700	\$ -	\$ 3,700	\$ 3,810	\$ 3,925
Postage & Mailings	\$ -	\$ 200	\$ 200	\$ 200	\$ 200	\$ -	\$ 200	\$ 200
Printing & Forms	\$ -	\$ 250	\$ 250	\$ 250	\$ 250	\$ -	\$ 250	\$ 250
Public Relations	\$ 2,184	\$ 63,700	\$ 63,700	\$ 92,917	\$ -	\$ 92,917	\$ 56,158	\$ 58,524
Supplies - Office	\$ -	\$ 300	\$ 100	\$ 300	\$ 300	\$ -	\$ 300	\$ 300
Supplies - Other	\$ -	\$ 100	\$ 100	\$ 100	\$ 100	\$ -	\$ 100	\$ 100
Travel / Meetings	\$ 24	\$ 500	\$ 500	\$ 500	\$ -	\$ 500	\$ 500	\$ 500
SUB-TOTAL	\$ 5,492	\$ 67,450	\$ 67,250	\$ 97,967	\$ 850	\$ 97,117	\$ 61,318	\$ 63,799
CONTRACTUAL SERVICES								
Consulting / Prof Servs	\$ -	\$ -	\$ -	\$ -	\$ -	\$ -	\$ 10,000	\$ -
Contingency	\$ -	\$ 20,000	\$ 20,000	\$ 5,000	\$ -	\$ 5,000	\$ 5,000	\$ 5,000
SUB-TOTAL	\$ -	\$ 20,000	\$ 20,000	\$ 5,000	\$ -	\$ 5,000	\$ 15,000	\$ 5,000
CAPTIAL								
Equipment	\$ -	\$ -	\$ -	\$ -	\$ -	\$ -	\$ 5,000	\$ 5,000
SUB-TOTAL	\$ -	\$ -	\$ -	\$ -	\$ -	\$ -	\$ 5,000	\$ 5,000
TOTAL EXPENDITURES	\$ 33,055	\$ 184,910	\$ 184,618	\$ 208,724	\$ 106,607	\$ 102,117	\$ 191,347	\$ 186,445

2027 BUDGET SUMMARY

	Maintenance	Discretionary
SALARIES	87,050	-
BENEFITS	18,707	-
OPERATING COSTS	850	97,117
CONTRACTUAL	-	5,000
CAPITAL	-	-
TOTAL	<u>106,607</u>	<u>102,117</u>

Account #	Description	Department Maintenance Budget Request	City Council Discretionary Expenditures
SALARIES			
15-4010	SALARIES	87,050	-
	1 Full Time	87,050	
	total	87,050	
15-4030	OVERTIME	-	-
BENEFITS			
15-4110	SOCIAL SECURITY	5,397	-
15-4111	MEDICARE	1,216	-
15-4115	IMRF	6,094	-
15-4120	MEDICAL/LIFE INSURANCE	6,000	-
15-4135	SUPPLEMENTAL PENSION	-	-
OPERATING			
15-4213	DUES & SUBSCRIPTIONS	-	3,700
	Chamber Master	-	3,500
	West Suburban Chamber	-	200
	Total	-	3,700
15-4233	POSTAGE/MAILINGS	200	-
	Regular Postage	200	-
	Total	200	-
15-4235	PRINTING & FORMS	250	-
	Printing	250	-
	Total	250	-
15-4239	PUBLIC RELATIONS	-	92,917
	Darien Dash	-	8,175
	October Fest	-	8,705
	Darien Fest	-	45,962
	Tree lighting	-	1,000
	4th of July Parade	-	400
	Concerts	-	21,675
	Dancing with Darien Starz	-	4,000
	Chamber Member Events	-	3,000
	Total	-	92,917
15-4253	SUPPLIES - OFFICE	300	-
	Supplies	300	-
	Total	300	-
15-4257	SUPPLIES - OTHER	100	-

	Supplies			<u>100</u>		<u>-</u>	
			Total	100		-	
15-4265	TRAVEL/MEETINGS				-		500
	Association Meetings				-	300	
	Mileage - Staff				-	<u>200</u>	
			Total		-	500	
	CONTRACTUAL SERVICES						
15-4325	CONSULTING/PROF SERVICES				-		-
	Advertising Business Comm (strategic) FYE28				-	-	
			Total		-	-	
15-4330	CONTINGENCY				-		5,000
	CAPITAL						
15-4815	EQUIPMENT				-		-
	Equipment (FYE28 & FYE29)						
			Total		-	-	
						-	
						<u>106,607</u>	<u>102,117</u>

City of Darien

3/6/2026

COMMUNITY DEVELOPMENT DEPARTMENT BUDGET FISCAL YEAR 2027

ACCOUNT	FYE 25 ACTUAL	FYE 26 BUDGET	FYE 26 ESTIMATED ACTUAL	FYE 27 REQUEST	DEPT MAINT BUDGET REQUEST	COUNCIL DISCRETIONARY EXPENDITURES	FYE 28 FORECAST	FYE 29 FORECAST
PERSONNEL								
Salaries	\$ 366,462	\$ 371,380	\$ 386,227	\$ 384,463	\$ 384,463	\$ -	\$ 394,074	\$ 403,926
Overtime	\$ -	\$ 1,000	\$ 1,000	\$ 1,000	\$ 1,000	\$ -	\$ 1,000	\$ 1,000
SUB-TOTAL	\$ 366,462	\$ 372,380	\$ 387,227	\$ 385,463	\$ 385,463	\$ -	\$ 395,074	\$ 404,926
BENEFITS								
Social Security	\$ 21,078	\$ 21,742	\$ 23,946	\$ 23,093	\$ 23,093	\$ -	\$ 23,670	\$ 24,262
Medicare	\$ 5,168	\$ 5,385	\$ 5,600	\$ 5,575	\$ 5,575	\$ -	\$ 5,714	\$ 5,857
IMRF	\$ 10,502	\$ 11,616	\$ 11,425	\$ 11,425	\$ 11,425	\$ -	\$ 11,711	\$ 12,004
Medical / Life Insurance	\$ 30,175	\$ 33,969	\$ 33,969	\$ 33,969	\$ 33,969	\$ -	\$ 34,818	\$ 35,688
Supplemental Pension	\$ 1,385	\$ 2,400	\$ 2,400	\$ 2,400	\$ 2,400	\$ -	\$ 2,400	\$ 2,400
SUB-TOTAL	\$ 68,308	\$ 75,112	\$ 77,340	\$ 76,461	\$ 76,461	\$ -	\$ 78,313	\$ 80,211
OPERATING COSTS								
Boards & Commissions	\$ 1,938	\$ 1,200	\$ 2,400	\$ -	\$ -	\$ -	\$ -	\$ -
Dues & Subscriptions	\$ 3,284	\$ 74,545	\$ 74,000	\$ 76,104	\$ 76,104	\$ -	\$ 78,980	\$ 75,059
Liability Insurance	\$ 32,669	\$ 20,000	\$ 35,000	\$ 20,000	\$ 20,000	\$ -	\$ 20,500	\$ 20,500
Maintenance - Vehicles	\$ 28	\$ 500	\$ 2,500	\$ 500	\$ 500	\$ -	\$ 500	\$ 500
Postage & Mailings	\$ 225	\$ 475	\$ 475	\$ 475	\$ 475	\$ -	\$ 475	\$ 475
Printing & Forms	\$ -	\$ 565	\$ 500	\$ 565	\$ 565	\$ -	\$ 615	\$ 565
Economic Incentives	\$ 424,379	\$ 379,000	\$ 420,036	\$ 350,000	\$ 350,000	\$ -	\$ 360,000	\$ 375,000
Supplies - Office	\$ 976	\$ 500	\$ 450	\$ 450	\$ 450	\$ -	\$ 450	\$ 450
Training & Education	\$ 1,878	\$ 500	\$ 500	\$ 500	\$ 500	\$ -	\$ 600	\$ 600
Travel & Meetings	\$ 2,208	\$ 200	\$ 200	\$ 200	\$ 200	\$ -	\$ 200	\$ 200
Vehicle Gas & Oil	\$ 1,259	\$ 500	\$ 2,500	\$ 2,500	\$ 2,500	\$ -	\$ 2,500	\$ 2,500
SUB-TOTAL	\$ 468,844	\$ 477,985	\$ 538,561	\$ 451,294	\$ 451,294	\$ -	\$ 464,820	\$ 475,849
CONTRACTUAL SERVICES								
Consulting / Prof Servs	\$ 229,043	\$ 178,300	\$ 178,300	\$ 87,500	\$ 46,300	\$ 41,200	\$ 46,370	\$ 46,439
Consulting / Prof Reimb	\$ 86,814	\$ 103,700	\$ 113,234	\$ 99,200	\$ 99,200	\$ -	\$ 99,325	\$ 101,472
SUB-TOTAL	\$ 315,857	\$ 282,000	\$ 291,534	\$ 186,700	\$ 145,500	\$ 41,200	\$ 145,695	\$ 147,911
CAPITAL								
Equipment	\$ -	\$ -	\$ -	\$ -	\$ -	\$ -	\$ -	\$ -
SUB-TOTAL	\$ -	\$ -	\$ -	\$ -	\$ -	\$ -	\$ -	\$ -
TOTAL EXPENDITURES	\$ 1,219,471	\$ 1,207,477	\$ 1,294,662	\$ 1,099,918	\$ 1,058,718	\$ 41,200	\$ 1,083,902	\$ 1,108,897

2027 BUDGET SUMMARY

	Maintenance	Discretionary
SALARIES	385,463	-
BENEFITS	76,461	-
OPERATING COSTS	451,294	-
CONTRACTUAL	145,500	41,200
CAPITAL	-	-
TOTAL	<u>1,058,718</u>	<u>41,200</u>

Account #	Description	Department Maintenance Budget Request	City Council Discretionary Expenditures
SALARIES			
20-4010	SALARIES	384,463	-
20-4030	OVERTIME	1,000	-
BENEFITS			
20-4110	SOCIAL SECURITY	23,093	-
20-4111	MEDICARE	5,575	-
20-4115	IMRF	11,425	-
20-4120	MEDICAL/LIFE INSURANCE	33,969	-
20-4135	SUPPLEMENTAL PENSION	2,400	-
OPERATING			
20-4205	BOARDS & COMMISSIONS	-	-
	Secretary	-	-
	Total	-	-
20-4213	DUES & SUBSCRIPTIONS	76,104	-
	APA Membership	500	-
	Open Gov (OG) Business Licensing	14,500	-
	OG Business Building Code Enforcement Lic	14,500	-
	OG Business Building Permitting and Zoning Lic	28,514	-
	Web Q & A / Work Order Soft (end FYE28)	6,940	-
	Zoning Map GIS Annual Requirement	500	-
	GIS Updates Layers	500	-
	5 Laserfische-Licensing - for City Hall	4,300	-
	ESRI-GIS Licensing 1/3 street 1/3 water	450	-
	Marquee sign - Belmont Digital	5,400	-
	Total	76,104	-
20-4219	LIABILITY INSURANCE	20,000	-
	Deductible	5,000	-
	Legal Expense	15,000	-
	Total	20,000	-
20-4229	MAINTENANCE - VEHICLES	500	-
20-4233	POSTAGE/MAILINGS	475	-
	Postage	375	-
	Federal Express	100	-
	Total	475	-
20-4235	PRINTING & FORMS	565	-
	Plat Pages	50	-
	Forms	200	-

	Business Cards		165		-	
	Comprehensive Plan Copies		150		-	
		Total	565		-	
20-4240	ECONOMIC DEVELOPMENT			350,000		-
	Wal-Mart Tax Rebate		350,000		-	
		Total	350,000		-	
20-4253	SUPPLIES - OFFICE			450		-
	Forms - Placards		225		-	
	Folders / Labels		225		-	
		Total	450		-	
20-4263	TRAINING & EDUCATION			500		-
	Staff-Conferences / Training		500		-	
		Total	500		-	
20-4265	TRAVEL/MEETINGS			200		-
	Staff-Travel Expense		100		-	
	Staff-Local Meeting Expense		100		-	
		Total	200		-	
20-4273	VEHICLE (Gas & Oil)			2,500		-
CONTRACTUAL SERVICES						
20-4325	CONSULTING/PROFESSIONAL SERVICES			46,300		41,200
	Engineering Services - Non Reimbursable		4,500		-	
	Contingency		1,200		-	
	Code Enforcement Services		38,500		-	
	Ajudication		2,100		-	
	Planning & Zoning Files - Clerk's Office		-		40,000	
	Clerks Office Record Destruction		-		1,200	
		Total	46,300		41,200	
20-4328	CONSULTING PROFESSIONAL REIMB			99,200		-
	Engineering Services		24,000		-	
	Building Plan Review		30,000		-	
	Elevator Inspections		2,500		-	
	Lawn Cutting		6,000		-	
	Legal Fees		5,000		-	
	Electrical Inspections		9,000		-	
	Building & Plumbing Inspections		21,500		-	
	Contingency		1,200		-	
		Total	99,200		-	
CAPITAL PURCHASES						
20-4815	EQUIPMENT			-		-
		Total		1,058,718		41,200

**POLICE DEPARTMENT BUDGET
FISCAL YEAR 2027**

ACCOUNT	FYE 25 ACTUAL	FYE 26 BUDGET	FYE 26 ESTIMATED ACTUAL	FYE 27 REQUEST	DEPT MAINT BUDGET REQUEST	COUNCIL DISCRETIONARY EXPENDITURES	FYE 28 FORECAST	FYE 29 FORECAST
PERSONNEL								
Salaries - Civilians	\$ 505,476	\$ 548,689	\$ 532,704	\$ 553,249	\$ 553,249	\$ -	\$ 569,888	\$ 587,004
Salaries - Officers	\$ 4,420,047	\$ 4,772,126	\$ 4,456,763	\$ 4,774,329	\$ 4,774,329	\$ -	\$ 4,917,559	\$ 5,065,085
Overtime	\$ 555,494	\$ 550,626	\$ 709,418	\$ 587,672	\$ 587,672	\$ -	\$ 591,933	\$ 592,441
SUB-TOTAL	\$ 5,481,017	\$ 5,871,441	\$ 5,698,885	\$ 5,915,250	\$ 5,915,250	\$ -	\$ 6,079,379	\$ 6,244,530
BENEFITS								
Social Security	\$ 30,575	\$ 34,019	\$ 34,019	\$ 34,396	\$ 34,396	\$ -	\$ 35,428	\$ 36,491
Medicare	\$ 75,682	\$ 74,378	\$ 79,142	\$ 74,803	\$ 74,803	\$ -	\$ 77,047	\$ 79,359
IMRF	\$ 28,893	\$ 30,366	\$ 29,159	\$ 30,661	\$ 30,661	\$ -	\$ 31,581	\$ 32,529
Medical / Life Insurance	\$ 406,950	\$ 504,079	\$ 448,577	\$ 591,777	\$ 591,777	\$ -	\$ 620,824	\$ 651,324
Police Pension	\$ 2,587,371	\$ 2,972,000	\$ 2,972,000	\$ 3,109,271	\$ 3,109,271	\$ -	\$ 3,575,662	\$ 4,112,011
Supplemental Pension	\$ 46,196	\$ 48,000	\$ 42,124	\$ 49,200	\$ 49,200	\$ -	\$ 49,200	\$ 49,200
SUB-TOTAL	\$ 3,175,667	\$ 3,662,842	\$ 3,605,021	\$ 3,890,109	\$ 3,890,109	\$ -	\$ 4,389,742	\$ 4,960,913
OPERATING COSTS								
Animal Control	\$ 1,405	\$ 2,000	\$ 645	\$ 2,000	\$ 2,000	\$ -	\$ 2,000	\$ 2,000
Auxiliary Police	\$ 162	\$ -	\$ -	\$ -	\$ -	\$ -	\$ -	\$ -
Boards & Commissions	\$ 7,739	\$ 13,250	\$ 34,524	\$ 44,750	\$ 43,750	\$ 1,000	\$ 13,550	\$ 27,550
Dues & Subscriptions	\$ 2,509	\$ 2,950	\$ 2,979	\$ 2,950	\$ 2,950	\$ -	\$ 3,000	\$ 3,025
Investigation & Equipment	\$ 44,462	\$ 92,055	\$ 87,983	\$ 146,585	\$ 146,585	\$ -	\$ 112,800	\$ 115,300
Liability Insurance	\$ 40,952	\$ 72,200	\$ 51,315	\$ 111,200	\$ 111,200	\$ -	\$ 108,520	\$ 110,720
Maintenance - Equipment	\$ 25,682	\$ 32,450	\$ 30,510	\$ 31,750	\$ 31,500	\$ 250	\$ 35,050	\$ 35,050
Maintenance - Vehicles	\$ 23,210	\$ 24,800	\$ 23,131	\$ 50,800	\$ 47,400	\$ 3,400	\$ 47,425	\$ 53,575
Postage & Mailings	\$ 1,210	\$ 3,500	\$ 1,640	\$ 3,500	\$ 3,500	\$ -	\$ 3,500	\$ 3,500
Printing & Forms	\$ 440	\$ 1,500	\$ 1,270	\$ 1,500	\$ 1,500	\$ -	\$ 1,500	\$ 1,500
Public Relations	\$ 6,020	\$ 5,000	\$ 4,628	\$ 5,000	\$ -	\$ 5,000	\$ 5,000	\$ 5,000
Rent - Equipment	\$ 600	\$ 5,800	\$ 3,100	\$ 5,800	\$ 2,800	\$ 3,000	\$ 6,000	\$ 6,000
Supplies - Office	\$ 6,216	\$ 7,000	\$ 7,403	\$ 7,000	\$ 7,000	\$ -	\$ 7,000	\$ 7,000
Training & Education	\$ 45,515	\$ 68,245	\$ 66,851	\$ 90,335	\$ 90,335	\$ -	\$ 60,000	\$ 60,000
Travel & Meetings	\$ 9,767	\$ 38,865	\$ 25,249	\$ 31,515	\$ 31,515	\$ -	\$ 31,500	\$ 31,500
Telephone	\$ 16,664	\$ 18,100	\$ 17,586	\$ 18,100	\$ 18,100	\$ -	\$ 18,100	\$ 18,100
Uniforms	\$ 58,740	\$ 59,500	\$ 62,343	\$ 67,900	\$ 67,900	\$ -	\$ 65,100	\$ 66,900
Utilities	\$ 10,355	\$ 21,000	\$ 19,272	\$ 21,000	\$ 21,000	\$ -	\$ 22,000	\$ 23,000
Vehicle Gas & Oil	\$ 88,751	\$ 90,000	\$ 60,274	\$ 90,000	\$ 90,000	\$ -	\$ 100,000	\$ 110,000
SUB-TOTAL	\$ 390,399	\$ 558,215	\$ 500,703	\$ 731,685	\$ 719,035	\$ 12,650	\$ 642,045	\$ 679,720
CONTRACTUAL SERVICES								
Bad Debt Expense	\$ 5,572	\$ -	\$ -	\$ -	\$ -	\$ -	\$ -	\$ -
Consulting / Prof Service	\$ 556,825	\$ 597,650	\$ 585,239	\$ 602,600	\$ 580,100	\$ 22,500	\$ 631,896	\$ 665,139
DuMeg / Merit / Child Center	\$ 27,680	\$ 113,720	\$ 82,196	\$ 123,720	\$ 28,720	\$ 95,000	\$ 129,970	\$ 134,958
SUB-TOTAL	\$ 590,077	\$ 711,370	\$ 667,435	\$ 726,320	\$ 608,820	\$ 117,500	\$ 761,866	\$ 800,097
CAPITAL								
Equipment	\$ 862,362	\$ 48,500	\$ 89,867	\$ 148,840	\$ -	\$ 148,840	\$ 108,340	\$ 108,340
SUB-TOTAL	\$ 862,362	\$ 48,500	\$ 89,867	\$ 148,840	\$ -	\$ 148,840	\$ 108,340	\$ 108,340
TOTAL EXPENDITURES	\$ 10,499,522	\$ 10,852,368	\$ 10,561,910	\$ 11,412,204	\$ 11,133,214	\$ 278,990	\$ 11,981,373	\$ 12,793,599

2027 BUDGET SUMMARY

	Maintenance	Discretionary
SALARIES	\$ 5,915,250	\$ -
BENEFITS	\$ 3,890,109	\$ -
OPERATING COSTS	\$ 719,035	\$ 12,650
CONTRACTUAL	\$ 608,820	\$ 117,500
CAPITAL	\$ -	\$ 148,840
TOTAL	<u>\$ 11,133,214</u>	<u>\$ 278,990</u>

Account #	Description	Department Maintenance Budget Request	City Council Discretionary Expenditures
SALARIES			
40-4010	SALARIES - CIVILIANS	\$ 553,249	\$ -
	Records Clerk (4)	\$ 276,636	\$ -
	Administrative Manager (1)	\$ 103,284	\$ -
	Records Clerk (Part Time)	\$ 25,064	\$ -
	CSO (3) (Part Time)	\$ 88,018	\$ -
	Property Clerk (Part Time)	\$ 36,150	\$ -
	Merit Bonus	\$ 24,098	\$ -
	Total	\$ 553,249	\$ -
40-4020	SALARIES - OFFICERS	\$ 4,774,329	\$ -
	Union Salaries (33)	\$ 3,945,518	\$ -
	Non-Union Salaries (3)	\$ 506,797	\$ -
	Holiday Bonus	\$ 151,751	\$ -
	Officer in Charge	\$ 22,000	\$ -
	Outside Details	\$ 25,000	\$ -
	Holiday Pay	\$ 113,813	\$ -
	Merit Bonus	\$ 9,450	\$ -
	Total	\$ 4,774,329	\$ -
40-4030	OVERTIME	\$ 587,672	\$ -
	General	\$ 350,000	\$ -
	Comp Sell Back	\$ 221,233	\$ -
	K-9 fixed OT	\$ 16,439	\$ -
	Total	\$ 587,672	\$ -
BENEFITS			
40-4110	SOCIAL SECURITY	\$ 34,396	\$ -
40-4111	MEDICARE	\$ 74,803	\$ -
40-4115	IMRF	\$ 30,661	\$ -
40-4120	MEDICAL/LIFE INSURANCE	\$ 591,777	\$ -
40-4130	POLICE PENSION	\$ 3,109,271	\$ -
40-4135	SUPPLEMENTAL PENSION	\$ 49,200	\$ -
OPERATING			
40-4201	ANIMAL CONTROL	\$ 2,000	\$ -
40-4203	AUXILIARY POLICE	\$ -	\$ -
	General (Program Discontinued)	\$ -	\$ -
	Total	\$ -	\$ -
40-4205	BOARDS & COMMISSION	\$ 43,750	\$ 1,000
	Hiring Expenses	\$ 15,000	\$ -
	Police Officer List (FYE29)	\$ 14,500	\$ -
	Training & Assoc	\$ -	\$ 1,000
	Sergeant List (FYE27)	\$ 14,000	\$ -
	Supplies	\$ 250	\$ -
	Total	\$ 43,750	\$ 1,000
40-4213	DUES & SUBSCRIPTIONS	\$ 2,950	\$ -
	Dues	\$ 2,300	\$ -

	Subscriptions		\$ 650		\$ -	
		Total	\$ 2,950		\$ -	
40-4217	INVESTIGATION & EQUIPMENT			\$ 146,585		\$ -
	Range (Ammunition & Supplies)		\$ 64,835		\$ -	
	Batteries		\$ 600		\$ -	
	Evidence Supplies		\$ 5,100		\$ -	
	Canine Food/Equipment		\$ 1,750		\$ -	
	Investigative Services		\$ 8,300		\$ -	
	Leads-On-Line		\$ 3,600		\$ -	
	Prisoner Needs		\$ 250		\$ -	
	BEAST Software		\$ 1,650		\$ -	
	Thompson-Rueters		\$ 5,800		\$ -	
	Peer Jury		\$ 500		\$ -	
	LPR - Flock		\$ 49,300		\$ -	
	Text Messaging		\$ 4,900		\$ -	
		Total	\$ 146,585		\$ -	
40-4219	LIABILITY INSURANCE			\$ 111,200		\$ -
	Legal		\$ 25,000		\$ -	
	Prosecution		\$ 45,000		\$ -	
	PPE / First Aid		\$ 7,000		\$ -	
	Fire Extinguishers		\$ 2,000		\$ -	
	Wellness Fair		\$ 2,000		\$ -	
	Deductibles		\$ 25,000		\$ -	
	Administrative Judge		\$ 4,200		\$ -	
	Gas Mask Testing		\$ 1,000		\$ -	
		Total	\$ 111,200		\$ -	
40-4225	MAINTENANCE - EQUIPMENT			\$ 31,500		\$ 250
	K9 (Veterinarian)		\$ 2,000		\$ -	
	Office Equipment		\$ 4,000		\$ -	
	Portable Radios		\$ 2,500		\$ -	
	Copier Service		\$ 1,850		\$ -	
	Radar Sign maintenance		\$ 2,000		\$ -	
	Frontline (Citizen Reporting)		\$ -		\$ 250	
	Laserfiche		\$ 725		\$ -	
	APB Net (Critical Reach)		\$ 575		\$ -	
	Biohazard Cleanup		\$ 1,000		\$ -	
	Video Surveillance Licensing		\$ 3,200		\$ -	
	iTouch (fingerprinting)		\$ 6,000		\$ -	
	COPFTO		\$ 2,000		\$ -	
	Pace		\$ 3,700		\$ -	
	Frontline (Pro-Standards)		\$ 1,950		\$ -	
		Total	\$ 31,500		\$ 250	
40-4229	MAINTENANCE - VEHICLES			\$ 47,400		\$ 3,400
	Car Washes		\$ 3,600		\$ 3,400	
	Repairs		\$ 10,000		\$ -	
	Tires		\$ 7,500		\$ -	
	Registrations		\$ 1,200		\$ -	
	Radios / Lights / Sirens		\$ 1,500		\$ -	
	Axon Fleet Cameras		\$ 23,000		\$ -	
	Radar Certifications		\$ 600		\$ -	
		Total	\$ 47,400		\$ 3,400	
40-4233	POSTAGE/MAILINGS			\$ 3,500		\$ -
40-4235	PRINTING & FORMS			\$ 1,500		\$ -
40-4239	PUBLIC RELATIONS			\$ -		\$ 5,000
	Materials & Supplies		\$ -		\$ 5,000	
		Total	\$ -		\$ 5,000	
40-4243	RENT - EQUIPMENT			\$ 2,800		\$ 3,000
	Range Rental Fees		\$ 2,800		\$ -	
	Rentals		\$ -		\$ 3,000	
		Total	\$ 2,800		\$ 3,000	
40-4253	SUPPLIES - OFFICE			\$ 7,000		\$ -
40-4263	TRAINING & EDUCATION			\$ 90,335		\$ -

40-4265	TRAVEL/MEETINGS			\$ 31,515		\$ -
	Training Meals		\$ 4,000		\$ -	
	NEMRT In House		\$ 500		\$ -	
	Lodging		\$ 7,900		\$ -	
	Conference / Seminar		\$ 16,115		\$ -	
	Meetings (Supplies/Books)		\$ 1,000		\$ -	
	Professional Meetings		\$ 1,000		\$ -	
	Mileage Reimbursement		\$ 1,000		\$ -	
		Total	\$ 31,515		\$ -	
40-4267	TELEPHONE			\$ 18,100		\$ -
	EVDO Verizon		\$ 12,500		\$ -	
	Comcast - Internet		\$ 5,100		\$ -	
	Language Line		\$ 500		\$ -	
		Total	\$ 18,100		\$ -	
40-4269	UNIFORMS			\$ 67,900		\$ -
	Allowance		\$ 39,600		\$ -	
	Non-Sworn		\$ 1,000		\$ -	
	Repl. Vests (9 @ \$1000)		\$ 9,000		\$ -	
	New Officers (5)		\$ 15,000		\$ -	
	SWAT Uniforms		\$ 2,100		\$ -	
	Badges		\$ 1,200		\$ -	
		Total	\$ 67,900		\$ -	
40-4271	UTILITIES - GAS/ELECTRIC/SEWER			\$ 21,000		\$ -
	Nicor		\$ 16,000		\$ -	
	Sewer		\$ 5,000		\$ -	
		Total	\$ 21,000		\$ -	
40-4273	VEHICLE (Gas & Oil)			\$ 90,000		\$ -
CONTRACTUAL SERVICES						
40-4325	CONSULTING/PROFESSIONAL SERVICES			\$ 580,100		\$ 22,500
	Lexipol		\$ 12,100		\$ -	
	DuCOMM (Shares & Building Costs)		\$ 507,500		\$ -	
	DuJIS (CAD/RMS/FBR)		\$ 54,500		\$ -	
	Crime Analyst Consulting		\$ -		\$ 7,500	
	Mental Health Examinations		\$ 6,000		\$ -	
	Radio (CSO & Auxilliary)		\$ -		\$ -	
	EOP Consulting		\$ -		\$ 15,000	
		Total	\$ 580,100		\$ 22,500	
40-4337	DUMEG/MERIT/CHILD CENTER			\$ 28,720		\$ 95,000
	MERIT		\$ 6,500		\$ -	
	Children's Center		\$ 3,500		\$ -	
	DuMEG		\$ 18,720		\$ -	
	Social Worker		\$ -		\$ 95,000	
		Total	\$ 28,720		\$ 95,000	
CAPITAL						
40-4815	EQUIPMENT			\$ -		\$ 148,840
	Contingency		\$ -		\$ 115,000	
	Booking Maintenance		\$ -		\$ 25,000	
	Employee Appreciation Room Upgrade		\$ -		\$ 500	
	Fitness Room Eval		\$ -		\$ 340	
	Repair Costs - Fitness Room		\$ -		\$ 8,000	
	Interior building improvements FYE28 FYE29 TBD		\$ -		\$ -	
		Total	\$ -		\$ 148,840	
		Total		\$ 11,133,214		\$ 278,990

City of Darien

3/6/2026

STREETS DEPARTMENT FISCAL YEAR 2027

ACCOUNT	FYE 25 ACTUAL	FYE 26 BUDGET	FYE 26 ESTIMATED ACTUAL	FYE 27 REQUEST	DEPT MAINT BUDGET REQUEST	COUNCIL DISCRETIONARY EXPENDITURES	FYE 28 FORECAST	FYE 29 FORECAST
PERSONNEL								
Salaries	\$ 916,756	\$ 895,668	\$ 950,762	\$ 924,106	\$ 924,106	\$ -	\$ 946,584	\$ 969,623
Overtime	\$ 56,456	\$ 103,000	\$ 88,407	\$ 103,000	\$ 103,000	\$ -	\$ 103,000	\$ 103,000
SUB-TOTAL	\$ 973,212	\$ 998,668	\$ 1,039,169	\$ 1,027,106	\$ 1,027,106	\$ -	\$ 1,049,584	\$ 1,072,623
BENEFITS								
Social Security	\$ 58,084	\$ 65,017	\$ 64,428	\$ 63,061	\$ 63,061	\$ -	\$ 65,156	\$ 67,304
Medicare	\$ 13,628	\$ 15,206	\$ 15,068	\$ 14,748	\$ 14,748	\$ -	\$ 15,238	\$ 15,741
IMRF	\$ 51,120	\$ 66,169	\$ 56,380	\$ 62,403	\$ 62,403	\$ -	\$ 64,365	\$ 66,376
Medical / Life Insurance	\$ 146,143	\$ 176,137	\$ 153,716	\$ 153,716	\$ 153,716	\$ -	\$ 153,716	\$ 161,402
Supplemental Pension	\$ 2,492	\$ 2,400	\$ 2,400	\$ 2,400	\$ 2,400	\$ -	\$ 2,400	\$ 2,400
SUB-TOTAL	\$ 271,467	\$ 324,929	\$ 291,992	\$ 296,327	\$ 296,327	\$ -	\$ 300,875	\$ 313,222
OPERATING COSTS								
Dues & Subscriptions	\$ -	\$ 14,440	\$ 14,440	\$ 73,124	\$ 27,473	\$ 45,651	\$ 50,032	\$ 51,456
Liability Insurance	\$ 31,484	\$ 42,790	\$ 42,000	\$ 52,215	\$ 48,215	\$ 4,000	\$ 43,117	\$ 44,448
Maintenance - Buildings	\$ 327,645	\$ 838,823	\$ 450,000	\$ 422,360	\$ 400,360	\$ 22,000	\$ 244,115	\$ 199,115
Maintenance - Equipment	\$ 39,355	\$ 54,800	\$ 43,000	\$ 37,300	\$ 37,300	\$ -	\$ 38,757	\$ 40,113
Maintenance - Vehicles	\$ 79,166	\$ 117,500	\$ 110,000	\$ 121,750	\$ 121,750	\$ -	\$ 119,150	\$ 122,325
Postage & Mailings	\$ 170	\$ 500	\$ 500	\$ 500	\$ 500	\$ -	\$ 500	\$ 500
Rent - Equipment	\$ 9,476	\$ 9,000	\$ 8,000	\$ 9,200	\$ 2,500	\$ 6,700	\$ 9,200	\$ 9,200
Supplies - Office	\$ 3,324	\$ 2,553	\$ 2,500	\$ 2,753	\$ 2,753	\$ -	\$ 4,006	\$ 4,128
Supplies - Other	\$ 259,152	\$ 291,900	\$ 240,000	\$ 251,000	\$ 230,000	\$ 21,000	\$ 233,339	\$ 234,927
Small Tools & Equipment	\$ 16,279	\$ 21,800	\$ 20,000	\$ 3,800	\$ 3,800	\$ -	\$ 3,850	\$ 3,850
Training & Education	\$ 4,382	\$ 12,450	\$ 5,000	\$ 12,450	\$ 12,450	\$ -	\$ 8,250	\$ 8,250
Uniforms	\$ 13,384	\$ 15,650	\$ 15,000	\$ 15,900	\$ 15,900	\$ -	\$ 15,100	\$ 15,100
Utilities (Elec/Gas/Wtr/Sewer)	\$ 20,608	\$ 7,200	\$ 7,200	\$ 7,200	\$ 7,200	\$ -	\$ 7,200	\$ 7,200
Telephone	\$ -	\$ 25,800	\$ 25,000	\$ 19,800	\$ 19,800	\$ -	\$ 19,800	\$ 19,800
Vehicle Gas & Oil	\$ 61,399	\$ 96,790	\$ 77,000	\$ 73,690	\$ 73,690	\$ -	\$ 75,532	\$ 77,798
SUB-TOTAL	\$ 865,824	\$ 1,551,996	\$ 1,059,640	\$ 1,103,042	\$ 1,003,691	\$ 99,351	\$ 871,947	\$ 838,211
CONTRACTUAL SERVICES								
Consulting / Prof Servs	\$ 62,823	\$ 45,450	\$ 55,000	\$ 26,100	\$ 26,100	\$ -	\$ 13,300	\$ 26,000
Janitorial Service	\$ -	\$ 4,750	\$ 3,500	\$ 4,050	\$ 4,050	\$ -	\$ 4,050	\$ 4,050
Forestry	\$ 167,682	\$ 373,484	\$ 373,000	\$ 381,851	\$ 244,217	\$ 137,634	\$ 188,326	\$ 192,470
Street Light Op & Maint	\$ 40,691	\$ 92,000	\$ 75,000	\$ 80,000	\$ 80,000	\$ -	\$ 82,000	\$ 85,000
Mosquito Abatement	\$ 39,900	\$ 42,500	\$ 42,500	\$ 43,700	\$ 43,700	\$ -	\$ 45,011	\$ 46,361
Residential Concrete Prog	\$ 7,868	\$ -	\$ 12,947	\$ -	\$ -	\$ -	\$ -	\$ -
Street Sweeping	\$ 20,148	\$ 49,700	\$ 44,000	\$ 56,575	\$ 56,575	\$ -	\$ 59,297	\$ 62,179
Drainage Projects	\$ 80,567	\$ 130,000	\$ 64,385	\$ 201,000	\$ 40,000	\$ 161,000	\$ 100,000	\$ 100,000
Tree Trimming	\$ 263,400	\$ 192,648	\$ 198,000	\$ 193,000	\$ 193,000	\$ -	\$ 197,500	\$ 201,000
SUB-TOTAL	\$ 683,079	\$ 930,532	\$ 868,332	\$ 986,276	\$ 687,642	\$ 298,634	\$ 689,484	\$ 717,060
CAPITAL								
Capital Improvements	\$ -	\$ -	\$ -	\$ -	\$ -	\$ -	\$ -	\$ -
Equipment	\$ 935,167	\$ 373,810	\$ 201,213	\$ 523,000	\$ 167,500	\$ 355,500	\$ 10,000	\$ 232,300
SUB-TOTAL	\$ 935,167	\$ 373,810	\$ 201,213	\$ 523,000	\$ 167,500	\$ 355,500	\$ 10,000	\$ 232,300
DEBT RETIREMENT								
Debt Retire	\$ -	\$ -	\$ -	\$ -	\$ -	\$ -	\$ -	\$ -
Debt Retire - Property	\$ -	\$ -	\$ -	\$ -	\$ -	\$ -	\$ -	\$ -
SUB-TOTAL	\$ -	\$ -	\$ -	\$ -	\$ -	\$ -	\$ -	\$ -
TOTAL EXPENDITURES	\$ 3,728,749	\$ 4,179,935	\$ 3,460,346	\$ 3,935,751	\$ 3,182,266	\$ 753,485	\$ 2,921,890	\$ 3,173,417

2027 BUDGET SUMMARY

	Maintenance	Discretionary
SALARIES	1,027,106	-
BENEFITS	296,327	-
OPERATING COSTS	1,003,691	99,351
CONTRACTUAL	687,642	298,634
CAPITAL	167,500	355,500
DEBT RETIREMENT	-	-
TOTAL	<u>3,182,266</u>	<u>753,485</u>

Account #	Description	Department Maintenance Budget Request	City Council Discretionary Expenditures
SALARIES			
30-4010	SALARIES		924,106
	Salaries - 245K to MFT salaries & 50k to MFT OT	899,106	
	6 Seasonal @ 500 - 30k to MFT	25,000	
	Total	924,106	
30-4030	OVERTIME		103,000
BENEFITS			
30-4110	SOCIAL SECURITY		63,061
30-4111	MEDICARE		14,748
30-4115	IMRF		62,403
30-4120	MEDICAL/LIFE INSURANCE		153,716
30-4135	SUPPLEMENTAL PENSION		2,400
OPERATING			
30-4213	DUES & SUBSCRIPTIONS		27,473
	Web Q & A Module PW Work Order/Resident Work Order Request 1/2 water	3,500	
	Laserfische-Licensing-for Streets & PW Adm Assistant-License Annual 1/2 water	760	
	ESRI-GIS Licensing 1/3 CD & 1/3 water	450	
	Frost Solutions Road Temp Sensors/Mini RWIS 1/2 water	10,200	
	Vaisala-Road Sensors Quant 5 Expires Jun 1, 2028	4,000	
	DTN Weather Forecasting	2,475	
	Sub Surface Maps-Multi Users License	1,125	
	Samsara-GPS Route Cameras Unit 7 Trucks 1/2 water	2,500	651
	JULIE locate 1/2 to water	2,050	
	Loadrite-End Loader weight scale cert and updates	413	
	Open Gov - work order software	-	45,000
	Total	27,473	45,651
30-4219	LIABILITY INSURANCE		48,215
	IRMA Deductible	15,000	
	Safety Vests CLASS 2 AND 3	1,000	
	Safety Glasses & Gloves	1,700	
	Air Mask & Pulmonary Testing and Hearing TBD	4,000	
	Hepat Shots TBD	-	2,000
	Legal Fees	1,050	
	CDL Random Drug Test IDOT	2,200	
	Fire Extinguisher Maint	600	
	DPC - Stormwater Fee	1,200	
	CDL - Reimbursement	360	
	Fuel Tank - Insurance	3,780	
	Safety Lane	1,400	
	OSHA Compliance Program CARRYOVER	12,500	
	Safety Harnesses	750	
	Record Destruction CARRYOVER	1,200	
	Manhole Confined Space Gas Detector	725	
	Manhole Confined Space Gas Detector 2nd Unit	-	2,000
	First Aid Supplies Cintas	750	
	Total	48,215	4,000

30-4223	MAINTENANCE - BUILDING			400,360		22,000
	Base Maintenance - CH & PD 1/2 water		37,000		-	
	CH - Monitor/Radio (ADS) 1/2 water		245		-	
	PD - Monitor/Radio (ADS) 1/2 water		245		-	
	CH Sprinkler Inspection Fox Valley 1/2 water		100		-	
	PD Sprinkler Inspection Fox Valley 1/2 water		100		-	
	Fire Inspections (PD) 1/2 water		190		-	
	Fire Inspections (CH) 1/2 water		190		-	
	PW - Burglar/Fire Inspections 1/2 water		900		-	
	HVAC Repairs PD		3,000		-	
	HVAC - 1/2 water		1,000		-	
	Elevator CH & PD		3,500		-	
	Boiler Inspection		350		-	
	Vestis mat rentals		5,000		-	
	Garage Door Maintenance		1,000		-	
	HVAC Annual Service Contract PD		9,740		-	
	CH Plowing & Salt		7,000		-	
	Generator Maintenance CH, PD, & PW		3,500		-	
	Fuel Pump Maintenance 1/2 water		1,000		-	
	Pest Extermination CH & PD		3,000		-	
	PD Elevator Replacement (FYE29-110k)		-		-	
	75th & Cass - Waterfall Wall		1,000		2,000	
	Clock Tower Paver Bricks & Wall Maint and Misc		2,500		-	
	Clock Tower REPAINT FYE 28		-		-	
	Salt Bin Maintenance 1/2 streets		10,000		-	
	Tuckpointing study (CH & PD)		-		20,000	
	Seal Coating / Striping- City Hall		10,000		-	
	Backflow Testing & Irrigation 75th Street City Hall Irrigation/Sup		4,800		-	
	R&R city hall generator-1/2-carryover		95,000		-	
	R&R police dept generator-carryover		200,000		-	
		Total	400,360		22,000	
30-4225	MAINTENANCE - EQUIPMENT			37,300		-
	Brush Chipper Parts		3,500		-	
	Mower Parts, Blades		3,000		-	
	Small Machine Repairs		3,000		-	
	Grease/Oil/Lubricants		4,500		-	
	Small Equipment Parts		4,500		-	
	Office Equipment Parts		1,000		-	
	Plow Blades		6,000		-	
	Tornado Sirens		2,000		-	
	Off Road Machinery		5,000		-	
	Mechanic Supplies		4,800		-	
		Total	37,300		-	
30-4229	MAINTENANCE - VEHICLES			121,750		-
	General Maintenance - Vehicles		110,000		-	
	Standard Equipment - Vector Maintenance Contract 1/2 water		7,500		-	
	Mechanics Scanner - Annual updates 1/2 water		1,750		-	
	Vector Mtce tools 1/2 water		2,500		-	
		Total	121,750		-	
30-4233	POSTAGE/MAILINGS			500		
30-4243	RENT - EQUIPMENT			2,500		6,700
	Small Equipment		2,500		-	
	Tub Grinder		-		6,700	
		Total	2,500		6,700	
30-4253	SUPPLIES - OFFICE			2,753		-
	Paper, Pens, Etc.		200		-	
	Copy Paper		350		-	
	Plain Paper		153		-	
	Ink Cartridges		1,000		-	
	File Folders		200		-	
	Plotter Paper		600		-	
	Cups & Supplies		250		-	
		Total	2,753		-	

30-4257	SUPPLIE - OTHER			230,000		21,000
	Signs & Accessories		6,000		-	
	Banner Replacement		5,000		-	
	Barricade Maintenance		3,800		-	
	Delineators and Bases (67th Street)		3,000		-	
	Storm Sewer Supplies		10,000		-	
	Contractual Landscape Restoration		20,000		-	
	Top Soils		4,600		-	
	Hot Cold Asphalt Restoration		17,500		-	
	Sod/Seed		5,000		-	
	Fabric Blanket		3,000		-	
	Gases		1,000		-	
	Barricade Rental 7/4		-		1,000	
	Mailboxes - Reimbursable		3,500		-	
	Mailboxes - Public Works		6,000		-	
	Anti-Icing / De-Icing		110,000		-	
	Refuse for Restoration		6,000		-	
	Asphalt Restoration		21,500		-	
	WEED TRIMMERS		4,100		-	
	Holiday Season Lighting-Additional Lighting		-		5,000	
	Flashing Speed Limit Signs (2)		-		15,000	
		Total	230,000		21,000	
30-4259	SMALL TOOLS & EQUIPMENT			3,800		-
	Mechanic Tools		1,100		-	
	Operating Tools		1,500		-	
	Hand Power Tools		1,200		-	
		Total	3,800		-	
30-4263	TRAINING & EDUCATION			12,450		-
	Tuition Reimbursement		1,000		-	
	Arborist Training		1,500		-	
	Arborist Assesment Training		2,800		-	
	Management Seminars		300		-	
	APWA		150		-	
	Machine Operator Training		2,000		-	
	NIPSTA (TRAINER)		500		-	
	First Aid Training		1,700		-	
	CDL Training Class B to A		2,500		-	
		Total	12,450		-	
30-4267	TELEPHONE			19,800		-
	Verizon Service (Sim/Phone)		6,600		-	
	Air Cards, Jet Packs, Misc		13,200		-	
		Total	19,800		-	
30-4269	UNIFORMS			15,900		-
	12 @ 800.00 per person		9,600		-	
	Foreman @ 800		800		-	
	Steel toe boots		3,250		-	
	Part Time Shirts 10 @ 15 ea x 5		750		-	
	Rubber Boots - 12		1,500		-	
		Total	15,900		-	
30-4271	UTILITIES - GAS/ELECTRIC/SEWER			7,200		-
	Electric, Gas, Water, Sewer		5,900		-	
	Darien Pointe Com Ed		1,300		-	
		Total	7,200		-	
30-4273	VEHICLE (Gas & Oil)			73,690		-
	Unleaded Gas		10,980		-	
	Diesel		50,000		-	
	Oil 4100 Quarts		12,710		-	
		Total	73,690		-	
CONTRACTUAL SERVICES						
30-4325	CONSULTING/PROFESSIONAL SERVICES			26,100		-
	Drainage Concerns		3,500		-	
	NPDES Fee		1,000		-	
	Dale Basin - Wetland Mgmt		4,600		-	
	PW Engineering Consult		2,500		-	
	Eleanor/74th Native Planting		4,500		-	
	Engineering Salt Shed Wall Monitoring 1/2 water		5,000		-	
	Storm Sewer Atlas GPS & Updating		5,000		-	
		Total	26,100		-	

30-4345	JANITORIAL SERVICES			4,050		-
	Chemicals, Sprayers, Masks, Etc		800			-
	Housekeeping		750			-
	Cleaning Supplies CH & PD		2,500			-
		Total	4,050			-
30-4350	FORESTRY			244,217		137,634
	Fertilization - Sec I - 75th St N, S Rows/Medians		-		17,263	
	Fertilization - Sec I - 75th St and Plainfield Rd AAD OM 07-202		-		100	
	Fert - section 2a CH-PD 1/2 water		-		441	
	Fertilization - Sec II-B-PW Facility 1/2 water		-		740	
	Fertilization - Sec III-Basins		-		10,500	
	Fertilization - Sec IV-A-75th St Landscaping Beds		-		10,800	
	Fertilization - Sec IV-B-Roadside City Entrance Signs		-		5,850	
	Fertilization - Sec IV-C-Clock Tower Turn Area		-		313	
	Fertilization - Sec IV-C-Clock Tower Mulch Beds		-		927	
	Fertilization Tree 75th St		-		3,660	
	Weed Control Rip-Rap Areas		-		7,040	
	Item A - 75th St Planters, Mulch Areas, Weeding		14,840		-	
	Item B - Entrance Signs Mulch/Weed		5,671		-	
	Item C - Clock Tower Mulch Area		11,501		-	
	Item D-CH Complex,Weeding, Mtce of mulch and rock landsca		8,480		-	
	Item E- Fall Cleanup		5,000		-	
	Marquee Panel Landscape		500		-	
	Contingency Plantings and Install		22,000		-	
	Hardwood Mulch		8,500		-	
	Hardwood Mulch Install		11,400		-	
	Hand Tools - Forestry		2,500		-	
	Tree Anchoring Kits		1,000		-	
	Tree Water Bag R&R		1,000		-	
	Tree Replacement 75th St		-		5,000	
	Residential 50/50 Program - Res Portion Reimb		3,000		-	
	Residential 50/50 Program - City Portion		3,000		-	
	General Tree Replacement-		25,000		-	
	Pine Pkwy Island Mowing - 1/2 Association		825		-	
	City Grant REIMBURSABLE		-		-	
	Crest Basin R&R Evergreen Treatment		2,000		-	
	75th St median Planting Updates		-		15,000	
	Entrance Sign Lighting - Carry Over		65,000		-	
	Tree Management Inventory-Reim GRANT		53,000		-	
	2 Entranceway Signs Replacements		-		60,000	
		Total	244,217			137,634
30-4359	STREET LIGHT OPER & MAINT			80,000		-
	Light Pole Repairs		60,000		-	
	Street Light Requests		20,000		-	
		Total	80,000		-	
30-4365	MOSQUITO ABATEMENT			43,700		-
30-4373	STREET SWEEPING			56,575		-
	May 11-20		11,550		-	
	Sept 14-21		11,550		-	
	Oct 26 - Nov 16		22,275		-	
	Emergency Sweeps		1,200		-	
	Contingency		3,500		-	
	Disposal		6,500		-	
		Total	56,575		-	
30-4374	DRAINAGE PROJECTS			40,000		161,000
	Annual Rear Yard - City Cost		-		85,000	
	Misc Drainage Projects		20,000		-	
	GIS Street Sewer Atlas-CARRYOVER AND WORK IN PROGR		20,000		-	
	8215 Sawyer to Portsmouth		-		31,000	
	8113 Farmingdale to Portsmouth		-		45,000	
		Total	40,000			161,000

30-4375	TREE TRIMMING			193,000		-
	1750 Trees		122,500		-	
	Removals		30,000		-	
	Stump Removal		15,500		-	
	Emerald Ash Borer Emergency		5,000		-	
	Emergency Storm Hazards		15,000		-	
	Restoration Due to Removals		5,000		-	
		Total	193,000		-	
30-4381	RESIDENTIAL CONCRETE PROGRAM			-		-
	CAPITAL PURCHASES					
30-4810	CAPITAL IMPROVEMENTS			-		-
	Storage Facility 8300 Wilmette		-		-	
30-4815	EQUIPMENT			167,500		355,500
	Equipment # 309 - Concrete Mixer FY 29		-		-	
	Truck # 600 - Mechanics Truck CARRYOVER		125,000		-	
	New Grant Truck EV-(1/2 to wtr) total grant 300k		-		300,000	
	Admin E-Vehicle Replc- fye 29		-		-	
	Trailer #301		15,000		-	
	Kubota #202		25,000		-	
	Storage Container & Rear Lot Improvements 1/2 water		-		12,500	
	PW OFFICE HEATING AND AIR CONDITING MINI SPLITS		-		20,000	
	Scissor Lift - FYE 28		-		-	
	2 laptops - 1 for Arborist & 1 for Concrete Liasion 1/2 water		2,500		-	
	206 - Trackless Tractor FYE 29		-		-	
	208 - Trackless Tractor FYE 29		-		-	
	Hydro Seeder/Trailer Replacement 1/2 water		-		23,000	
		Total	167,500		355,500	
	DEBT RETIRE					
30-4905	DEBT RETIRE			-		-
30-4945	DEBT RETIRE - PROPERTY			-		-
		Total		3,182,266		753,485

City of Darien

3/6/2026

CAPITAL PROJECTS FUND BUDGET FISCAL YEAR 2027

ACCOUNT	FYE 25 ACTUAL	FYE 26 BUDGET	FYE 26 ESTIMATED ACTUAL	FYE 27 REQUEST	DEPT MAINT BUDGET REQUEST	COUNCIL DISCRETIONARY EXPENDITURES	FYE 28 FORECAST	FYE 29 FORECAST
REVENUE								
Transfer from General Fund	\$ 3,500,000.00	\$ 2,750,000.00	\$ 4,450,000.00	\$ 2,650,000.00	\$ 2,650,000.00	\$ -	\$ 800,000.00	\$ 600,000.00
Misc Revenue	\$ -	\$ -	\$ -	\$ -	\$ -	\$ -	\$ -	\$ -
Property Taxes	\$ -	\$ -	\$ -	\$ -	\$ -	\$ -	\$ -	\$ -
Grants - Reimbursements	\$ -	\$ 587,000.00	\$ 155,092.00	\$ 575,500.00	\$ -	\$ 575,500.00	\$ -	\$ -
Storm Water Fund Transfer	\$ -	\$ -	\$ -	\$ -	\$ -	\$ -	\$ -	\$ -
Bonds	\$ -	\$ -	\$ -	\$ -	\$ -	\$ -	\$ -	\$ -
Interest Income	\$ 840,235.00	\$ 800,000.00	\$ 720,000.00	\$ 648,000.00	\$ 648,000.00	\$ -	\$ 640,000.00	\$ 530,000.00
TOTAL REVENUES	\$ 4,340,235.00	\$ 4,137,000.00	\$ 5,325,092.00	\$ 3,873,500.00	\$ 3,298,000.00	\$ 575,500.00	\$ 1,440,000.00	\$ 1,130,000.00
CAPITAL								
Ditch - Drainage Projects	\$ 223,999	\$ 105,000	\$ 180,119	\$ 120,000	\$ 90,000	\$ 30,000	\$ 90,000	\$ 90,000
Sidewalk Replacement	\$ 525,978	\$ 466,000	\$ 421,637	\$ 299,920	\$ 299,920	\$ -	\$ 303,218	\$ 310,371
Curb & Gutter Program	\$ 22,579	\$ 774,600	\$ 756,815	\$ 880,575	\$ 880,575	\$ -	\$ 857,795	\$ 866,589
Cap Imp Infrastructure	\$ 37,561	\$ 920,045	\$ 145,000	\$ 1,493,000	\$ 803,000	\$ 690,000	\$ 692,000	\$ 512,000
Street Reconstruction	\$ -	\$ 1,664,500	\$ 1,475,343	\$ 1,514,000	\$ 1,338,500	\$ 175,500	\$ 1,690,270	\$ 1,724,075
Bond Payment	\$ -	\$ -	\$ -	\$ -	\$ -	\$ -	\$ -	\$ -
Consulting / Prof Services	\$ 31,642	\$ 52,000	\$ 48,000	\$ 50,500	\$ 50,500	\$ -	\$ 50,500	\$ 51,000
Economic Incentive	\$ -	\$ -	\$ -	\$ -	\$ -	\$ -	\$ -	\$ -
SUB-TOTAL	\$ 841,759	\$ 3,982,145	\$ 3,026,914	\$ 4,357,995	\$ 3,462,495	\$ 895,500	\$ 3,683,783	\$ 3,554,035
TOTAL EXPENDITURES	\$ 841,759	\$ 3,982,145	\$ 3,026,914	\$ 4,357,995	\$ 3,462,495	\$ 895,500	\$ 3,683,783	\$ 3,554,035
FISCAL YEAR CHANGE	\$ 3,498,476	\$ 154,855	\$ 2,298,178	\$ (484,495)	\$ (164,495)	\$ (320,000)	\$ (2,243,783)	\$ (2,424,035)
BEG FUND BALANCE	\$ 15,521,454	\$ 19,062,468	\$ 19,019,930	\$ 21,318,108			\$ 20,333,613	\$ 18,089,830
NET FISCAL YEAR CHANGE	\$ 3,498,476	\$ 154,855	\$ 2,298,178	\$ (484,495)			\$ (2,243,783)	\$ (2,424,035)
ENDING FUND BALANCE	\$ 19,019,930	\$ 19,217,323	\$ 21,318,108	\$ 20,833,613			\$ 18,089,830	\$ 15,665,795
RESERVE BALANCE	\$ -	\$ (500,000)	\$ -	\$ (500,000)			\$ -	\$ -
AVAILABLE BALANCE	\$ 19,019,930	\$ 18,717,323	\$ 21,318,108	\$ 20,333,613			\$ 18,089,830	\$ 15,665,795

2027 BUDGET SUMMARY

CAPITAL	Maintenance \$ 3,462,495	Discretionary \$ 895,500
TOTAL	\$ 3,462,495	\$ 895,500

Account #	Description	Department Maintenance Budget Request	City Council Discretionary Expenditures
CAPITAL			
25-35-4376	STORM WATER DITCH PROJECTS	90,000	30,000
	Landscape Maint Restoration Inlet Adjustments	65,000	-
	Brick Manhole Rehabilitation	25,000	-
	Wildwood Storm Sewer Prog	-	30,000
	Total	90,000	30,000
25-35-4380	SIDEWALK REPLACEMENTS	299,920	-
	Sidewalk Removal & Replacement	135,000	-
	ADA Sidewalk R&R	81,000	-
	Curb ADA	-	-
	Concrete Milling - Grinding	83,920	-
	Total	299,920	-
25-35-4383	CURB & GUTTER PROGRAM	880,575	-
	Curb & Gutter - City Wide	798,600	-
	Aprons - Sidewalk & Driveway PW Related	24,875	-
	Sealer	17,500	-
	Contingency-Curb and Gutter	39,600	-
	Total	880,575	-
25-35-4390	CAPITAL IMPROVEMENTS - INFRASTRUCTURE	803,000	690,000
	83rd Street Light R&R	1,000	-
	Marquee Plainfield & Cass	2,000	-
	SE Plainfield/Cass - Retaining Wall w/ County carryover	800,000	-
	Salt shed roof repair	-	450,000
	City Hall window replacement	-	240,000
	City Hall and Police Dept tuck point repair (FYE28)	-	-
	storage facility for public works CH garage (FYE28)	-	-
	storage facility for public works TBD fye 29	-	-
	Total	803,000	690,000
25-35-4400	ECONOMIC INCENTIVE	-	-
25-35-4855	STREET RECONSTRUCTION - REHAB	1,338,500	175,500
	Road Program	1,250,000	-
	Selective Base Repair	88,500	-
	School District	-	175,500
	Total	1,338,500	175,500
25-35-4945	BOND PAYMENT	-	-
25-35-4325	CONSULTING - PROFESSIONAL SERVICES	50,500	-
	Street Eng Road Cores & Testing	36,500	-
	Street Eng Bid Prep	14,000	-
	Total	50,500	-
	Total	3,462,495	895,500

CITY OF DARIEN

CAPITAL IMPROVEMENTS PLAN GUIDELINES

FISCAL YEARS ENDING 4/30/26 TO 4/30/29

A capital improvement plan (CIP) is our multi-year plan identifying capital projects to be funded or identified during the 3-year planning period. These CIP guidelines identifies each capital project to be undertaken, the year the improvement project will be started, the amount of funds expected to be expended in each year of the CIP and the way the expenditure will be funded. A CIP also identifies non-core discretionary and expansion projects that a community may want to initiate if funding becomes available. A CIP is not a static document. It should be reviewed every year to reflect changing priorities, unexpected events and opportunities. The CIP should include the maintenance, repair and rehabilitation of existing infrastructure as well as the construction of new infrastructure. This may include capital items exceeding \$75,000 such as buildings, water system, roadways, bridges, storm water systems, and sidewalks.

There are several benefits for developing and adopting a Capital Improvement Plan. Not only does the CIP become a management tool for the City Council and City staff, a CIP also provides valuable information to the citizens, developers and businesses who are interested in the development of the community. The CIP document will assist in leveraging available resources through improved timing of projects, and coordinating City projects with those of other public or private entities.

The CIP sets the general schedule within which public improvements are proposed to be undertaken. The first year reflects the adopted Budget for the fiscal year. The remaining years represent a schedule and estimate of future capital needs that may be funded given projected revenue estimates. A proposed CIP is presented to the Municipal Services Committee and the City Council as part of the annual budget process. A final CIP is presented to the City Council and is adopted concurrently with the annual operating budget effective May 1 of each year.

This plan will illustrate:

1. identified projects
2. project prioritization
3. funding plan for projects.

1 IDENTIFIED PROJECT LIST

The City of Darien identifies capital projects in three categories:

- A. **Core projects**: This category includes maintenance required to maintain existing essential infrastructure in acceptable condition including streets (and related accessory curb/gutter, storm water structures/ditches), sidewalks, buildings and grounds. To meet the criteria of a core project, the project must be part of a multi year rating system such as the road maintenance program or an urgent repair.
- B. **Non-core discretionary projects**: This category includes maintenance required to maintain existing non-essential infrastructure in acceptable condition including entranceway sign replacement, street sign replacement, beautification projects to existing buildings, rights of way, etc.
- C. **Expansion Projects**: This category includes the construction of additional non-essential infrastructure bike paths, new roads, land acquisition, new beautification projects.

2 PROJECT PRIORITIZATION

Capital projects will be prioritized in the following order:

- 1. **Core projects**
- 2. **Non-core discretionary projects**
- 3. **Expansion Projects**

When prioritizing projects the following guidelines will be used:

Consistent with city goals
Linked to other projects
Planned as part of a multi year plan
Included in city comprehensive plan and other planning documents
Eligible for grant or special funding such as a special service area
Reduces liability
Results in more efficient operations
Promotes economic development
Improves public health and safety
Reduces operating budget
Facilitates intergovernmental cooperation
Specific ranking criteria within specific project categories

3 FUNDING PLAN

When developing a funding plan we analyze past, present and future trends in revenue generation, debt levels, general economic factors, new and increased revenues, and project reduction. The objective of the analysis is to determine the amount of funds available from existing and future revenue sources to pay for capital projects. When looking at the cost of doing a project we look at all the project costs; capital, operating and maintenance as well as looking at the cost of not doing a project. If a project or maintenance is delayed, what will the cost of construction be in the future, what are the current yearly operating and maintenance costs and what is the lost opportunity cost to the municipality. Specific criteria we use when developing a funding plan include:

- Project funding will be planned over a three-year period in conjunction with the approval of the annual budget
- Surplus from the general fund, in excess of 3 months operating reserve, will be transferred to the capital projects fund annually
- The capital projects fund shall maintain a minimum fund balance of \$500,000 in each year of the three-year plan to be available for emergency projects
- Core projects will be funded prior to approving any non-core discretionary or expansion projects over the 3-year planning process
- Revenue shall be estimated if it is reasonably planned to be received over the 3-year period
- Revenue shall be considered sufficient for the 3-year plan when core projects are funded and \$500,000 is available for emergency projects
- Bonds will only be issued for projects once the core projects are funded and for projects over \$1,500,000 and have a useful life of at least 15 years.

If revenue is not sufficient for the 3-year period then the city shall have the option to:

- Reduce the scope of core projects
- Reduce operating expenses and transfer the savings to the capital projects fund
- Increase revenues (examples include, but are not limited to, gas tax, real estate tax, home rule sales tax)

CITY OF DARIEN

ENTERPRISE FUNDS BUDGET FISCAL YEAR

May 1, 2026 – April 30, 2027

**WATER FUND REVENUE BUDGET
WATER FUND BUDGET
WATER DEPRECIATION FUND BUDGET**

ENTERPRISE FUNDS

Enterprise Funds are established to account for the financing of self-supporting municipal activities which render services generally on a user charge basis to the general public. The significant characteristic of an enterprise fund is that the accounting system makes it possible to determine whether that particular service area is operated at a profit or a loss in accordance with the generally accepted accounting principles followed by private business concerns. The only enterprise fund operated by the City is the Water Fund.

The Water Depreciation Fund is established to set aside funds from each year's budget to cover replacement of the assets of the fund. Like private businesses, the Water Fund's assets are depreciated as a cost of providing water service. When available, funds are transferred to the Water Depreciation from the Water Operations Fund and held to fund the replacement of water infrastructure.

**WATER REVENUE BUDGET
FISCAL YEAR ENDING 2027**

ACCOUNT	FYE 25 ACTUAL	FYE 26 BUDGET	FYE 26 ESTIMATED ACTUAL	FYE 27 REQUEST	DEPT MAINT BUDGET REQUEST	COUNCIL DISCRETIONARY EXPENDITURES	FYE 28 FORECAST	FYE 29 FORECAST
REVENUE								
Water Sales	\$ 7,789,620	\$ 8,352,746	\$ 8,476,227	\$ 8,415,769	\$ 8,415,769	\$ -	\$ 8,988,455	\$ 9,011,608
Inspection/Tap-On/Permits	\$ 15,875	\$ 5,000	\$ 15,556	\$ 5,000	\$ 5,000	\$ -	\$ 5,000	\$ 5,000
Other Water Sales	\$ 21,824	\$ 1,000	\$ 4,119	\$ 1,000	\$ 1,000	\$ -	\$ 1,000	\$ 1,000
Meter Sales	\$ 3,528	\$ 1,000	\$ 2,549	\$ 1,000	\$ 1,000	\$ -	\$ 1,000	\$ 1,000
Front Footage Fees	\$ -	\$ -	\$ -	\$ -	\$ -	\$ -	\$ -	\$ -
Miscellaneous Income	\$ -	\$ -	\$ 79,398	\$ 150,000	\$ -	\$ 150,000	\$ -	\$ -
Interest Income	\$ -	\$ 120,000	\$ 105,000	\$ 60,000	\$ 60,000	\$ -	\$ 40,000	\$ 30,000
TOTAL REVENUE	\$ 7,830,847	\$ 8,479,746	\$ 8,682,849	\$ 8,632,769	\$ 8,482,769	\$ 150,000	\$ 9,035,455	\$ 9,048,608
Operating Expenditures	\$ 7,817,630	\$ 9,378,562	\$ 8,990,001	\$ 9,908,092	\$ 8,790,557	\$ 1,117,535	\$ 9,001,909	\$ 9,314,573
Transfer to Water Depreciation	\$ -	\$ -		\$ -	\$ -	\$ -	\$ -	\$ -
TOTAL EXPENDITURES	\$ 7,817,630	\$ 9,378,562	\$ 8,990,001	\$ 9,908,092	\$ 8,790,557	\$ 1,117,535	\$ 9,001,909	\$ 9,314,573
FISCAL YEAR BALANCE	\$ 13,217	\$ (898,816)	\$ (307,152)	\$ (1,275,323)	\$ (307,788)	\$ (967,535)	\$ 33,546	\$ (265,965)
BEG CASH BALANCE	\$ 3,725,963	\$ 3,124,848	\$ 3,210,068	\$ 2,902,916	\$ 2,902,916	\$ -	\$ 1,627,593	\$ 1,661,139
ENDING MODIFIED CASH BALANCE	\$ 3,210,068	\$ 2,226,032	\$ 2,902,916	\$ 1,627,593	\$ 2,595,128	\$ (967,535)	\$ 1,661,139	\$ 1,395,174
RATE		Fixed Fee \$10/Bill \$10.50/1000		Fixed Fee \$15/Bill \$10.50/1000			Fixed Fee \$20/Bill \$11.00/1000	Fixed Fee \$20/Bill \$11.00/1000

City of Darien

3/12/2026

MUNICIPAL SERVICES
WATER FUND BUDGET
FISCAL YEAR 2027

ACCOUNT	FYE 25 ACTUAL	FYE 26 BUDGET	FYE 26 ESTIMATED ACTUAL	FYE 27 REQUEST	DEPT MAINT BUDGET REQUEST	COUNCIL DISCRETIONARY EXPENDITURES	FYE 28 FORECAST	FYE 29 FORECAST
PERSONNEL								
Salaries	\$ 713,092	\$ 789,144	\$ 779,883	\$ 943,269	\$ 943,269	\$ -	\$ 965,851	\$ 988,997
Overtime	\$ 163,699	\$ 150,000	\$ 190,627	\$ 160,000	\$ 160,000	\$ -	\$ 160,000	\$ 160,000
SUB-TOTAL	\$ 876,791	\$ 939,144	\$ 970,510	\$ 1,103,269	\$ 1,103,269	\$ -	\$ 1,125,851	\$ 1,148,997
BENEFITS								
Social Security	\$ 52,156	\$ 54,507	\$ 60,172	\$ 61,583	\$ 61,583	\$ -	\$ 63,122	\$ 64,385
Medicare	\$ 12,292	\$ 12,748	\$ 14,072	\$ 14,402	\$ 14,402	\$ -	\$ 14,762	\$ 15,132
IMRF	\$ 55,319	\$ 52,133	\$ 74,161	\$ 55,253	\$ 55,253	\$ -	\$ 56,634	\$ 58,050
Medical / Life Insurance	\$ 83,560	\$ 91,032	\$ 91,032	\$ 91,032	\$ 91,032	\$ -	\$ 91,032	\$ 91,032
Supplemental Pension	\$ 2,492	\$ 2,400	\$ 2,400	\$ 2,400	\$ 2,400	\$ -	\$ 2,400	\$ 2,400
SUB-TOTAL	\$ 205,819	\$ 212,820	\$ 241,838	\$ 224,670	\$ 224,670	\$ -	\$ 227,951	\$ 230,998
OPERATING COSTS								
Dues & Subscriptions	\$ -	\$ 37,940	\$ 37,900	\$ 84,124	\$ 38,473	\$ 45,651	\$ 73,032	\$ 66,956
Liability Insurance	\$ 201,144	\$ 226,145	\$ 290,000	\$ 507,285	\$ 403,285	\$ 104,000	\$ 405,659	\$ 413,269
Maintenance - Buildings	\$ 104,492	\$ 444,415	\$ 155,000	\$ 471,570	\$ 371,870	\$ 99,700	\$ 60,525	\$ 60,525
Maintenance - Equipment	\$ 5,220	\$ 7,500	\$ 7,500	\$ 7,700	\$ 7,700	\$ -	\$ 7,724	\$ 7,956
Maintenance - Vehicles	\$ 8,976	\$ 29,500	\$ 29,000	\$ 26,750	\$ 26,750	\$ -	\$ 24,775	\$ 25,318
Maintenance - Water Sys	\$ 349,351	\$ 377,300	\$ 350,000	\$ 240,075	\$ 196,575	\$ 43,500	\$ 192,757	\$ 196,877
Postage & Mailings	\$ 381	\$ 1,000	\$ 1,000	\$ 1,000	\$ 1,000	\$ -	\$ 1,000	\$ 1,000
Quality Control	\$ 16,699	\$ 29,850	\$ 15,000	\$ 17,600	\$ 17,600	\$ -	\$ 16,782	\$ 17,155
Supplies - Office	\$ 884	\$ 1,200	\$ 1,100	\$ 1,200	\$ 1,200	\$ -	\$ 1,200	\$ 1,200
Supplies - Operating	\$ 2,361	\$ 4,500	\$ 4,000	\$ 4,500	\$ 4,500	\$ -	\$ 4,500	\$ 4,500
Training & Education	\$ 2,666	\$ 5,900	\$ 4,500	\$ 5,900	\$ 5,900	\$ -	\$ 5,173	\$ 5,205
Telephone	\$ 11,925	\$ 21,550	\$ 14,000	\$ 17,050	\$ 17,050	\$ -	\$ 17,050	\$ 17,050
Uniforms	\$ 8,867	\$ 12,450	\$ 11,000	\$ 12,950	\$ 12,950	\$ -	\$ 12,490	\$ 12,490
Utilities	\$ 63,267	\$ 40,000	\$ 38,000	\$ 40,000	\$ 40,000	\$ -	\$ 40,600	\$ 41,209
Vehicle Gas & Oil	\$ 31,296	\$ 25,100	\$ 25,000	\$ 25,100	\$ 25,100	\$ -	\$ 26,355	\$ 27,673
SUB-TOTAL	\$ 807,529	\$ 1,264,350	\$ 983,000	\$ 1,462,804	\$ 1,169,953	\$ 292,851	\$ 889,621	\$ 898,383
CONTRACTUAL SERVICES								
Audit	\$ 13,500	\$ 13,500	\$ 13,250	\$ 13,500	\$ 13,500	\$ -	\$ 13,500	\$ 13,500
Consulting / Prof Servs	\$ 14,803	\$ 19,550	\$ 13,000	\$ 22,050	\$ 22,050	\$ -	\$ 17,050	\$ 17,050
Leak Detection	\$ -	\$ 2,800	\$ 1,500	\$ 1,500	\$ 1,500	\$ -	\$ 1,500	\$ 1,500
Date Processing	\$ 166,967	\$ 162,837	\$ 162,837	\$ 162,837	\$ 162,837	\$ -	\$ 162,837	\$ 162,837
Rent - Equipment	\$ -	\$ -	\$ -	\$ -	\$ -	\$ -	\$ -	\$ -
DuPage Water Commission	\$ 4,922,682	\$ 5,337,842	\$ 5,235,167	\$ 5,325,429	\$ 5,325,429	\$ -	\$ 5,505,952	\$ 5,596,213
Janitorial Service	\$ 6,380	\$ 8,050	\$ 7,500	\$ 8,650	\$ 8,650	\$ -	\$ 9,163	\$ 9,163
Forestry	\$ 3,473	\$ 4,534	\$ 2,500	\$ 4,534	\$ -	\$ 4,534	\$ 4,534	\$ 4,581
SUB-TOTAL	\$ 5,127,805	\$ 5,549,113	\$ 5,435,754	\$ 5,538,500	\$ 5,533,966	\$ 4,534	\$ 5,714,536	\$ 5,804,844
CAPITAL								
Capital Improvements				\$ 327,500	\$ -	\$ 327,500	\$ 290,000	\$ 295,000
Equipment	\$ 472,468	\$ 363,310	\$ 310,000	\$ 500,150	\$ 7,500	\$ 492,650	\$ 15,000	\$ 197,300
Water Meters	\$ -	\$ 5,000	\$ 5,000	\$ 12,500	\$ 12,500	\$ -	\$ 5,000	\$ 5,000
SUB-TOTAL	\$ 472,468	\$ 368,310	\$ 315,000	\$ 840,150	\$ 20,000	\$ 820,150	\$ 310,000	\$ 497,300
TRANSFER								
Transfer to Water Depecciation	\$ -	\$ -	\$ -	\$ -	\$ -	\$ -	\$ -	\$ -
General Fund Service Charge	\$ 250,000	\$ 350,000	\$ 350,000	\$ 350,000	\$ 350,000	\$ -	\$ 350,000	\$ 350,000
SUB-TOTAL	\$ 250,000	\$ 350,000	\$ 350,000	\$ 350,000	\$ 350,000	\$ -	\$ 350,000	\$ 350,000
DEBT RETIREMENT								
Debt Retire	\$ 77,218	\$ 694,825	\$ 693,900	\$ 388,700	\$ 388,700	\$ -	\$ 383,950	\$ 384,050
SUB-TOTAL	\$ 77,218	\$ 694,825	\$ 693,900	\$ 388,700	\$ 388,700	\$ -	\$ 383,950	\$ 384,050
TOTAL EXPENDITURES	\$ 7,817,630	\$ 9,378,562	\$ 8,990,001	\$ 9,908,092	\$ 8,790,557	\$ 1,117,535	\$ 9,001,909	\$ 9,314,573

2027 BUDGET SUMMARY

	Maintenance	Discretionary
SALARIES	1,103,269	-
BENEFITS	224,670	-
OPERATING COSTS	1,169,953	292,851
CONTRACTUAL	5,533,966	4,534
CAPITAL	20,000	820,150
TRANSFER	350,000	-
DEBT RETIREMENT	388,700	-
TOTAL	<u>8,790,557</u>	<u>1,117,535</u>

Account #	Description	Department Maintenance Budget Request	City Council Discretionary Expenditures
SALARIES			
50-4010	SALARIES	943,269	-
50-4030	OVERTIME	160,000	-
BENEFITS			
50-4110	SOCIAL SECURITY	61,583	-
50-4111	MEDICARE	14,402	-
50-4115	IMRF	55,253	-
50-4120	MEDICAL/LIFE INSURANCE	91,032	-
50-4135	SUPPLEMENTAL PENSION	2,400	-
OPERATING			
50-4213	DUES & SUBSCRIPTIONS	38,473	45,651
	Leak Logger Subscription FYE28	-	-
	Web Q & A Module PW Work Order/ Resident Work Order Request 1/2 streets	3,500	-
	Laserfische-Licensing-for Streets/PW Adm Assistant-License Annual 1/2 streets	760	-
	ESRI-GIS Licensing 1/3 comm dev 1/3 street	450	-
	Frost Solutions Road Temp SensorsMini RWIS 1/2 streets	10,200	-
	Vaisala-Road Sensors Quant 5 Expires Jun 1, 2028	4,000	-
	Chlorine Analyzer Maint Agreement	3,500	-
	DTN Weather Forecasting	2,475	-
	Sub Surface Maps-Multi Users License	1,125	-
	Samsara-GPS Route Cameras Unit 7 Trucks	2,500	651
	Grundfos-Pump Motor Subscription	7,500	-
	JULIE locate 1/2 to streets	2,050	-
	Loadrite-End Loader weight scale cert and updates	413	-
	Open Gov work order software	-	45,000
	Total	38,473	45,651
50-4219	LIABILITY INSURANCE	403,285	104,000
	IRMA	360,000	-
	IRMA Deductible	15,000	-
	Safety Vests CLASS 2 AND 3	1,000	-
	Safety Glasses & Gloves	1,000	-
	Air Mask & Pulmonary Testing and Hearing	4,000	-
	Hepat Shots TBD	2,000	-
	Legal Fees	1,000	-
	CDL Random Drug Test IDOT	2,200	-
	Fire Extinguisher Maint	600	-
	CDL - Reimbursement	360	-
	Safetylane	1,400	-
	Safety Harness Certification	750	-
	OSHA Compliance Program CARRYOVER	12,500	-
	First Aid Supplies Cintas	750	-
	Manhole Confined Space Gas Detector Maint	725	-
	Manhole Confined Space Gas Detector 2nd Unit	-	2,000
	High Shore Trench Boxes and Shoring Plates and Traile	-	102,000
	Total	403,285	104,000

50-4223	MAINTENANCE - BUILDING		371,870		99,700
	Base Maintenance - CH & PD 1/2 streets	37,000		-	
	CH - Monitor / Radio (ADS) 1/2 streets	245		-	
	PD - Monitor / Radio (ADS) 1/2 streets	245		-	
	CH Sprinkler Inspection 1/2 streets	100		-	
	PD Sprinkler Inspection 1/2 streets	100		-	
	Fire Inspection (CH) 1/2 streets	190		-	
	Fire Inspection (PD) 1/2 streets	190		-	
	PW - Burglar/Fire/Inspection 1/2 streets	900		-	
	Fuel Pump Maintenance 1/2 streets	1,000		-	
	HVAC - 1/2 streets	1,000		-	
	Maintenance - Tower Lights	2,000		-	
	Garage Doors	1,000		-	
	Garage Door and Man Door Repl Plant 5	12,000		-	
	Garage Door plant 4	2,600		-	
	Seal Coating - Parking Lot Repl Plant 3	-		65,000	
	Seal Coating / Striping- City Hall	10,000		-	
	Electrical - Pumping Station Pumps and Motors Maint	20,000		-	
	Generator/Transfer Switch Plant 2 CARRYOVER	170,000		-	
	Generator Repairs Plant 2	3,500		-	
	Backflow Test & Irrigation 75th St City Hall Irrigation/Suppression Syst 1/2 streets	4,800		-	
	PW Salt Shed Monitoring and Maintenance 1/2 streets	10,000		-	
	CH Generator Repl 1/2 streets-carry over	95,000		-	
	Plant Three-Heaters	-		9,200	
	Plant Three-Heaters	-		10,000	
	Plant 5 Wall and Furnace Heaters	-		5,000	
	Plant 4 Heater	-		3,500	
	75th Street Pumping Station-4 Heaters	-		7,000	
	Total	371,870		99,700	
50-4225	MAINTENANCE - EQUIPMENT		7,700		-
	Truck Tires -Off Road Machinery	5,000		-	
	Miscellaneous Maintenance	1,400		-	
	Printer Maintenance	600		-	
	Office Fax Machine JULIE PRINTER	700		-	
	Total	7,700		-	
50-4229	MAINTENANCE - VEHICLES		26,750		-
	General Maintenance	10,000		-	
	Tractor Maintenance	5,000		-	
	Standard Equipment - Vactor Mtce Contract 1/2 streets	7,500		-	
	Mechanics Scanner-ANNUAL UPDATES 1/2 streets	1,750		-	
	Vactor Mtce tools 1/2 streets	2,500		-	
	Total	26,750		-	
50-4231	MAINTENANCE - WATER SYSTEM		196,575		43,500
	Water Maintenance - Clamps	22,000		-	
	Flat Work Concrete Restoration	47,275		-	
	Asphalt Restoration	21,500		-	
	Landscape Restoration	12,500		-	
	Hydrants, Valves & Accessories	28,000		-	
	Generator O & M	2,000		-	
	Bolts, Water Specialty Tools	6,800		-	
	Truck & Dump Fees	28,000		-	
	EPA-CCDD Soil Testing	6,000		-	
	Pump Motor Maintenance	10,000		-	
	Water Tower Inspections (FYE28)	-		-	
	Street Light Atlas GPS, Line Locating	2,500		-	
	Water Main Atlas GPS & Updating	2,500		-	
	Storm Sewer Atlas GPS & Updating	5,000		-	
	Trash Pumps	2,500		-	
	Water Tower Tanks-Washing	-		30,000	
	Gutermann Zone Log Pressure & Flow Loggers	-		13,500	
	Total	196,575		43,500	

50-4233	POSTAGE/MAILINGS			1,000		-
	Residence Correspondence CCR-Misc		1,000		-	
		Total	1,000		-	
50-4241	QUALITY CONTROL			17,600		-
	EPA - Contract Sampling Stage 2		3,600		-	
	Bacteriological Sampling		7,200		-	
	Chemical Sampling Kits		1,550		-	
	Reagents for Chloromiter, PH & Turbidity Meters		4,000		-	
	Lead and Copper		1,250		-	
		Total	17,600		-	
50-4243	RENT - EQUIPMENT			-		-
50-4253	SUPPLIES - OFFICE			1,200		-
	Copy Paper		250		-	
	Plain Paper		250		-	
	Ink Cartridges Toner		700		-	
		Total	1,200		-	
50-4255	SUPPLIES - OPERATION			4,500		-
	Liquid Chlorine		4,500		-	
		Total	4,500		-	
50-4263	TRAINING & EDUCATION			5,900		-
	AWWA - Membership		450		-	
	Travel & Meetings		150		-	
	CDL Training Class B to A		2,500		-	
	Municipal Services Seminars		250		-	
	Management Seminars		300		-	
	Operator CEU Cert Training		300		-	
	Machine Operator Training		950		-	
	Training & Education		1,000		-	
		Total	5,900		-	
50-4267	TELEPHONE			17,050		-
	Verizon Service (Sim/Phone)		10,050		-	
	Phone Replacement Parts		1,500		-	
	Modems - SCADA System		3,500		-	
	Field I-Pads Sim Cards-Equip Repl		2,000		-	
		Total	17,050		-	
50-4269	UNIFORMS			12,950		-
	7 @ 800.00 per person		5,600		-	
	Foreman and Supt @ 800		1,600		-	
	Steel toe boots		2,250		-	
	Part Time Shirts		500		-	
	Safety & Rubber Boots		3,000		-	
		Total	12,950		-	
50-4271	UTILITIES - GAS/ELECTRIC/SEWER			40,000		-
50-4273	VEHICLE - GAS & OIL			25,100		-
	Unleaded Gas		15,000		-	
	Diesel		8,500		-	
	Oil 4100 Quarts		1,600		-	
		Total	25,100		-	

CONTRACTUAL SERVICES							
50-4320	AUDIT				13,500		-
50-4325	CONSULTING/PROFESSIONAL SERVICES				22,050		-
	Telemetry		3,650			-	
	Julie Membership Dues		8,400			-	
	Water Related Engineering		5,000			-	
	Engineering Salt Shed Wall Monitoring 1/2 streets		5,000			-	
		Total	22,050			-	
50-4326	LEAK DETECTION				1,500		-
	Leak Locating		1,500			-	
		Total	1,500			-	
50-4336	DATA PROCESSING				162,837		-
	DPC Meter Billing		162,837			-	
		Total	162,837			-	
50-4340	DUPAGE WATER COMMISSION				5,325,429		-
50-4345	JANITORIAL SERVICES				8,650		-
	Cleaning Supplies		1,350			-	
	Janitorial Services		6,500			-	
	Sanitizing Chemicals/Sprayers/Etc		800			-	
		Total	8,650			-	
50-4350	FORESTRY				-		4,534
	Fertilization - Sec II-A-CH-PD 1/2 streets		-			441	
	Fertilization - Sec II-B-PW Facility 1/2 streets		-			740	
	Fertilization - Sec II-C-G Water Plant Facilities		-			3,353	
		Total	-			4,534	
CAPITAL PURCHASES							
50-4810	Capital Improvements				-	-	327,500
	Watermain Infrastructure		-			200,000	
	Insertion Valve Equipment IGA		-			122,500	
	Soil Corrosivity Testing		-			5,000	
		Total	-			327,500	
50-4815	EQUIPMENT				7,500		492,650
	Misc		5,000			-	
	New Grant Truck EV-(1/2 to streets) total grant 300k		-			300,000	
	Storage Container & Rear Lot Improvements 1/2 streets		-			12,500	
	Equipment # 309 - Concrete Mixer FY 29 1/2 streets		-			-	
	PW OFFICE HEATING AND AIR CONDITING MINI SPLITS 1/2 streets		-			20,000	
	Scissor Lift - FYE 28 1/2 streets		-			-	
	2 laptops - 1 for Arborist & 1 for Concrete Liasion 1Repl 1 New 1/2 streets		2,500			-	
	206 - Trackless Tractor FYE 29		-			-	
	208 - Trackless Tractor FYE 29		-			-	
	Truck 401-F-550 Replacement		-			135,000	
	Partner Cut-Off Saw		-			2,150	
	Hydro Seeder/Trailer Replacement 1/2 streets		-			23,000	
		Total	7,500			492,650	
50-4880	WATER METERS				12,500		-
	Meters-General		5,000			-	
	Hydrant Meters		7,500			-	
		Total	12,500			-	
TRANSFERS							
50-4251	SERVICE CHARGE				350,000		-
DEBT RETIRE							
50-4945	DEBT RETIRE				388,700		-
	2018 Bond		388,700			-	
		Total	388,700			-	
		Total			8,790,557		1,117,535

CITY OF DARIEN

SPECIAL REVENUE FUNDS BUDGET FISCAL YEAR May 1, 2026 – April 30, 2027

**MOTOR FUEL TAX FUND BUDGET
SPECIAL SERVICE AREA #1 BUDGET**

SPECIAL REVENUE FUNDS

Special Revenue Funds are used to account for revenues derived from specific taxes or other earmarked sources. They are required by state statute or local ordinances to finance specific functions or activities of the City. Seven funds are included in this portion of the budget.

MOTOR FUEL TAX FUND - The Motor Fuel Tax (MFT) Fund accounts for receipts and expenditures of MFT payments from the State. These funds can be used for limited specified purposes. The City's expenditures are for supplies (salt, pipe, signs, asphalt), tree maintenance, street lights (energy cost and new lights), sidewalk program, street sweeping, and to fund the City's annual street rehabilitation program. A list of streets included in this year's program is attached to the MFT budget.

SPECIAL SERVICE AREA #1 - A special service area (SSA) is created to fund improvements which benefit an identifiable segment of the City, with a special property tax levied on the benefited properties. SSA #1 was created to handle maintenance of the wetlands in the Tara Hill development. The developer agreed to continue maintenance of the wetlands for five years while the SSA Fund built up some reserves.

City of Darien

3/6/2026

MOTOR FUEL TAX BUDGET FISCAL YEAR 2027

ACCOUNT	FYE 25 ACTUAL	FYE 26 BUDGET	FYE 26 ESTIMATED ACTUAL	FYE 27 REQUEST	DEPT MAINT BUDGET REQUEST	COUNCIL DISCRETIONARY EXPENDITURES	FYE 28 FORECAST	FYE 29 FORECAST
REVENUE								
MFT Allotment	\$ 994,867	\$ 946,473	\$ 968,484	\$ 946,473	\$ 946,473	\$ -	\$ 946,473	\$ 946,473
Misc. Income (Rebuild IL)	\$ -	\$ -	\$ -	\$ -	\$ -	\$ -	\$ -	\$ -
Interest	\$ 34,466	\$ 22,000	\$ 17,380	\$ 17,000	\$ 17,000	\$ -	\$ 15,000	\$ 15,000
TOTAL REVENUES	\$ 1,029,333	\$ 968,473	\$ 985,864	\$ 963,473	\$ 963,473	\$ -	\$ 961,473	\$ 961,473
EXPENDITURES								
OPERATING								
Salaries	\$ 276,030	\$ 335,000	\$ 335,000	\$ 275,000	\$ 275,000	\$ -	\$ 275,000	\$ 275,000
Overtime	\$ 21,949	\$ 50,000	\$ 50,000	\$ 50,000	\$ 50,000	\$ -	\$ 50,000	\$ 50,000
Social Security	\$ 18,475	\$ 20,770	\$ 18,475	\$ 17,050	\$ 17,050	\$ -	\$ 17,050	\$ 17,050
Medicare	\$ 4,321	\$ 4,858	\$ 4,321	\$ 3,988	\$ 3,988	\$ -	\$ 3,988	\$ 3,988
IMRF	\$ 16,851	\$ 16,072	\$ 16,851	\$ 16,072	\$ 16,072	\$ -	\$ 16,072	\$ 16,072
Road Material	\$ 112,144	\$ 185,000	\$ 185,000	\$ 173,000	\$ 173,000	\$ -	\$ 173,500	\$ 178,000
Salt	\$ 82,684	\$ 111,562	\$ 112,000	\$ 184,893	\$ 184,893	\$ -	\$ 177,693	\$ 177,693
Supplies - Other	\$ 20,037	\$ 18,500	\$ 18,500	\$ 18,500	\$ 18,500	\$ -	\$ 18,500	\$ 18,500
SUB-TOTAL	\$ 552,491	\$ 741,762	\$ 740,147	\$ 738,503	\$ 738,503	\$ -	\$ 731,803	\$ 736,303
CONTRACTUAL								
Pavement Striping	\$ -	\$ 16,000	\$ 17,000	\$ 16,000	\$ 16,000	\$ -	\$ 16,000	\$ 16,000
Tree Trim/Removal	\$ 1,710	\$ 19,000	\$ 19,000	\$ 19,000	\$ 19,000	\$ -	\$ 19,000	\$ 19,000
SUB-TOTAL	\$ 1,710	\$ 35,000	\$ 36,000	\$ 35,000	\$ 35,000	\$ -	\$ 35,000	\$ 35,000
CAPITAL OUTLAY								
Street Lights	\$ 26,924	\$ 20,000	\$ 17,000	\$ 20,000	\$ 20,000	\$ -	\$ 20,000	\$ 20,000
Street Maintenance	\$ 1,535,260	\$ -	\$ -	\$ -	\$ -	\$ -	\$ -	\$ -
SUB-TOTAL	\$ 1,562,183	\$ 20,000	\$ 17,000	\$ 20,000	\$ 20,000	\$ -	\$ 20,000	\$ 20,000
TOTAL EXPENDITURES	\$ 2,116,385	\$ 796,762	\$ 793,147	\$ 793,503	\$ 793,503	\$ -	\$ 786,803	\$ 791,303
FISCAL YEAR BALANCE	\$ (1,087,052)	\$ 171,711	\$ 192,717	\$ 169,971	\$ 169,971	\$ -	\$ 174,671	\$ 170,171
BEGINNING FUND BALANCE	\$ 1,687,007	\$ 352,749	\$ 599,955	\$ 792,673	\$ 792,673	\$ 792,673	\$ 962,643	\$ 1,137,314
ENDING FUND BALANCE	\$ 599,955	\$ 524,460	\$ 792,673	\$ 962,643	\$ 962,643	\$ 792,673	\$ 1,137,314	\$ 1,307,484

2027 BUDGET SUMMARY

	Maintenance	Discretionary
SALARIES	\$ 325,000	\$ -
BENEFITS	\$ 37,110	\$ -
OPERATING COSTS	\$ 376,393	\$ -
CONTRACTUAL	\$ 35,000	\$ -
CAPITAL	\$ 20,000	\$ -
TOTAL	<u>\$ 793,503</u>	<u>\$ -</u>

Account #	Description	Department Maintenance Budget Request	City Council Discretionary Expenditures
SALARIES			
60-4010	SALARY	275,000	-
	Salary - 245k from streets	245,000	
	Seasonal	30,000	
	Total	275,000	
60-4030	OVERTIME	50,000	-
BENEFITS			
60-4110	SOCIAL SECURITY	17,050	-
60-4111	MEDICARE	3,988	-
60-4115	IMRF	16,072	-
OPERATING COSTS			
60-4245	ROAD MATERIAL	173,000	-
	Crack Seal	123,000	-
	Aggregate CA-6 CA-7	35,000	-
	Hot Bituminous Products (FYE27)	7,500	-
	Cold Bituminous Products (FYE27)	7,500	-
	Total	173,000	-
60-4249	SALT	184,893	-
	Rock Salt	162,693	-
	Bio Melt Salt Treatment	-	-
	Forecast Contingency to be Colder (FYE27/FYE28)	22,200	-
	Total	184,893	-
60-4257	SUPPLIES - OTHER	18,500	-
	Culvert Pipes, Storm Sewer, Etc	18,500	-
	Total	18,500	-
CONTRACTUAL SERVICES			
60-4261	PAVEMENT STRIPING	16,000	-
	General Striping	16,000	-
	Total	16,000	-
60-4375	Tree Trimming - Removal	19,000	-
	Tree Removals	19,000	-
	Total	19,000	-
CAPITAL PURCHASES			
60-4840	Street Lights	20,000	-
	Street Lights - Traffic Signals-Energy	20,000	-
	Total	20,000	-
	Total	<u>793,503</u>	<u>-</u>

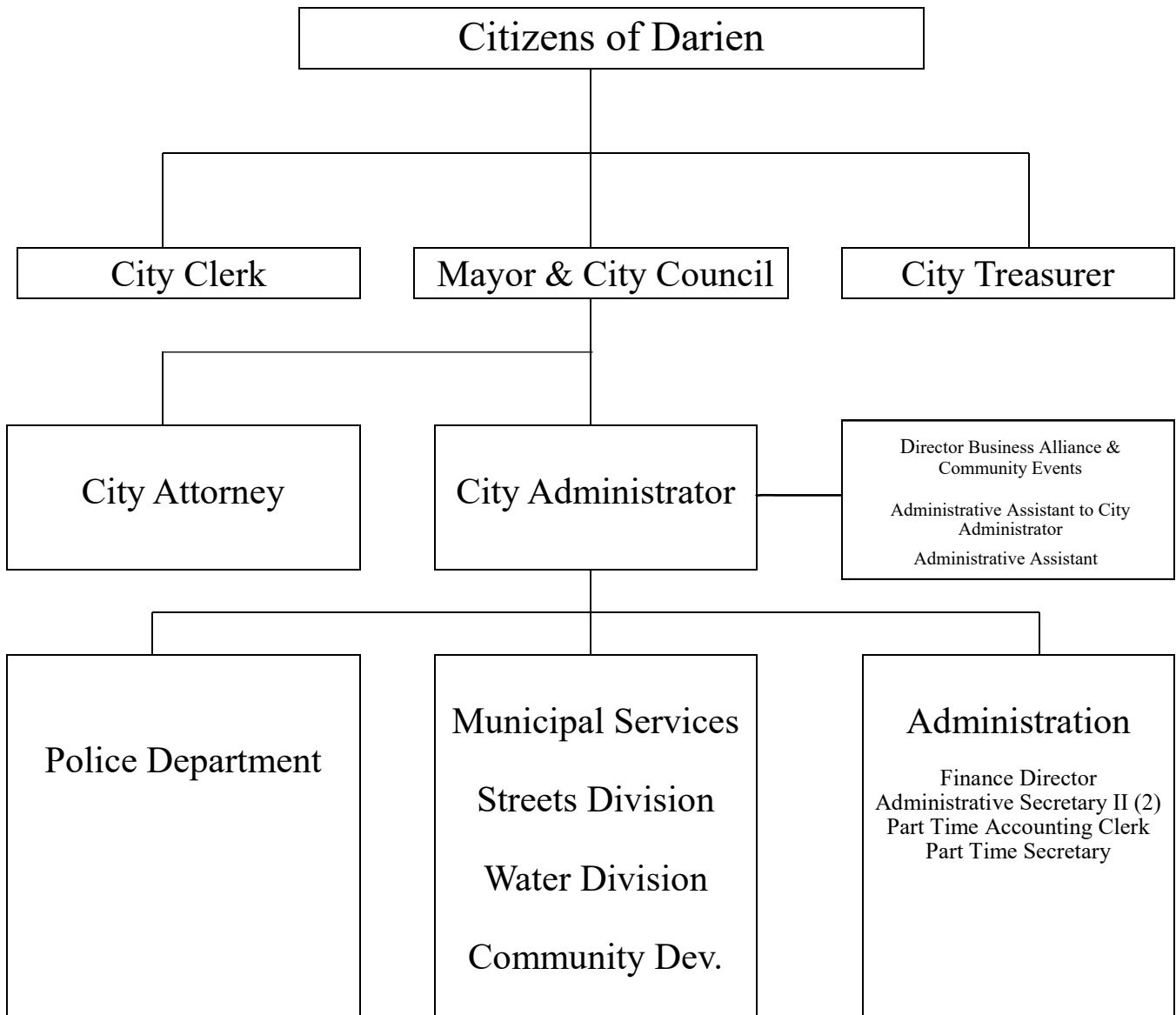
City of Darien

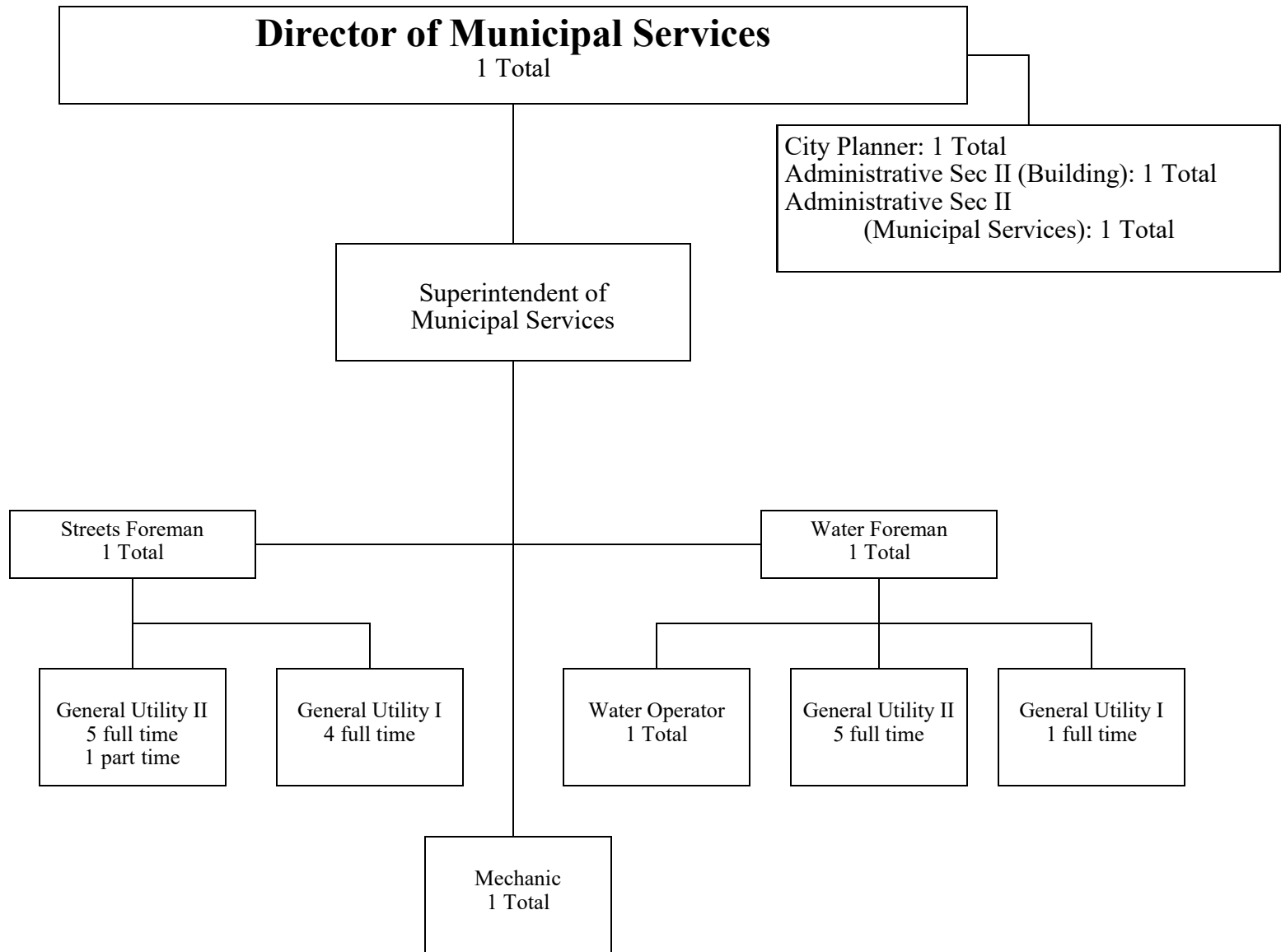
3/6/2026

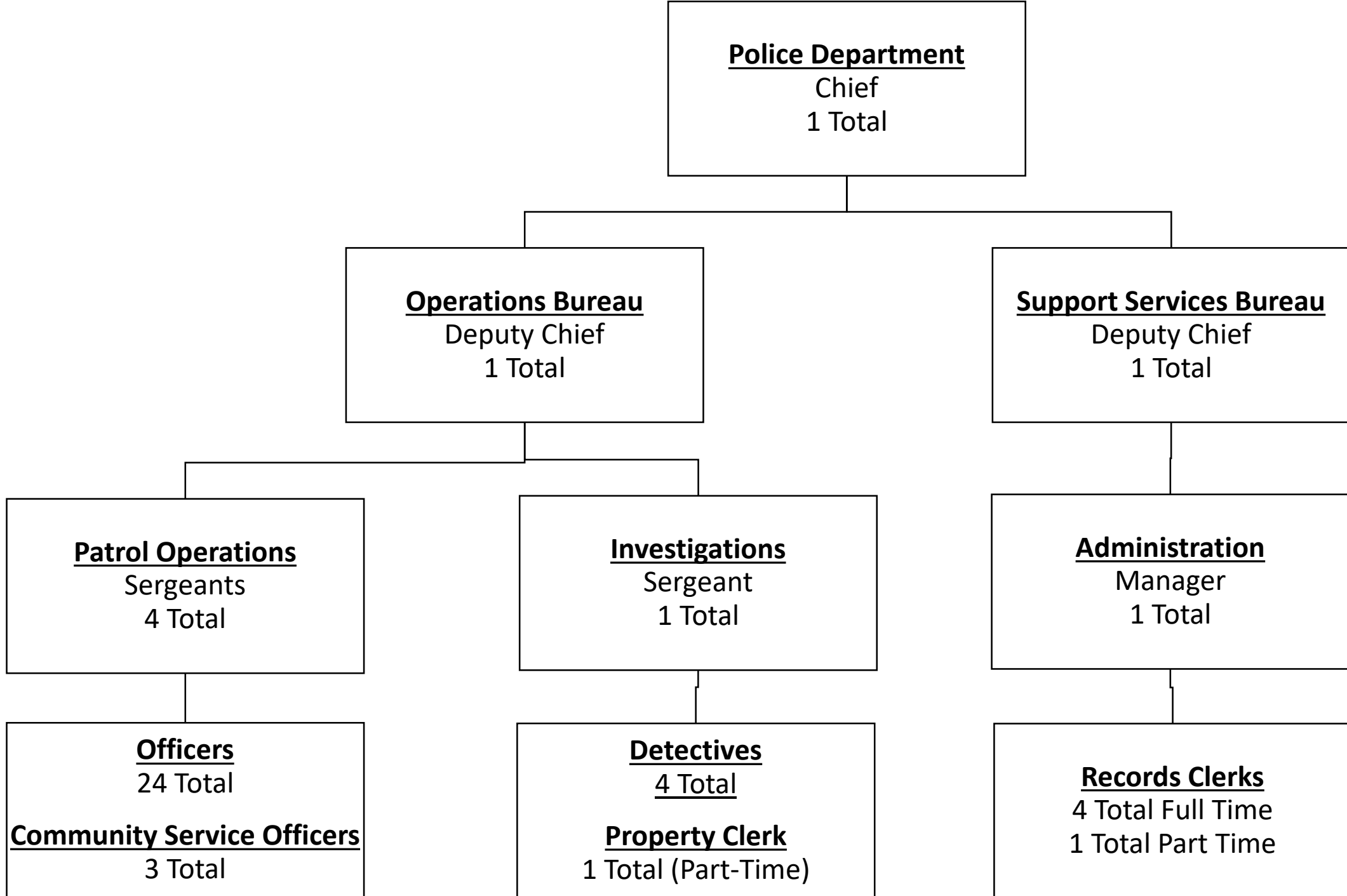
SPECIAL SERVICE AREA #1 FUND BUDGET FISCAL YEAR 2027

ACCOUNT	FYE 25 ACTUAL	FYE 26 BUDGET	FYE 26 ESTIMATED ACTUAL	FYE 27 REQUEST	DEPT MAINT BUDGET REQUEST	COUNCIL DISCRETIONARY EXPENDITURES	FYE 28 FORECAST	FYE 29 FORECAST
REVENUE								
Property Taxes	\$ 5,000	\$ 5,000	\$ 5,000	\$ 5,000	\$ 5,000	\$ -	\$ 5,000	\$ 5,000
Interest	\$ 973	\$ 300	\$ 500	\$ 300	\$ 300	\$ -	\$ 300	\$ 200
TOTAL REVENUES	\$ 5,973	\$ 5,300	\$ 5,500	\$ 5,300	\$ 5,300	\$ -	\$ 5,300	\$ 5,200
EXPENDITURES								
Professional Service	\$ 4,166	\$ 5,500	\$ 1,000	\$ 21,230	\$ 21,230	\$ -	\$ 5,500	\$ 5,500
General Maintenance	\$ -	\$ 500	\$ 500	\$ 500	\$ 500	\$ -	\$ 500	\$ 500
Maintenance	\$ -	\$ 1,000	\$ 1,000	\$ 1,000	\$ 1,000	\$ -	\$ 1,000	\$ 1,000
Contingency	\$ -	\$ 2,000	\$ -	\$ 2,000	\$ 2,000	\$ -	\$ 1,500	\$ 1,500
TOTAL EXPENDITURES	\$ 4,166	\$ 9,000	\$ 2,500	\$ 24,730	\$ 24,730	\$ -	\$ 9,000	\$ 9,000
FISCAL YEAR BALANCE	\$ 1,807	\$ (3,700)	\$ 3,000	\$ (19,430)	\$ (19,430)	\$ -	\$ (3,700)	\$ (3,800)
BEGINNING FUND BALANCE	\$ 22,847	\$ 19,347	\$ 24,654	\$ 27,654	\$ 27,654	\$ -	\$ 8,224	\$ 4,524
ENDING FUND BALANCE	\$ 24,654	\$ 15,647	\$ 27,654	\$ 8,224	\$ 8,224	\$ -	\$ 4,524	\$ 724

City of Darien Organizational Chart









City of Darien Staffing Levels FYE 2026 & 2027

	FYE 26	FYE 27
Administration	6	7.5
City Administrator	1	1
Administrative Assistant to City Administrator	1	1
Director of Finance	0	1
Administrative Assistant	0	1
Administrative Secretary II	2	2
Director, Business Alliance and Community Events	1	1
Part Time Accounting Clerk	0	.5
Part Time Office Clerk	1	1
Community Development	3	3
Director of Municipal Services	1	1
City Planner	1	1
Administrative Secretary II	1	1
Police Department	46	46
Chief of Police	1	1
Deputy Chief	1	2
Sergeants	5	5
Patrol Officer	29	28
Administrative Manager	1	1
Records Clerks	4	4
Property Handler	1	1
Part-time CSO	3	3
Part Time Records Clerk	1	1

	FYE 26	FYE 27
Municipal Services	32	32
Streets	23	23
Superintendent	0.5	0.5
Administrative Secretary II	0.5	0.5
Mechanic	1	1
Foreman	1	1
General Utility I	4	4
General Utility II	5	5
General Utility III	0	0
Seasonal Summer	10	10
Regular Part-time	1	1
Water	9	9
Superintendent	0.5	0.5
Administrative Secretary II	0.5	0.5
Foreman	1	1
General Utility I	1	1
General Utility II	5	5
Water Operator	1	1

**CITY OF DARIEN
PAY RANGES AND JOB CLASSIFICATIONS
FISCAL YEAR ENDING 2027**

PAY RANGE	SALARY	CLASSIFICATION
*2.5% increase from FYE 2026		
** Performance bonus of up to \$3150 for a full time employee		
*** Health insurance premiums 20%		
2	\$38,163 – 51,520	CSO
3	\$42,289 – 57,093	
4	\$46,414 – 62,659	Administrative Sec. I
5	\$49,895 – 67,359	
6	\$54,780 – 73,953	Administrative Sec. II Accounting Clerk
7	\$58,617 – 80,334	Property/Evidence Handler; Administrative Assistant
8	\$60,212 – 81,286	
9	\$67,049 – 90,517	Accountant; Director DBA/Community Development
10	\$72,668 – 98,102	
11	\$76,507 – 103,284	Police Administrative Manager; Assistant to City Administrator
12	\$79,428 – 107,228	
13	\$83,556 – 112,801	City Planner; Foreman
14	\$87,684 – 118,373	Accounting Manager
15	\$92,913 – 125,432	Assistant City Administrator
16	\$95,938 – 129,516	
17	\$100,067 – 135,091	
19	\$108,316 - 146,228	PW Superintendent
20	\$118,284 - 159,684	
22	\$122,503 – 164,879	Deputy Chief, Finance Director
23	\$132,306 – 178,614	Director Municipal Services Police Chief

CITY OF DARIEN

Pay Range and Step Schedule - Fiscal Year Ending 2027

CLASS	STEPS							
	Start	1	2	3	4	5	6	Top
2	38,163	40,071	41,979	43,887	45,796	47,704	49,612	51,520
3	42,289	44,405	46,520	48,633	50,749	52,863	54,977	57,093
4	46,414	48,736	51,056	53,376	55,696	58,018	60,339	62,659
5	49,895	52,391	54,885	57,380	59,874	62,369	64,864	67,359
6	54,780	57,519	60,258	62,997	65,735	68,474	71,214	73,953
7	58,617	61,719	64,821	67,924	71,026	74,129	77,232	80,334
8	60,212	63,222	66,232	69,244	72,253	75,265	78,275	81,286
9	67,049	70,402	73,755	77,108	80,460	83,812	87,164	90,517
10	72,668	76,302	79,935	83,569	87,202	90,834	94,469	98,102
11	76,507	80,332	84,158	87,983	91,808	95,634	99,459	103,284
12	79,428	83,400	87,371	91,343	95,314	99,286	103,256	107,228
13	83,556	87,735	91,912	96,091	100,269	104,445	108,624	112,801
14	87,684	92,069	96,453	100,836	105,221	109,605	113,988	118,373
15	92,913	97,558	102,204	106,850	111,495	116,142	120,787	125,432
16	95,938	100,734	105,531	110,328	115,125	119,922	124,719	129,516
17	100,067	105,070	110,074	115,077	120,080	125,083	130,087	135,091
19	108,316	113,732	119,148	124,563	129,979	135,395	140,811	146,228
20	118,284	124,197	130,112	136,027	141,941	147,854	153,768	159,684
22	122,503	128,557	134,610	140,664	146,719	152,772	158,826	164,879
23	132,306	138,922	145,538	152,154	158,769	165,384	171,999	178,614