

# Darien Police Department

## Monthly Report



June 2025

## Supervisory Development

The state requires a number of certifications and training for personnel. The requirements placed on us includes specific training for supervisors. All our supervisors have had the required training as an officer (Crisis Intervention, CPR, Use of Force, etc.) and requirements of a sergeant that includes National Incident Management System (NIMS), Incident Command System (ICS) and others. There are many more classes that are not required for certification, but as a police department feel they are important such as supervision, management, leadership etc.

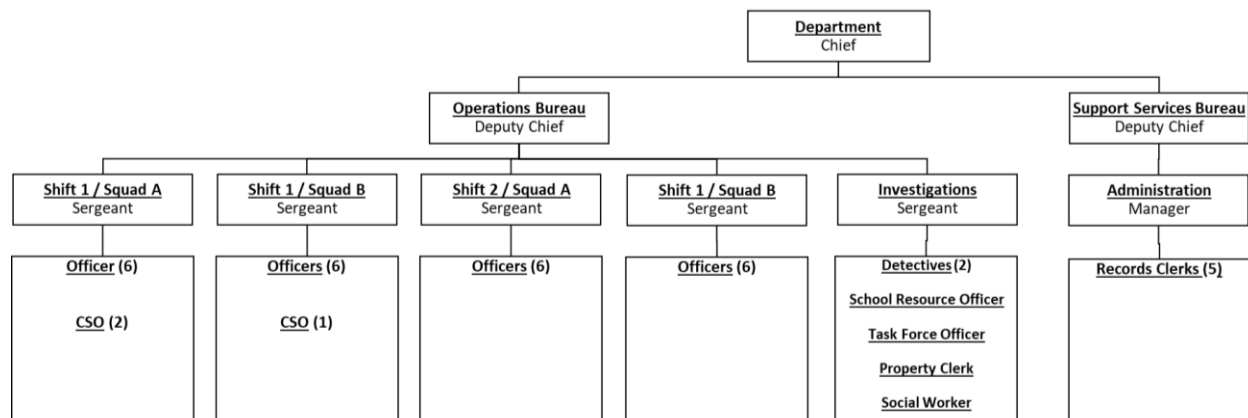
Recently Sergeant Doug Rumick graduated from Northwestern University Center for Public Safety (NUCPS) prestigious School of Police Staff and Command (SPSC). NUCPS literature states, students who successfully complete SPSC are better prepared to:

- Think globally rather than remain task-oriented;
- Deliver services effectively and efficiently;
- Successfully accomplish team-oriented projects and tasks;
- Analyze the environment;
- Mitigate legal exposure; and,
- Develop systems of accountability.

We believe this is true and all supervisors and deputy chiefs have attended this training.

## Organizational Change

In May the City Council approved a second deputy chief position. The new organizational chart is:



Because of the change, the Deputy Chief of Operations can concentrate more of his energies to crime, crashes, concerns, calls for services and community outreach. By this change we believe we will be able to deliver even better services to the community. The new deputy chief of operations is Austin Jump and he will have two divisions that he will lead / manage the patrol services division and the investigative services division.

Deputy Chief Norton will move from operations and take over the new bureau, the Support Services Bureau. There are two divisions within the Support Services Bureau, Central Services and Administrative services. The responsibilities assigned under the umbrella of central services include:

- Building & Grounds
- Fleet Management
- Equipment
- Technology
- Forms Management
- Manual Control
- Internal Affairs
- Training

The responsibilities assigned under the umbrella of administrative services include:

- Records Management
- LEADS
- FOIA
- Document Storage
- Compliance Reports
- Supplies
- Accounts Payable

## **Selection Process Used for Deputy Chief**

To make the selection of deputy chief I first made notification to sergeants that a new deputy chief is going to be established. If any sergeant was interested and met the qualifications, training, experience, certifications any qualifying sergeant could apply. Three of four qualifying sergeants applied. A 360 review was done where officers and non-sworn staff, peers and supervisors rated the candidates. An interview was conducted by the deputy chief, a deputy chief from another agency and a member of the community. The candidates' performance was reviewed and the selection based on above factors.

## Person Crime Summary

Offense	YTD 2025	YTD 2024	YTD 2020	1 Year % Change	5 Year % Change	Offenses Cleared	2025 % Cleared	Rate Per 100,000
<b><u>Homicide Offenses</u></b>	<b>0</b>	<b>0</b>	<b>0</b>	<b>0.0%</b>	<b>0.0%</b>	<b>0</b>	<b>0.0%</b>	<b>0.0</b>
Murder & Non-Negligent Manslaughter	0	0	0	0.0%	0.0%	0	0.0%	0.0
Negligent Manslaughter	0	0	0	0.0%	0.0%	0	0.0%	0.0
Justifiable Homicide (NOT A CRIME)	0	0	0	0.0%	0.0%	0	0.0%	0.0
<b><u>Non-Consensual Sex Offenses</u></b>	<b>3</b>	<b>3</b>	<b>2</b>	<b>0.0%</b>	<b>50.0%</b>	<b>0</b>	<b>0.0%</b>	<b>13.8</b>
Forcible Rape	1	2	2	-50.0%	-50.0%	0	-50.0%	4.6
Forcible Sodomy	0	0	0	0.0%	0.0%	0	0.0%	0.0
Sexual Assault with an Object	0	0	0	0.0%	0.0%	0	0.0%	0.0
Forcible Fondling	2	1	0	100.0%	0.0%	0	0.0%	9.2
<b><u>Assault Offenses</u></b>	<b>79</b>	<b>70</b>	<b>50</b>	<b>12.9%</b>	<b>58.0%</b>	<b>21</b>	<b>26.6%</b>	<b>364.1</b>
Aggravated Assault	0	3	2	-100.0%	-100.0%	0	0.0%	0.0
Simple Assault	69	53	37	30.2%	86.5%	19	1.3%	318.0
Intimidation	10	14	11	-28.6%	-9.1%	2	-0.9%	46.1
<b><u>Kidnapping</u></b>	<b>0</b>	<b>0</b>	<b>1</b>	<b>0.0%</b>	<b>-100.0%</b>	<b>0</b>	<b>0.0%</b>	<b>0.0</b>
<b><u>Non-Forcible Sex Offenses</u></b>	<b>0</b>	<b>0</b>	<b>1</b>	<b>0.0%</b>	<b>-100.0%</b>	<b>0</b>	<b>0.0%</b>	<b>0.0</b>
Incest	0	0	0	0.0%	0.0%	0	0.0%	0.0
Statutory Rape	0	0	1	0.0%	-100.0%	0	0.0%	0.0
<b><u>Human Trafficking Offenses</u></b>	<b>0</b>	<b>0</b>	<b>0</b>	<b>0.0%</b>	<b>0.0%</b>	<b>0</b>	<b>0.0%</b>	<b>0.0</b>
Commercial Sex Acts	0	0	0	0.0%	0.0%	0	0.0%	0.0
Involuntary Servitude	0	0	0	0.0%	0.0%	0	0.0%	0.0
<b>Crimes Against Persons Total</b>	<b>82</b>	<b>73</b>	<b>54</b>	<b>12.3%</b>	<b>51.9%</b>	<b>21</b>	<b>25.6%</b>	<b>377.9</b>

## Property Crime Summary

Offense	YTD 2025	YTD 2024	YTD 2020	1 Year % Change	5 Year % Change	Offenses Cleared	2025 % Cleared	Rate Per 100,000
<b>Robbery</b>	0	1	3	-100.0%	-100.0%	0	0.0%	0.0
<b>Burglary</b>	7	9	14	-22.2%	-50.0%	2	28.6%	32.3
<b>Theft Offenses</b>	60	75	101	-20.0%	-40.6%	0	0.0%	276.5
Pocket Picking	0	0	0	0.0%	0.0%	0	0.0%	0.0
Purse Snatching	0	0	0	0.0%	0.0%	0	0.0%	0.0
Retail Theft	23	36	35	-36.1%	-34.3%	9	39.1%	106.0
Theft from Building	0	2	0	-100.0%	0.0%	0	0.0%	0.0
Theft from Coin Operated Machine	0	0	0	0.0%	0.0%	0	0.0%	0.0
Theft from Motor Vehicle	7	9	35	-22.2%	-80.0%	0	0.0%	32.3
Theft of Motor Vehicle Parts	1	0	2	0.0%	-50.0%	0	0.0%	4.6
All other Thefts	29	28	29	3.6%	0.0%	1	3.4%	133.7
<b>Motor Vehicle Theft</b>	4	6	2	-33.3%	100.0%	0	0.0%	18.4
<b>Arson</b>	0	0	0	0.0%	0.0%	0	0.0%	0.0
<b>Destruction of Property</b>	26	15	28	73.3%	-7.1%	6	23.1%	119.8
<b>Forgery</b>	1	3	2	-66.7%	-50.0%	1	100.0%	4.6
<b>Fraud Offense</b>	48	74	73	-35.1%	-34.2%	0	0.0%	221.2
False Pretenses	22	40	5	-45.0%	340.0%	1	4.5%	101.4
Credit Card Fraud	3	2	9	50.0%	-66.7%	0	0.0%	13.8
Impersonation	4	4	59	0.0%	-93.2%	2	50.0%	18.4
Welfare Fraud	0	1	0	-100.0%	0.0%	0	0.0%	0.0
Wire Fraud	0	4	0	-100.0%	0.0%	0	0.0%	0.0
Identity Fraud	19	22	0	-13.6%	0.0%	1	5.3%	87.6
Computer Hacking	0	1	0	-100.0%	0.0%	0	0.0%	0.0
<b>Embezzlement</b>	0	0	0	0.0%	0.0%	0	0.0%	0.0
<b>Extortion</b>	0	1	5	-100.0%	-100.0%	0	0.0%	0.0
<b>Bribery</b>	0	0	0	0.0%	0.0%	0	0.0%	0.0
<b>Stolen Property Offenses</b>	3	0	1	0.0%	200.0%	0	0.0%	13.8
<b>Crimes Against Property Total</b>	<b>149</b>	<b>184</b>	<b>229</b>	<b>-19.0%</b>	<b>-34.9%</b>	<b>9</b>	<b>6.0%</b>	<b>686.7</b>

## Total Person & Property Crimes

Offense	YTD 2025	YTD 2024	YTD 2020	1 Year % Change	5 Year % Change	Offenses Cleared	2025 % Cleared	Rate Per 100,000
Crimes Against Persons Total	82	73	54	12.3%	51.9%	0	0.0%	377.9
Crimes Against Property Total	149	184	51	-19.0%	192.2%	0	0.0%	686.7
<b>Total Person &amp; Property Crimes</b>	<b>231</b>	<b>257</b>	<b>105</b>	<b>-10.1%</b>	<b>120.0%</b>	<b>0</b>	<b>0.0%</b>	<b>1064.6</b>

## Societal Crime Summary

Offense	YTD 2025	YTD 2024	YTD 2020	1 Year % Change	5 Year % Change	Offenses Cleared	2025 % Cleared	Rate Per 100,000
Drug Violations	16	18	20	-11.1%	-20.0%	5	31.3%	73.7
Drug Equipment Violations	1	1	0	0.0%	0.0%	0	0.0%	4.6
Gambling Offenses	0	0	0	0.0%	0.0%	0	0.0%	0.0
Pornography	0	0	3	0.0%	-100.0%	0	0.0%	0.0
Prostitution	0	0	0	0.0%	0.0%	0	0.0%	0.0
Weapons Law Violation	9	3	3	200.0%	200.0%	3	33.3%	41.5
Animal Cruelty	0	2	0	-100.0%	0.0%	0	0.0%	0.0
<b>Crimes Against Society Total</b>	<b>26</b>	<b>24</b>	<b>26</b>	<b>8.3%</b>	<b>0.0%</b>	<b>8</b>	<b>30.8%</b>	<b>119.8</b>
<b>Total Group "A" Offenses</b>	<b>257</b>	<b>281</b>	<b>131</b>	<b>-8.5%</b>	<b>96.2%</b>	<b>8</b>	<b>3.1%</b>	<b>1184.4</b>

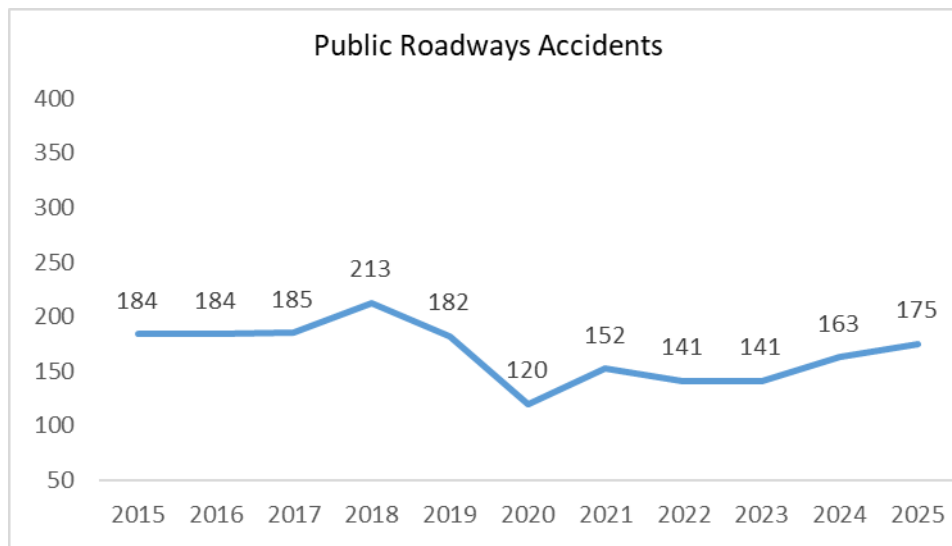
## Other Crime Summary

Offense	YTD 2025	YTD 2024	YTD 2020	1 Year % Change	5 Year % Change	Offenses Cleared	2025 % Cleared	Rate Per 100,000
Bad Checks	0	0	0	0.0%	0.0%	0	0.0%	0.0
Curfew	0	1	0	-100.0%	0.0%	0	0.0%	0.0
Disorderly Conduct	46	47	24	-2.1%	91.7%	8	17.4%	212.0
DUI	31	37	18	-16.2%	72.2%	13	41.9%	142.9
Family Offenses (Non-Violent)	3	1	7	200.0%	-57.1%	1	33.3%	13.8
Liquor Law Violation	9	4	3	125.0%	200.0%	6	66.7%	41.5
Peeping Tom	0	0	0	0.0%	0.0%	0	0.0%	0.0
MRAI	0	0	1	0.0%	-100.0%	0	0.0%	0.0
Trespass	14	7	14	100.0%	0.0%	5	35.7%	64.5
All Other Crimes	63	54	55	16.7%	14.5%	30	47.6%	290.3
<b>Total Group B Offenses</b>	<b>166</b>	<b>151</b>	<b>122</b>	<b>9.9%</b>	<b>36.1%</b>	<b>63</b>	<b>38.0%</b>	<b>765.0</b>

## Traffic Crash Summary

	YTD 2025	YTD 2024	YTD 2020	YTD 2015	1 Year Change	5 Year Change	10 Year Change
<b>Private Property</b>	57	81	65	111	-29.6%	-12.3%	94.7%
	YTD 2025	YTD 2024	YTD 2020	YTD 2015	1 Year Change	5 Year Change	10 Year Change
<b>Public Way</b>							
No Injuries	158	133	105	157	18.8%	50.5%	-0.6%
Injury	16	30	14	26	-46.7%	14.3%	62.5%
Fatal	0	0	0	0	0.0%	0.0%	0.0%
<b>Total</b>	<b>174</b>	<b>163</b>	<b>119</b>	<b>183</b>	<b>6.7%</b>	<b>46.2%</b>	<b>5.2%</b>
	YTD 2025	YTD 2024	YTD 2020	YTD 2015	1 Year Change	5 Year Change	10 Year Change
Fatalities	1	0	1	1	0.0%	0.0%	0.0%
Hit & Run	17	26	18	8	-34.6%	-5.6%	-52.9%
DUI	2	0	0	1	0.0%	0.0%	-50.0%

## Year to Date Crashes



# Calls for Service Summary

## Citizen Generated Events (Beat & Hour of Day)

	<u>YTD</u> <u>2025</u>	<u>YTD</u> <u>2024</u>	<u>YTD</u> <u>2020</u>	<u>YTD</u> <u>2015</u>	<u>1 Year</u> <u>Change</u>	<u>5 Year</u> <u>Change</u>	<u>10 Year</u> <u>Change</u>
<b>Location</b>							
Beat 1	22.3%	17.8%	23.5%	31.2%	25.3%	-5.1%	-28.5%
Beat 2	19.8%	17.5%	20.1%	27.7%	13.1%	-1.5%	-28.5%
Beat 3	38.9%	31.4%	33.5%	39.8%	23.9%	16.1%	-2.3%
Out of Town	0.5%	0.3%	0.5%	1.3%	50.0%	-9.4%	-63.1%
<b>Hour of Day</b>							
0600	50	48	54	55	4.2%	-7.4%	-9.1%
0700	93	86	98	102	8.1%	-5.1%	-8.8%
0800	122	139	131	154	-12.2%	-6.9%	-20.8%
0900	141	138	147	178	2.2%	-4.1%	-20.8%
1000	178	170	154	167	4.7%	15.6%	6.6%
1100	173	199	183	240	-13.1%	-5.5%	-27.9%
1200	203	228	190	220	-11.0%	6.8%	-7.7%
1300	199	216	196	246	-7.9%	1.5%	-19.1%
1400	247	233	181	229	6.0%	36.5%	7.9%
1500	227	243	215	266	-6.6%	5.6%	-14.7%
1600	242	229	220	255	5.7%	10.0%	-5.1%
1700	251	216	206	244	16.2%	21.8%	2.9%
<b>Shift 1</b>	<b>2126</b>	<b>2145</b>	<b>1975</b>	<b>2356</b>	<b>-0.9%</b>	<b>7.6%</b>	<b>-9.8%</b>
1800	188	226	219	238	-16.8%	-14.2%	-21.0%
1900	192	187	175	200	2.7%	9.7%	-4.0%
2000	175	137	145	149	27.7%	20.7%	17.4%
2100	148	148	138	143	0.0%	7.2%	3.5%
2200	124	129	109	126	-3.9%	13.8%	-1.6%
2300	94	92	97	85	2.2%	-3.1%	10.6%
0000	72	75	92	61	-4.0%	-21.7%	18.0%
0100	68	62	60	59	9.7%	13.3%	15.3%
0200	57	59	58	46	-3.4%	-1.7%	23.9%
0300	56	48	49	38	16.7%	14.3%	47.4%
0400	41	36	38	29	13.9%	7.9%	41.4%
0500	35	40	57	32	-12.5%	-38.6%	9.4%
<b>Shift 2</b>	<b>1250</b>	<b>1239</b>	<b>1237</b>	<b>1206</b>	<b>0.9%</b>	<b>1.1%</b>	<b>3.6%</b>
<b>Total</b>	<b>3376</b>	<b>3384</b>	<b>3212</b>	<b>3562</b>	<b>-0.2%</b>	<b>5.1%</b>	<b>-5.2%</b>



# Calls for Service Summary

## Officer Initiated Events (Beat & Hour of Day)

	<u>YTD</u> <u>2025</u>	<u>YTD</u> <u>2024</u>	<u>YTD</u> <u>2020</u>	<u>YTD</u> <u>2015</u>	<u>1 Year</u> <u>Change</u>	<u>5 Year</u> <u>Change</u>	<u>10 Year</u> <u>Change</u>
<b>Location</b>							
Beat 1	6.4%	4.4%	11.2%	30.7%	45.5%	-42.9%	-79.2%
Beat 2	5.5%	4.8%	10.7%	33.3%	14.6%	-48.6%	-83.5%
Beat 3	10.5%	9.3%	13.1%	33.8%	12.9%	-19.8%	-68.9%
Out of Town	0.6%	0.4%	0.6%	2.0%	50.0%	0.0%	-70.0%
<b>Hour of Day</b>							
0600	40	60	59	387	-33.3%	-32.2%	-89.7%
0700	116	149	129	753	-22.1%	-10.1%	-84.6%
0800	149	201	179	1356	-25.9%	-16.8%	-89.0%
0900	172	211	185	1138	-18.5%	-7.0%	-84.9%
1000	138	189	167	1004	-27.0%	-17.4%	-86.3%
1100	161	166	132	831	-3.0%	22.0%	-80.6%
1200	122	177	108	581	-31.1%	13.0%	-79.0%
1300	114	106	149	553	7.5%	-23.5%	-79.4%
1400	102	144	92	434	-29.2%	10.9%	-76.5%
1500	102	138	119	406	-26.1%	-14.3%	-74.9%
1600	64	98	185	1036	-34.7%	-65.4%	-93.8%
1700	74	134	132	903	-44.8%	-43.9%	-91.8%
<b>Shift 1</b>	<b>1354</b>	<b>1773</b>	<b>1636</b>	<b>9382</b>	<b>-23.6%</b>	<b>-17.2%</b>	<b>-85.6%</b>
1800	117	132	106	834	-11.4%	10.4%	-86.0%
1900	175	183	80	714	-4.4%	118.8%	-75.5%
2000	151	168	84	645	-10.1%	79.8%	-76.6%
2100	148	157	105	772	-5.7%	41.0%	-80.8%
2200	166	189	50	531	-12.2%	232.0%	-68.7%
2300	145	163	192	331	-11.0%	-24.5%	-56.2%
0000	101	125	315	1204	-19.2%	-67.9%	-91.6%
0100	131	101	221	989	29.7%	-40.7%	-86.8%
0200	81	79	197	906	2.5%	-58.9%	-91.1%
0300	52	62	123	716	-16.1%	-57.7%	-92.7%
0400	43	24	102	538	79.2%	-57.8%	-92.0%
0500	15	26	60	522	-42.3%	-75.0%	-97.1%
<b>Shift 2</b>	<b>1325</b>	<b>1409</b>	<b>1635</b>	<b>8702</b>	<b>-6.0%</b>	<b>-19.0%</b>	<b>-84.8%</b>
<b>Total</b>	<b>2679</b>	<b>3182</b>	<b>3271</b>	<b>18084</b>	<b>-15.8%</b>	<b>-18.1%</b>	<b>-85.2%</b>

# Traffic Enforcement Summary

There was an issue with the traffic citation data so this month's summary on traffic enforcement is not available.

## Citizen Concern Summary

<u>Location</u>	<u>Issue</u>	<u>Dates Monitored</u>	<u>Police Response</u>
Farmingdale Drive 75 <sup>th</sup> Street to 79 <sup>th</sup> Street	Speeding	1/10/25 - 1/24/25	25 Observations / 534 Minutes 3 Warnings / 0 Citations
71 <sup>st</sup> Street 400 Block	Speeding	1/30/25 - 2/28/25	20 Observations / 534 Minutes 4 Warnings / 2 Citations
Adams Street 7500 Block	Speeding	3/10/25 - 3/19/25	20 Observations / 457 Minutes 0 Citations / 0 Warnings
69 <sup>th</sup> Street Wilmette Ave	Illegal Passing	3/24/25 - 4/18/25	4 Observations / 70 Minutes 0 Citations / 1 Warnings
1019 Concord Pl	Illegal Passing	3/27/25 - 4/18/25	4 Observations / 55 Minutes 0 Citations / 0 Warnings
71 <sup>st</sup> Street 1700 Block	Speeding	3/29/25 - 4/12/25	34 Observations / 755 Minutes 1 Citations / 8 Warnings
Bailey Rd Pinehurst Dr-Chapman Dr	Speeding	4/11/25 - 5/1/25	47 Observations / 1,016 Minutes 6 Citations / 22 Warnings
Adams Street 7600 Block	Illegal Passing	4/14/25 - 4/28/25	9 Observations / 150 Minutes 0 Citations / 0 Warnings
7906 Cass Ave	Illegal Passing	4/28/25 - 5/9/25	9 Observations / 100 Minutes 0 Citations / 0 Warnings
Adams Street 7600 Block	Speeding	5/12/25 - 5/26/25	20 Observations / 415 Minutes 1 Citations / 0 Warnings
Woodland Dr and N Frontage Rd	Illegal Passing	5/23/25 - 5/30/25	5 Observations / 130 Minutes 0 Citations / 0 Warnings
Nantucket Dr- Walnut Dr and Andermann Ln	Speeding	6/2/25 - 6/6/25	20 Observations / 393 Minutes 3 Citations / 2 Warnings
7800 Regency Grove Dr	Speeding	6/9/25 - 6/23/25	15 Observations / 260 Minutes 0 Citations / 0 Warnings
Hinswood Dr and Sweetwater Ct	Speeding	6/11/25 - 6/20/25	18 Observations / 300 Minutes 1 Citations / 0 Warnings
Ripple Ridge and Mystic Trace	Speeding	6/11/25 – 6/20/25	19 Observations / 334 Minutes 0 Citations / 0 Warnings