

Darien Police Department

Monthly Report



March 2025

Sexual Assault Awareness Month

Sexual Assault Awareness Month is an annual campaign to raise public awareness about sexual assault and educate communities and individuals on how to prevent sexual violence in the United States. It is observed in April. Each year during the month of April, state, territory, tribal and community-based organizations, rape crisis centers, government agencies, businesses, campuses and individuals plan events and activities to highlight sexual violence as a public health, human rights and social justice issue and reinforce the need for prevention efforts.

Prescription Drug Take Back Day

The National Prescription Drug Take Back Day is scheduled for Saturday, April 26, 2025. This event provides a safe and anonymous way to dispose of unused or expired medications at designated collection sites across the country.

The Darien Police Department allows people to drop off prescription drugs throughout the year when the lobby is open. There is a drug box. As indicated in the annual reports hundreds of pounds have been turned in.

Text-to-911

DuPage County Launches Text to 9-1-1. Our 9-1-1 Center, DuComm, is participating. The 9-1-1 centers want you to remember:

Call if you can, text if you can't.

Darien now has the ability to send a text to 9-1-1 dispatchers for emergencies, joining other helpline providers with texting services to 988 for Crisis Intervention and Suicide Support and 211 for health and social service resources.

If you have a choice between calling or texting 9-1-1 centers throughout DuPage County, please “call if you can and text if you can’t.” Calling is better than texting because emergency dispatchers can get more immediate answers to questions from callers, listen for distress in voices, and learn background information that could assist first responders in a potentially life-threatening emergency.

The Text-to-911 service will greatly assist the deaf community, in particular, as well as those who may be in a domestic violence situation, are hiding, or simply cannot make a phone call.

Text-to-911 works on cell phones, tablets and other devices with the capability of sending texts using AT&T, Verizon, and T-Mobile. Text-to-911 does not currently receive pictures or video.

Text-to-911 service is subject to cell signal availability – another reason why those attempting to contact 9-1-1 should call when they can and text when they can't. In the event a text does not go through, the person attempting to use Text-to-911 should receive an automated bounce-back message indicating the text's failure to be delivered.

For more information on DuPage County Text-to-911, please visit:

https://www.dupagecounty.gov/government/departments/etsb/text_to_911.php

Here is a few more things to keep in mind:

- Do not text and drive.
- Keep text messages short and do not use abbreviations, slang or emoji's.
- Include the location of your emergency and the type of help needed in your first text.
- Text to 911 is only for emergencies.

Frequently Asked Questions

How do I know if I'm able to text 911?

Verizon, AT&T and T-Mobile/Sprint have taken the necessary steps to allow you to text 911 from your mobile phone. Customers whose carriers utilize one of those three networks and whose calls are being routed to DuComm can use the feature.

How will I know if 911 received my text?

A 911 dispatcher will reply to your text when it is received. If Text to 911 is not available for any reason, you should receive an automatic "bounce-back" message from your wireless carrier stating that Text to 911 is not available and advising you to make a voice call to 911.

Do I need to have a texting plan to send a text message to 911?

Yes. While all wireless phones have the capability to dial 911 regardless of whether that phone is active on a network, you can only send a text to 911 if you use a cell phone that has an active texting plan. Your mobile carrier's regular texting rates will apply.

When should I text 911?

Text to 911 is intended primarily for use in three emergency scenarios:

1. An individual is deaf, hard-of-hearing, or has a speech disability.
2. Someone is in a situation where it is not safe to place a voice call to 911.
3. A medical emergency has rendered the person incapable of speech.

What are the challenges with Text to 911 services?

- As with all text messages, texts sent to 911 may take longer to receive and respond to than a voice call, do not provide the location of the texter, could be received out of order, or may not be received at all.
- Text GPS location information is not equal to current wireless location technology.
- Pictures or videos cannot be received by 911 at this time.

- If you include anyone else on your text to 911 it may not be received by the 911 call center.
- Translation services for Text to 911 are not currently available in DuComm. Please text in English only or make a voice call.

How do I text 911?

- Enter the numbers “911” in the “To” or “Recipient” field.
- The first text to 911 should include the location of the emergency and the type of help needed.
- Push the “Send” button.
- Be prepared to answer questions and follow instructions from the 911 call taker.
- Text in simple words – no abbreviations, slang or emoji’s.
- Keep text messages short.

If I send a text to 911, will the 911 center automatically know my location?

No. Texting 911 is different from making a voice call. When you call 911 from a mobile phone, the call center will usually receive your phone number and approximate location automatically. However, if you text 911, the call taker may not receive your phone number or location. So, regardless if you text or call 911, it is a best practice to provide a correct address or location as quickly as possible.

Can I send the 911 operator a photo or video?

No. At this time, DuComm is not equipped to accept photos or videos attached to a text message. In addition, you should not try to send emoji’s to 911.

Can I try to send a text to 911 to see if Text to 911 works from my phone?

No. Calling 911 when there is no emergency is against the law. The same applies to texting 911. Do not “test” to see if it works. You could tie up resources and prevent someone from receiving the help they need.

Vehicle Laws – Non-Motorized Bicycles

During the discussion of the annual report for 2024 at the April 7 City Council meeting questions arose regarding the use of bicycles, more so motorized bicycles and scooters. Here is a very trimmed down discussion on the law regarding bicycles and scooters. Additionally, some council members discussed wanting an ordinance on the use of electric bicycles and scooters.

Helmets

Because it was asked at the City Council meeting, here is the rule on helmets. Many responsible cyclists wear a protective helmet. Generally, because motor vehicle drivers are not always as attentive or respectful of the cyclists sharing the road with them. However, Illinois law does not require either a cyclist or passenger to wear a safety helmet.

Road Sharing Rules for Cyclists

A pedal-powered bicycle cannot usually match the higher speeds of a car or truck. This means that it is inevitable that some car or truck drivers will perceive a road-sharing cyclist as irritatingly in their way.

For that reason, Illinois law requires cyclists traveling at less than the normal speed of traffic at the time and place and under the conditions to ***ride as close as practicable to the right-hand curb or edge***. As designated bicycle lanes are typically on the rightmost part of a roadway, cyclists should remain within them, if such lanes are available.

Specified exceptions to riding as close to the right as practicable are:

- when overtaking and passing another bike or vehicle going the same way;
- preparing for a lawful left turn;
- necessarily avoiding a moving or nonmoving object;
- traveling on “substandard width” lanes too narrow for a car and bike to travel safely side-by-side within one lane; and
- traveling on a one-way highway with two or more marked lanes, letting the cyclist choose to ride as near the ***left***-hand edge as practicable. (625 ILCS 5/11-1505)

Motorist Safety Mandate

- A driver wishing to pass an e-bike (or pedal-powered bicycle) must do so at a safe distance, but not less than 3 feet between their vehicle and the rider.
- The motor vehicle driver must maintain the 3-foot buffer until they have safely passed the e-bike or bicycle. (625 ILCS 5/11-703(d))

Bicycle Use on Sidewalks

- Barring local ordinances to the contrary – or where a traffic-control device may forbid their use – bicycle riding is generally permitted on Illinois sidewalks. This is because bicyclists have ***all the rights and duties applicable to a pedestrian***. (625 ILCS 5/11-1512(b)(c))
- If a cyclist encounters a pedestrian on foot, that pedestrian has the right-of-way, and the cyclist must yield.
- Before passing a slower-moving pedestrian, a cyclist must give an audible signal so the pedestrian is not startled off their path. (625 ILCS 5/11-1512(a))

Penalties for Bicycle-Related Violations

Since traffic laws apply to persons riding bicycles (625 ILCS 5/11-1502), cyclists are subject to the same penalties faced by someone offending while driving a car or truck.

Vehicle Laws – Motorized Bicycles

Low-Speed Electric Bicycles

An electric bicycle is not statutorily classified as a motor vehicle. Thus, we generally consider them closer to pedal-powered bikes. The provisions of the law that apply to bicycles generally

apply to low-speed electric bicycles." (625 ILCS 5/11-1517(a)) However, local governments may opt to treat them differently.

Illinois law defines an electric bicycle as one equipped with fully operable pedals and an electric motor of less than 750 watts.

The law subdivides e-bikes into three classifications:

- Class 1 (motor assists only when pedaling, and stops at 20 mph);
- Class 2 (motor operates even when not pedaling, and stops at 20 mph); and
- Class 3 (motor assists only when pedaling, and stops at 28 mph).

Specifically excluded from the low-speed electric bicycle definition are Mopeds and Motor Driven Cycles. (625 ILCS 5/1-140.10)

Authority to Create Local Regulations

Bicycle regulations apply statewide, however, Darien may enact other laws (ordnances) that prohibit unwanted behaviors and punishments imposed for those violations. Darien has the power to regulate bicycle operations including regulating low-speed electric bicycles and low-speed gas bicycles. (625 ILCS 5/11-208(a)(8))

Permitted Riding Locations

With one exception, e-bikes can lawfully travel in the same locations as pedal-powered bicycles. This includes highways, streets and roadways. Low-speed electric bicycles are specifically authorized for traveling within bicycle lanes and bicycle paths. (625 ILCS 5/11-1517(e)(f))

Despite the broader authorization for e-bikes traveling in the same locations available to bicycles, the exception is a person may not operate a low-speed electric bicycle on a sidewalk. (625 ILCS 5/11-1517(g))

Age Restriction for Faster E-Bikes

Another legal difference between bicycles and certain types of e-bikes is that faster e-bikes have a minimum age restriction. No one younger than 16 can lawfully ride a **Class 3** electric bicycle – those that can reach 28 mph.

Driver's License & Insurance

A person may operate an electrical bike without needing to obtain or carry a driver's license or proof of insurance.

E-Bike Labeling Requirement

While an electric bicycle does not need to be registered or licensed like a motor vehicle, it does need to include a specific type of label. The specific label must include the e-bike's classification number, top assisted speed and motor wattage.

E-Bikes Enforced Like Traditional Bikes

For many traffic law purposes, an electrical bike traveling at 28 mph, and a traditional bicycle with its training wheels barely removed, are identical. Operators can ride on the very same paths,

sidewalks and streets. Someone in a car wishing to pass, must pass either type of bike at "a safe distance, but not less than 3 feet" between the vehicle and the rider. (625 ILCS 5/11-703(d)) Electric bicyclists get the best of both worlds, the freedom to travel on nearly every pathway, except sidewalks, yet the physical safety buffer devised for slower-moving traffic.

Low-Speed Gas Bicycles

Generally, like electric bicycles, the majority of Illinois laws for bicycles also apply to low-speed **gas** bicycles. (625 ILCS 5/11-1516(d)) However, gas-powered bikes have more operational limitations than e-bikes. To qualify as a low-speed gas bicycle it must:

- have either 2 or 3 wheels
- have fully operable pedals
- operated at speeds less than 20 mph
- powered by a gasoline motor of less than 1 horsepower, or 15 cc displacement. (625 ILCS 5/1-140.15)

Gas Bicycle Age Requirement

To ride any gas bicycle, a rider must be at least 16 years old. This differs from the e-bike regulation, which imposes a minimum age of 16 only for the speedier Class 3 models.

Maximum Speed Limitation

Although most gas-powered bicycles are mechanically capable of driving much faster, in Illinois, a driver must limit their speed on a low-speed gas bicycle to no greater than 20 mph when on a street. (625 ILCS 5/11-1516(b))

Same Sidewalk Prohibition as E-Bikes

While it is legal to drive a gas bicycle on most local roadways a person may not operate a low-speed gas bicycle on a sidewalk. (625 ILCS 5/11-1516(c))

Vehicle Laws – Motorized Scooters

Low-Speed Electric Scooters

To qualify as a low-speed electric scooter, a conveyance must:

- weigh less than 100 pounds
- have either 2 or 3 wheels
- have handlebars and a floorboard that can be stood upon while riding
- powered solely by an electric motor as well as by human power
- not faster than 10 miles per hour

No Title, Registration, or Driver's License Required

Any Illinois resident 18 years or older may own and operate a low-speed electric scooter without obtaining an Illinois driver's license or permit (625 ILCS 5/6-102(9)). A low-speed electric scooter is not a motor vehicle.

Local Rule-Making Authority

Illinois law authorizes several governmental entities to regulate the operation of low-speed electric scooters within their jurisdictions to include the use on sidewalks, trails and other public rights-of-way where the operation of bicycles is permitted. (625 ILCS 5/11-1518(a))

Local E-Scooter Use Must be Affirmatively Authorized

An unusual feature of Illinois' low-speed electric scooter regulations is that their use is only permitted if a municipality or other unit of local government has specifically authorized it within their jurisdiction. Local authorizations only apply to property that the rule-making authority owns, leases, or manages. For example, a park district's regulation permitting low-speed e-scooter usage would not equally apply to downtown city streets. (625 ILCS 5/11-1518(a))

Darien has the authority to pass local ordinances to regulate such devices and prohibit their use in specified locations. (625 ILCS 5/11-1005.1)

Parking Restrictions

Review into the Parking Restriction ordinance 9-3 has been undertaken. At a later time a recommended changes will be presented.

Person Crime Summary

Offense	YTD 2025	YTD 2024	YTD 2020	1 Year % Change	5 Year % Change	Offenses Cleared	2025 % Cleared	Rate Per 100,000
<u>Homicide Offenses</u>	0	0	0	0.0%	0.0%	0	0.0%	0.0
Murder & Non-Negligent Manslaughter	0	0	0	0.0%	0.0%	0	0.0%	0.0
Negligent Manslaughter	0	0	0	0.0%	0.0%	0	0.0%	0.0
Justifiable Homicide (NOT A CRIME)	0	0	0	0.0%	0.0%	0	0.0%	0.0
<u>Non-Consensual Sex Offenses</u>	0	2	1	-100.0%	-100.0%	0	0.0%	0.0
Forcible Rape	0	1	1	-100.0%	-100.0%	0	0.0%	0.0
Forcible Sodomy	0	0	0	0.0%	0.0%	0	0.0%	0.0
Sexual Assault with an Object	0	0	0	0.0%	0.0%	0	0.0%	0.0
Forcible Fondling	0	1	0	-100.0%	0.0%	0	0.0%	0.0
<u>Assault Offenses</u>	44	29	26	51.7%	69.2%	21	47.7%	202.8
Aggravated Assault	0	1	1	-100.0%	-100.0%	0	0.0%	0.0
Simple Assault	37	23	20	60.9%	85.0%	19	2.3%	170.5
Intimidation	7	5	5	40.0%	40.0%	2	5.7%	32.3
<u>Kidnapping</u>	0	0	1	0.0%	-100.0%	0	0.0%	0.0
<u>Non-Forcible Sex Offenses</u>	0	0	1	0.0%	-100.0%	0	0.0%	0.0
Incest	0	0	0	0.0%	0.0%	0	0.0%	0.0
Statutory Rape	0	0	1	0.0%	-100.0%	0	0.0%	0.0
<u>Human Trafficking Offenses</u>	0	0	0	0.0%	0.0%	0	0.0%	0.0
Commercial Sex Acts	0	0	0	0.0%	0.0%	0	0.0%	0.0
Involuntary Servitude	0	0	0	0.0%	0.0%	0	0.0%	0.0
Crimes Against Persons Total	44	31	29	41.9%	51.7%	21	47.7%	202.8

Property Crime Summary

Offense	YTD 2025	YTD 2024	YTD 2020	1 Year % Change	5 Year % Change	Offenses Cleared	2025 % Cleared	Rate Per 100,000
Robbery	0	1	2	-100.0%	-100.0%	0	0.0%	0.0
Burglary	7	7	13	0.0%	-46.2%	2	28.6%	32.3
Theft Offenses	29	39	57	-25.6%	-49.1%	0	0.0%	133.7
Pocket Picking	0	0	0	0.0%	0.0%	0	0.0%	0.0
Purse Snatching	0	0	0	0.0%	0.0%	0	0.0%	0.0
Retail Theft	14	21	17	-33.3%	-17.6%	9	64.3%	64.5
Theft from Building	0	2	0	-100.0%	0.0%	0	0.0%	0.0
Theft from Coin Operated Machine	0	0	0	0.0%	0.0%	0	0.0%	0.0
Theft from Motor Vehicle	5	3	28	66.7%	-82.1%	0	0.0%	23.0
Theft of Motor Vehicle Parts	1	0	2	0.0%	-50.0%	0	0.0%	4.6
All other Thefts	9	13	10	-30.8%	-10.0%	1	11.1%	41.5
Motor Vehicle Theft	1	1	2	0.0%	-50.0%	0	0.0%	4.6
Arson	0	0	0	0.0%	0.0%	0	0.0%	0.0
Destruction of Property	14	5	13	180.0%	7.7%	6	42.9%	64.5
Forgery	1	3	2	-66.7%	-50.0%	1	100.0%	4.6
Fraud Offense	21	36	34	-41.7%	-38.2%	0	0.0%	96.8
False Pretenses	10	21	2	-52.4%	400.0%	1	10.0%	46.1
Credit Card Fraud	1	1	2	0.0%	-50.0%	0	0.0%	4.6
Impersonation	2	0	30	0.0%	-93.3%	2	100.0%	9.2
Welfare Fraud	0	1	0	-100.0%	0.0%	0	0.0%	0.0
Wire Fraud	0	2	0	-100.0%	0.0%	0	0.0%	0.0
Identity Fraud	8	10	0	-20.0%	0.0%	1	12.5%	36.9
Computer Hacking	0	1	0	-100.0%	0.0%	0	0.0%	0.0
Embezzlement	0	0	0	0.0%	0.0%	0	0.0%	0.0
Extortion	0	1	0	-100.0%	0.0%	0	0.0%	0.0
Bribery	0	0	0	0.0%	0.0%	0	0.0%	0.0
Stolen Property Offenses	1	0	1	0.0%	0.0%	0	0.0%	4.6
Crimes Against Property Total	74	93	124	-20.4%	-40.3%	9	12.2%	341.0

Total Person & Property Crimes

Offense	YTD 2025	YTD 2024	YTD 2020	1 Year % Change	5 Year % Change	Offenses Cleared	2025 % Cleared	Rate Per 100,000
Crimes Against Persons Total	44	31	29	41.9%	51.7%	0	0.0%	202.8
Crimes Against Property Total	74	93	51	-20.4%	45.1%	0	0.0%	341.0
Total Person & Property Crimes	118	124	80	-4.8%	47.5%	0	0.0%	543.8

Societal Crime Summary

Offense	YTD 2025	YTD 2024	YTD 2020	1 Year % Change	5 Year % Change	Offenses Cleared	2025 % Cleared	Rate Per 100,000
Drug Violations	6	7	11	-14.3%	-45.5%	5	83.3%	27.7
Drug Equipment Violations	0	0	0	0.0%	0.0%	0	0.0%	0.0
Gambling Offenses	0	0	0	0.0%	0.0%	0	0.0%	0.0
Pornography	0	0	1	0.0%	-100.0%	0	0.0%	0.0
Prostitution	0	0	0	0.0%	0.0%	0	0.0%	0.0
Weapons Law Violation	3	2	2	50.0%	50.0%	3	100.0%	13.8
Animal Cruelty	0	1	0	-100.0%	0.0%	0	0.0%	0.0
Crimes Against Society Total	9	10	14	-10.0%	-35.7%	8	88.9%	41.5
Total Group "A" Offenses	127	134	94	-5.2%	35.1%	8	6.3%	585.3

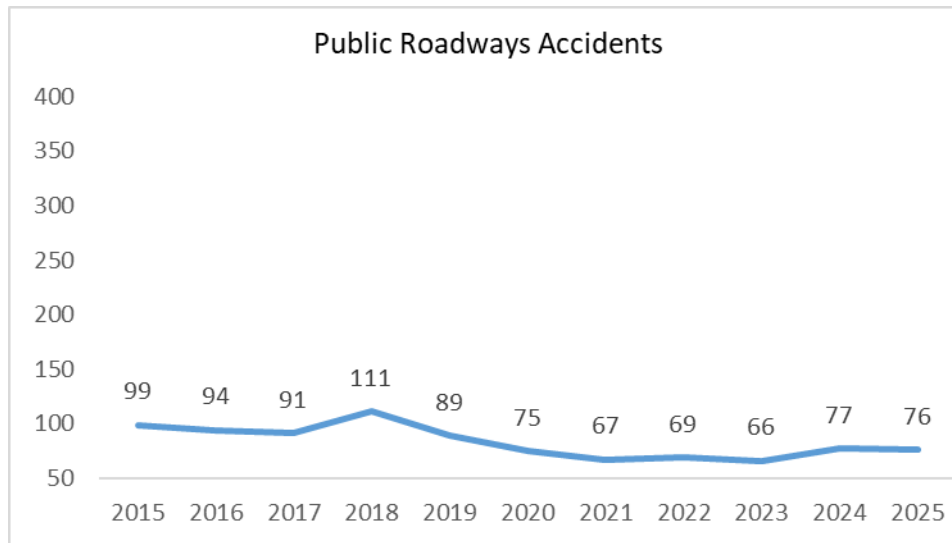
Other Crime Summary

Offense	YTD 2025	YTD 2024	YTD 2020	1 Year % Change	5 Year % Change	Offenses Cleared	2025 % Cleared	Rate Per 100,000
Bad Checks	0	0	0	0.0%	0.0%	0	0.0%	0.0
Curfew	0	1	0	-100.0%	0.0%	0	0.0%	0.0
Disorderly Conduct	26	20	12	30.0%	116.7%	8	30.8%	119.8
DUI	13	13	10	0.0%	30.0%	13	100.0%	59.9
Family Offenses (Non-Violent)	2	1	4	100.0%	-50.0%	1	50.0%	9.2
Liquor Law Violation	6	1	1	500.0%	500.0%	6	100.0%	27.7
Peeping Tom	0	0	0	0.0%	0.0%	0	0.0%	0.0
MRAI	0	0	0	0.0%	0.0%	0	0.0%	0.0
Trespass	7	5	8	40.0%	-12.5%	5	71.4%	32.3
All Other Crimes	32	23	32	39.1%	0.0%	30	93.8%	147.5
Total Group B Offenses	86	64	67	34.4%	28.4%	63	73.3%	396.3

Traffic Crash Summary

	YTD 2025	YTD 2024	YTD 2020	YTD 2015	1 Year Change	5 Year Change	10 Year Change
Private Property	24	41	32	53	-41.5%	-25.0%	120.8%
	YTD 2025	YTD 2024	YTD 2020	YTD 2015	1 Year Change	5 Year Change	10 Year Change
Public Way							
No Injuries	66	64	69	87	3.1%	-4.3%	31.8%
Injury	10	13	6	12	-23.1%	66.7%	20.0%
Fatal	0	0	0	0	0.0%	0.0%	0.0%
Total	76	77	75	99	-1.3%	1.3%	30.3%
	YTD 2025	YTD 2024	YTD 2020	YTD 2015	1 Year Change	5 Year Change	10 Year Change
Fatalities	0	0	0	0	0.0%	0.0%	0.0%
Hit & Run	7	8	8	4	-12.5%	-12.5%	-42.9%
DUI	0	0	0	0	0.0%	0.0%	0.0%

Year to Date Crashes



Calls for Service Summary

Citizen Generated Events (Beat & Hour of Day)

	<u>YTD</u> <u>2025</u>	<u>YTD</u> <u>2024</u>	<u>YTD</u> <u>2020</u>	<u>YTD</u> <u>2015</u>	<u>1 Year</u> <u>Change</u>	<u>5 Year</u> <u>Change</u>	<u>10 Year</u> <u>Change</u>
Location							
Beat 1	21.8%	16.1%	22.0%	29.3%	35.1%	-1.0%	-25.7%
Beat 2	19.8%	17.1%	18.3%	27.2%	15.5%	8.1%	-27.3%
Beat 3	41.07%	31.6%	29.7%	48.0%	0.0%	0.0%	0.0%
Out of Town	0.3%	0.4%	0.5%	1.5%	-15.8%	-34.7%	-77.9%
Hour of Day							
0600	16	26	37	25	-38.5%	-56.8%	-36.0%
0700	43	40	57	51	7.5%	-24.6%	-15.7%
0800	61	66	71	82	-7.6%	-14.1%	-25.6%
0900	68	64	71	79	6.3%	-4.2%	-13.9%
1000	89	79	85	79	12.7%	4.7%	12.7%
1100	74	94	97	125	-21.3%	-23.7%	-40.8%
1200	86	99	99	105	-13.1%	-13.1%	-18.1%
1300	88	116	94	122	-24.1%	-6.4%	-27.9%
1400	108	110	98	101	-1.8%	10.2%	6.9%
1500	108	130	110	128	-16.9%	-1.8%	-15.6%
1600	120	104	128	127	15.4%	-6.3%	-5.5%
1700	107	93	97	115	15.1%	10.3%	-7.0%
Shift 1	968	1021	1044	1139	-5.2%	-7.3%	-15.0%
1800	76	99	109	110	-23.2%	-30.3%	-30.9%
1900	93	82	88	84	13.4%	5.7%	10.7%
2000	72	58	67	63	24.1%	7.5%	14.3%
2100	67	59	64	55	13.6%	4.7%	21.8%
2200	52	60	59	49	-13.3%	-11.9%	6.1%
2300	40	40	49	32	0.0%	-18.4%	25.0%
0000	35	38	39	26	-7.9%	-10.3%	34.6%
0100	31	36	34	29	-13.9%	-8.8%	6.9%
0200	39	34	26	18	14.7%	50.0%	116.7%
0300	32	18	25	21	77.8%	28.0%	52.4%
0400	26	23	16	18	13.0%	62.5%	44.4%
0500	20	19	25	16	5.3%	-20.0%	25.0%
Shift 2	583	566	601	521	3.0%	-3.0%	11.9%
Total	1551	1587	1645	1660	-2.3%	-5.7%	-6.6%

Calls for Service Summary

Officer Initiated Events (Beat & Hour of Day)

	<u>YTD</u> <u>2025</u>	<u>YTD</u> <u>2024</u>	<u>YTD</u> <u>2020</u>	<u>YTD</u> <u>2015</u>	<u>1 Year</u> <u>Change</u>	<u>5 Year</u> <u>Change</u>	<u>10 Year</u> <u>Change</u>
Location							
Beat 1	6.0%	4.8%	9.7%	28.6%	25.6%	-38.1%	-79.1%
Beat 2	4.6%	5.0%	7.7%	34.8%	-7.6%	-39.8%	-86.7%
Beat 3	10.5%	7.7%	10.1%	33.9%	36.2%	3.9%	-69.1%
Out of Town	0.5%	0.6%	0.7%	2.3%	-11.9%	-29.7%	-76.9%
Hour of Day							
0600	14	24	21	178	-41.7%	-33.3%	-92.1%
0700	65	70	87	420	-7.1%	-25.3%	-84.5%
0800	75	98	111	814	-23.5%	-32.4%	-90.8%
0900	93	102	111	613	-8.8%	-16.2%	-84.8%
1000	77	88	108	504	-12.5%	-28.7%	-84.7%
1100	95	84	80	435	13.1%	18.8%	-78.2%
1200	78	96	70	275	-18.8%	11.4%	-71.6%
1300	67	53	103	281	26.4%	-35.0%	-76.2%
1400	54	73	60	212	-26.0%	-10.0%	-74.5%
1500	49	70	75	181	-30.0%	-34.7%	-72.9%
1600	34	62	122	530	-45.2%	-72.1%	-93.6%
1700	32	59	96	474	-45.8%	-66.7%	-93.2%
Shift 1	733	879	1044	4917	-16.6%	-29.8%	-85.1%
1800	54	68	68	417	-20.6%	-20.6%	-87.1%
1900	86	92	60	377	-6.5%	43.3%	-77.2%
2000	77	65	61	321	18.5%	26.2%	-76.0%
2100	69	74	72	394	-6.8%	-4.2%	-82.5%
2200	68	83	29	263	-18.1%	134.5%	-74.1%
2300	60	79	81	141	-24.1%	-25.9%	-57.4%
0000	46	55	159	642	-16.4%	-71.1%	-92.8%
0100	65	53	107	491	22.6%	-39.3%	-86.8%
0200	34	34	108	465	0.0%	-68.5%	-92.7%
0300	23	24	40	393	-4.2%	-42.5%	-94.1%
0400	17	15	41	284	13.3%	-58.5%	-94.0%
0500	5	14	24	245	-64.3%	-79.2%	-98.0%
Shift 2	604	656	850	4433	-7.9%	-28.9%	-86.4%
Total	1337	1535	1894	9350	-12.9%	-29.4%	-85.7%

Traffic Enforcement Summary

Traffic Stops							
	YTD 2025	YTD 2024	YTD 2020	YTD 2015	1 Yr. Change	5 Yr. Change	10 Yr. Change
Total	NA	NA	NA	NA	0.0%	0.0%	0.0%
Citations							
	YTD 2025	YTD 2024	YTD 2020	YTD 2015	1 Yr. Change	5 Yr. Change	10 Yr. Change
Moving Citation	192	257	235	246	-25.3%	-18.3%	-22.0%
Moving Warning	513	588	508	344	-12.8%	1.0%	49.1%
Total Moving	705	845	743	590	-16.6%	-5.1%	19.5%
Non-Moving Citation	145	174	101	178	-16.7%	43.6%	-18.5%
Non-Moving Warning	339	423	266	245	-19.9%	27.4%	38.4%
Total Non-Moving	484	597	367	423	-18.9%	31.9%	14.4%
Total Warning	852	1011	774	589	-15.7%	10.1%	44.7%
Total Citations	337	431	336	424	-21.8%	0.3%	-20.5%
Total Enforcement Actions	1189	1442	1110	1013	-17.5%	7.1%	17.4%
DUI Arrests							
	YTD 2025	YTD 2024	YTD 2020	YTD 2015	1 Yr. Change	5 Yr. Change	10 Yr. Change
Total	13	13	10	NA	0.0%	30.0%	0.0%
Category							
	YTD 2025	YTD 2024	YTD 2020	YTD 2015	1 Yr. Change	5 Yr. Change	10 Yr. Change
SPEED	378	570	486	297	-33.7%	-22.2%	27.3%
REGISTRATION	260	350	145	183	-25.7%	79.3%	42.1%
STOP SIGN OR SIGNAL	192	128	98	114	50.0%	95.9%	68.4%
EQUIPMENT	106	89	129	107	19.1%	-17.8%	-0.9%
INSURANCE	61	78	38	86	-21.8%	60.5%	-29.1%
LICENSE	49	64	40	38	-23.4%	22.5%	28.9%
LANE	39	60	36	55	-35.0%	8.3%	-29.1%
DISTRACTED	31	42	54	68	-26.2%	-42.6%	-54.4%
TURNING	19	11	13	9	72.7%	46.2%	111.1%
YIELD	18	14	12	12	28.6%	50.0%	50.0%
SIGNAL	17	15	28	29	13.3%	-39.3%	-41.4%
OTHER	11	13	18	6	-15.4%	-38.9%	83.3%
SEAT BELT	4	3	2	7	33.3%	100.0%	-42.9%
ALCOHOL / CANNABIS	4	5	11	2	-20.0%	-63.6%	100.0%

Citizen Concern Summary

<u>Location</u>	<u>Issue</u>	<u>Dates Monitored</u>	<u>Police Response</u>
Farmingdale Drive 75 th Street to 79 th Street	Speeding	1/10/25 - 1/24/25	25 Observations / 534 Minutes 3 Warnings / 0 Citations
71 st Street 400 Block	Speeding	1/30/25 - 2/28/25	20 Observations / 534 Minutes 4 Warnings / 2 Citations
Adams Street 7500 Block	Speeding	3/10/25 - 3/19/25	20 Observations / 457 Minutes 0 Citations / 0 Warnings